



# SZABO SCANDIC

Part of Europa Biosite

## Produktinformation



Forschungsprodukte & Biochemikalien



Zellkultur & Verbrauchsmaterial



Diagnostik & molekulare Diagnostik



Laborgeräte & Service

Weitere Information auf den folgenden Seiten!  
See the following pages for more information!



### Lieferung & Zahlungsart

siehe unsere [Liefer- und Versandbedingungen](#)

### Zuschläge

- Mindermengenzuschlag
- Trockeneiszuschlag
- Gefahrgutzuschlag
- Expressversand

### SZABO-SCANDIC HandelsgmbH

Quellenstraße 110, A-1100 Wien

T. +43(0)1 489 3961-0

F. +43(0)1 489 3961-7

[mail@szabo-scandic.com](mailto:mail@szabo-scandic.com)

[www.szabo-scandic.com](http://www.szabo-scandic.com)

[linkedin.com/company/szaboscandic](https://www.linkedin.com/company/szaboscandic) 

## CAMK2G purified MaxPab rabbit polyclonal antibody (D01P) MaxPab®

Catalog # : H00000818-D01P

規格 : [ 100 ug ]

[List All](#)

### Specification

**Product Description:** Rabbit polyclonal antibody raised against a full-length human CAMK2G protein.

**Immunogen:** CAMK2G (AAH34044.1, 1 a.a. ~ 527 a.a) full-length human protein.

**Sequence:**  
 MATTATCTRFTDDYQLFEELGKGAFSVVRRVCVKTPTQEYAAKIINTKKL  
 SARDHQKLREARICRLLKHPNIVRLHDSISEEGFHYLVFDLVTGGELFED  
 IVAREYYSEADASHCIHQILESVNHHQHDIVHRDLKPENLLLASKCKGAAV  
 KLADFGLAIEVQGEQQAWFGFAGTPGYLSPEVLRKDPYGGKPVDIWACG  
 VILYILLVGYPWFDEQHKLYQQIKAGAYDFPSPEWDTVTPEAKNLINQ  
 MLTINPAKRITADQALKHPWVCQRSTVASMMHRQETVECLRKFNARRKL  
 KGAILTTMLVSRNFSVGRQSSAPASPAASAAGLAGQAASLLNKKSDGG  
 VKKRKSSSSVHLMPEQTTVHNATDGIKGSTESCNTTTEDEDLKVRKQEI  
 IKITEQLIEAINNGDFEAYTKICDPGLTSFEPEALGNLVEGMDFHKFYFENL  
 LSKNSKPIHTTILNPHVHVIGEDAACIAYIRLTQYIDGQGRPRTSQSEETRV  
 WHRRDQKWLNVHYHCSGAPAAPLQ

**Host:** Rabbit

**Reactivity:** Human

**Quality Control Testing:** Antibody reactive against mammalian transfected lysate.

**Storage Buffer:** In 1x PBS, pH 7.4

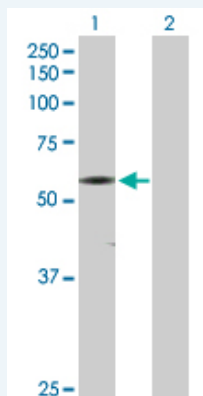
**Storage Instruction:** Store at -20°C or lower. Aliquot to avoid repeated freezing and thawing.

**MSDS:** [Download](#)

**Datasheet:** [Download](#)

### Applications

#### Western Blot (Transfected lysate)

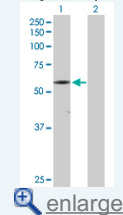


Western Blot analysis of CAMK2G expression in transfected 293T cell line (H00000818-T02) by CAMK2G MaxPab polyclonal antibody.

Lane 1: CAMK2G transfected lysate(59.00 kDa).

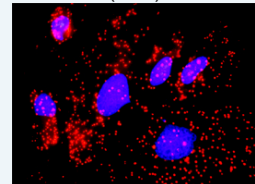
### Application Image

#### Western Blot (Transfected lysate)



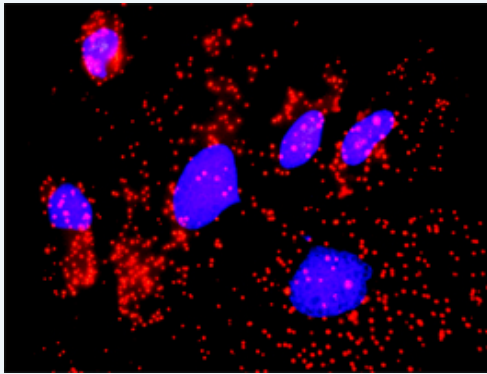
[enlarge](#)

#### In situ Proximity Ligation Assay (Cell)



[enlarge](#)

### *In situ* Proximity Ligation Assay (Cell)



Proximity Ligation Analysis of protein-protein interactions between CAMK2G and FLNA. HeLa cells were stained with anti-CAMK2G rabbit purified polyclonal 1:1200 and anti-FLNA mouse monoclonal antibody 1:50. Each red dot represents the detection of protein-protein interaction complex, and nuclei were counterstained with DAPI (blue).

### Gene Information

Entrez GeneID: [818](#)

GeneBank [BC034044.1](#)  
Accession#:

Protein [AAH34044.1](#)  
Accession#:

Gene Name: CAMK2G

Gene Alias: CAMK,CAMK-II,CAMKG,FLJ16043,MGC26678

Gene Description: calcium/calmodulin-dependent protein kinase II gamma

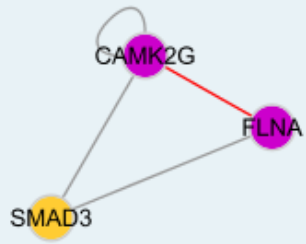
Omim ID: [602123](#)

Gene Ontology: [Hyperlink](#)

**Gene Summary:** The product of this gene belongs to the Serine/Threonine protein kinase family, and to the Ca(2+)/calmodulin-dependent protein kinase subfamily. Calcium signaling is crucial for several aspects of plasticity at glutamatergic synapses. In mammalian cells the enzyme is composed of four different chains: alpha, beta, gamma, and delta. The product of this gene is a gamma chain. Six alternatively spliced variants that encode six different isoforms have been characterized to date. Additional alternative splice variants that encode different isoforms have been described, but their full-length nature has not been determined. [provided by RefSeq]

Other Designations: CaM kinase II,OTTHUMP00000019843,OTTHUMP00000019844,calcium/calmodulin-dependent protein kinase (CaM kinase) II gamma

### Interactome



### Gene Pathway

---

[Calcium signaling pathway](#) [ErbB signaling pathway](#) [Glioma](#) [GnRH signaling pathway](#)  
[Long-term potentiation](#) [Melanogenesis](#) [Neurotrophin signaling pathway](#)  
[Olfactory transduction](#) [Wnt signaling pathway](#)

### Related Disease

---

[Alzheimer Disease](#) [Alzheimer disease](#) [Cardiovascular Diseases](#)  
[Cerebral Amyloid Angiopathy](#) [Diabetes Mellitus, Type 2](#) [Edema](#)  
[Genetic Predisposition to Disease](#) [Neuroblastoma](#)

---

[服務條款](#) | [隱私權政策](#) | [著作及商標](#) | [網站地圖](#)

©2016 亞諾法生技股份有限公司 Abnova Corporation. 版權所有.