



# SZABO SCANDIC

Part of Europa Biosite

## Produktinformation



Forschungsprodukte & Biochemikalien



Zellkultur & Verbrauchsmaterial



Diagnostik & molekulare Diagnostik



Laborgeräte & Service

Weitere Information auf den folgenden Seiten!  
See the following pages for more information!



### Lieferung & Zahlungsart

siehe unsere [Liefer- und Versandbedingungen](#)

### Zuschläge

- Mindermengenzuschlag
- Trockeneiszuschlag
- Gefahrgutzuschlag
- Expressversand

### SZABO-SCANDIC HandelsgmbH

Quellenstraße 110, A-1100 Wien

T. +43(0)1 489 3961-0

F. +43(0)1 489 3961-7

[mail@szabo-scandic.com](mailto:mail@szabo-scandic.com)

[www.szabo-scandic.com](http://www.szabo-scandic.com)

[linkedin.com/company/szaboscandic](https://www.linkedin.com/company/szaboscandic) 

## CAMK2G (Human) IP-WB Antibody Pair

Catalog # : H00000818-PW1

規格 : [ 1 Set ]

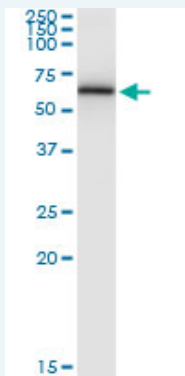
[List All](#)

### Specification

**Product Description:** This IP-WB antibody pair set comes with one antibody for immunoprecipitation and another to detect the precipitated protein in western blot.

**Reactivity:** Human

**Quality Control Testing:** Immunoprecipitation-Western Blot (IP-WB)



Immunoprecipitation of CAMK2G transfected lysate using rabbit polyclonal anti-CAMK2G and Protein A Magnetic Bead ([U0007](#)), and immunoblotted with mouse purified polyclonal anti-CAMK2G.

**Supplied Product:** Antibody pair set content:  
 1. Antibody pair for IP: rabbit polyclonal anti-CAMK2G (300 ul)  
 2. Antibody pair for WB: mouse purified polyclonal anti-CAMK2G (50 ug)

**Storage Instruction:** Store reagents of the antibody pair set at -20°C or lower. Please aliquot to avoid repeated freeze thaw cycle. Reagents should be returned to -20°C storage immediately after use.

**MSDS:**  [Download](#)

### Applications

**Immunoprecipitation-Western Blot**

 [Protocol Download](#)

### Gene Information

**Entrez GeneID:** [818](#)

**Gene Name:** CAMK2G

**Gene Alias:** CAMK,CAMK-II,CAMKG,FLJ16043,MGC26678

**Gene Description:** calcium/calmodulin-dependent protein kinase II gamma

**Omim ID:** [602123](#)

**Gene Ontology:** [Hyperlink](#)

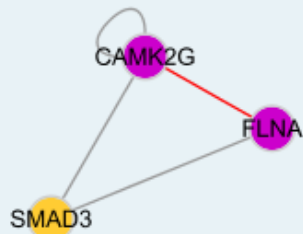
### Application Image

Immunoprecipitation-Western Blot

**Gene Summary:** The product of this gene belongs to the Serine/Threonine protein kinase family, and to the Ca(2+)/calmodulin-dependent protein kinase subfamily. Calcium signaling is crucial for several aspects of plasticity at glutamatergic synapses. In mammalian cells the enzyme is composed of four different chains: alpha, beta, gamma, and delta. The product of this gene is a gamma chain. Six alternatively spliced variants that encode six different isoforms have been characterized to date. Additional alternative splice variants that encode different isoforms have been described, but their full-length nature has not been determined. [provided by RefSeq]

**Other Designations:** CaM kinase II, OTTHUMP00000019843, OTTHUMP00000019844, calcium/calmodulin-dependent protein kinase (CaM kinase) II gamma

### Interactome



### Gene Pathway

[Calcium signaling pathway](#) [ErbB signaling pathway](#) [Glioma](#) [GnRH signaling pathway](#) [Long-term potentiation](#) [Melanogenesis](#) [Neurotrophin signaling pathway](#) [Olfactory transduction](#) [Wnt signaling pathway](#)

### Related Disease

[Alzheimer Disease](#) [Alzheimer disease](#) [Cardiovascular Diseases](#) [Cerebral Amyloid Angiopathy](#) [Diabetes Mellitus, Type 2](#) [Edema](#) [Genetic Predisposition to Disease](#) [Neuroblastoma](#)

[服務條款](#) | [隱私權政策](#) | [著作及商標](#) | [網站地圖](#)

©2016 亞諾法生技股份有限公司 Abnova Corporation. 版權所有.