



# SZABO SCANDIC

Part of Europa Biosite

## Produktinformation



Forschungsprodukte & Biochemikalien



Zellkultur & Verbrauchsmaterial



Diagnostik & molekulare Diagnostik



Laborgeräte & Service

Weitere Information auf den folgenden Seiten!  
See the following pages for more information!



### Lieferung & Zahlungsart

siehe unsere [Liefer- und Versandbedingungen](#)

### Zuschläge

- Mindermengenzuschlag
- Trockeneiszuschlag
- Gefahrgutzuschlag
- Expressversand

### SZABO-SCANDIC HandelsgmbH

Quellenstraße 110, A-1100 Wien

T. +43(0)1 489 3961-0

F. +43(0)1 489 3961-7

[mail@szabo-scandic.com](mailto:mail@szabo-scandic.com)

[www.szabo-scandic.com](http://www.szabo-scandic.com)

[linkedin.com/company/szaboscandic](https://www.linkedin.com/company/szaboscandic) 

## CAMK2G 293T Cell Transient Overexpression Lysate(Denatured)

Catalog # : H00000818-T04

規格 : [ 100 uL ]

[List All](#)

### Specification

**Transfected Cell Line:** 293T

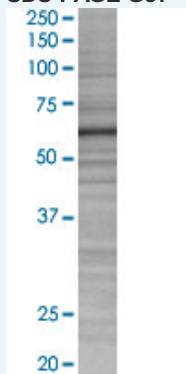
**Plasmid:** pCMV-CAMK2G full-length

**Host:** Human

**Theoretical MW (kDa):** 59

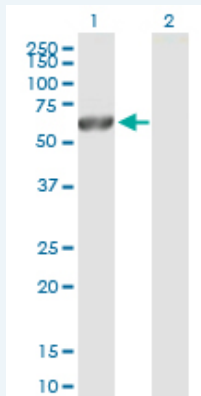
**Quality Control Testing:** Transient overexpression cell lysate was tested with Anti-CAMK2G antibody ([H00000818-B02P](#)) by Western Blots.

#### SDS-PAGE Gel



CAMK2G transfected lysate.

#### Western Blot



Lane 1: CAMK2G transfected lysate ( 59.00 KDa)

Lane 2: Non-transfected lysate.

**Storage Buffer:** 1X Sample Buffer (50 mM Tris-HCl, 2% SDS, 10% glycerol, 300 mM 2-mercaptoethanol, 0.01% Bromophenol blue)

**Storage Instruction:** Store at -80°C. Aliquot to avoid repeated freezing and thawing.

**MSDS:**  [Download](#)

### Applications

## Western Blot

### Gene Information

Entrez GeneID: [818](#)

GeneBank [BC034044.1](#)  
Accession#:

Protein [AAH34044.1](#)  
Accession#:

Gene Name: CAMK2G

Gene Alias: CAMK,CAMK-II,CAMKG,FLJ16043,MGC26678

Gene Description: calcium/calmodulin-dependent protein kinase II gamma

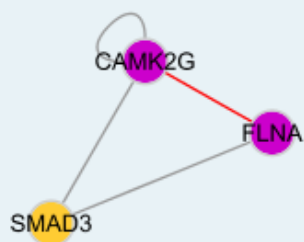
Omim ID: [602123](#)

Gene Ontology: [Hyperlink](#)

**Gene Summary:** The product of this gene belongs to the Serine/Threonine protein kinase family, and to the Ca(2+)/calmodulin-dependent protein kinase subfamily. Calcium signaling is crucial for several aspects of plasticity at glutamatergic synapses. In mammalian cells the enzyme is composed of four different chains: alpha, beta, gamma, and delta. The product of this gene is a gamma chain. Six alternatively spliced variants that encode six different isoforms have been characterized to date. Additional alternative splice variants that encode different isoforms have been described, but their full-length nature has not been determined. [provided by RefSeq]

**Other Designations:** CaM kinase II,OTTHUMP00000019843,OTTHUMP00000019844,calcium/calmodulin-dependent protein kinase (CaM kinase) II gamma

### Interactome



### Gene Pathway

[Calcium signaling pathway](#) [ErbB signaling pathway](#) [Glioma](#) [GnRH signaling pathway](#)  
[Long-term potentiation](#) [Melanogenesis](#) [Neurotrophin signaling pathway](#)

[Olfactory transduction](#) [Wnt signaling pathway](#)

#### **Related Disease**

---

[Alzheimer Disease](#) [Alzheimer disease](#) [Cardiovascular Diseases](#)  
[Cerebral Amyloid Angiopathy](#) [Diabetes Mellitus, Type 2](#) [Edema](#)  
[Genetic Predisposition to Disease](#) [Neuroblastoma](#)

---

[服務條款](#) | [隱私權政策](#) | [著作及商標](#) | [網站地圖](#)

©2016 亞諾法生技股份有限公司 Abnova Corporation. 版權所有.