



SZABO SCANDIC

Part of Europa Biosite

Produktinformation



Forschungsprodukte & Biochemikalien



Zellkultur & Verbrauchsmaterial



Diagnostik & molekulare Diagnostik



Laborgeräte & Service

Weitere Information auf den folgenden Seiten!
See the following pages for more information!



Lieferung & Zahlungsart

siehe unsere [Liefer- und Versandbedingungen](#)

Zuschläge

- Mindermengenzuschlag
- Trockeneiszuschlag
- Gefahrgutzuschlag
- Expressversand

SZABO-SCANDIC HandelsgmbH

Quellenstraße 110, A-1100 Wien

T. +43(0)1 489 3961-0

F. +43(0)1 489 3961-7

mail@szabo-scandic.com

www.szabo-scandic.com

[linkedin.com/company/szaboscandic](https://www.linkedin.com/company/szaboscandic) 

CAMLG polyclonal antibody (A01)

Catalog # : H00000819-A01

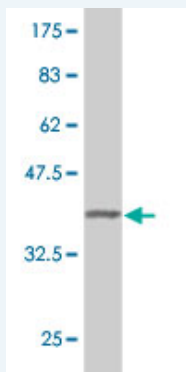
規格 : [50 uL]

List All

Specification

Product Description:	Mouse polyclonal antibody raised against a partial recombinant CAMLG.
Immunogen:	CAMLG (NP_001736, 1 a.a. ~ 100 a.a) partial recombinant protein with GST tag.
Sequence:	MESMAVATDGGGERPGVPAGSGLSASQRRRAELRRRKLMMNSEQRINRIMGFHRPGSGAEEESQTKSKQQDSDLNLSVPSVSKRWVLGDSVSTGTTDQQG
Host:	Mouse
Reactivity:	Human

Quality Control Testing: Antibody Reactive Against Recombinant Protein.



Western Blot detection against Immunogen (37.11 kDa) .

Storage Buffer: 50 % glycerol

Storage Instruction: Store at -20°C or lower. Aliquot to avoid repeated freezing and thawing.

MSDS: [Download](#)

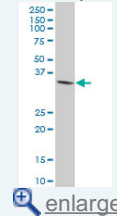
Datasheet: [Download](#)

Applications

Western Blot (Cell lysate)

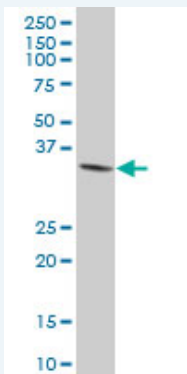
Application Image

Western Blot (Cell lysate)



Western Blot (Recombinant protein)

ELISA



CAMLG polyclonal antibody (A01), Lot # 060717JCS1 Western Blot analysis of CAMLG expression in 293 (Cat # L026V1).

 [Protocol Download](#)

Western Blot (Recombinant protein)

 [Protocol Download](#)

ELISA

Gene Information

Entrez GeneID: [819](#)

GeneBank Accession#: [NM_001745](#)

Protein Accession#: [NP_001736](#)

Gene Name: CAMLG

Gene Alias: CAML,MGC163197

Gene Description: calcium modulating ligand

Omim ID: [601118](#)

Gene Ontology: [Hyperlink](#)

Gene Summary: The immunosuppressant drug cyclosporin A blocks a calcium-dependent signal from the T-cell receptor (TCR) that normally leads to T-cell activation. When bound to cyclophilin B, cyclosporin A binds and inactivates the key signaling intermediate calcineurin. The protein encoded by this gene functions similarly to cyclosporin A, binding to cyclophilin B and acting downstream of the TCR and upstream of calcineurin by causing an influx of calcium. This integral membrane protein appears to be a new participant in the calcium signal transduction pathway, implicating cyclophilin B in calcium signaling, even in the absence of cyclosporin. [provided by RefSeq]

Other Designations: calcium-modulating cyclophilin ligand,calcium-signal modulating cyclophilin ligand,cyclophilin B-binding protein

Related Disease

[Coronary Artery Disease Genetic Predisposition to Disease](#)