



SZABO SCANDIC

Part of Europa Biosite

Produktinformation



Forschungsprodukte & Biochemikalien



Zellkultur & Verbrauchsmaterial



Diagnostik & molekulare Diagnostik



Laborgeräte & Service

Weitere Information auf den folgenden Seiten!
See the following pages for more information!



Lieferung & Zahlungsart

siehe unsere [Liefer- und Versandbedingungen](#)

Zuschläge

- Mindermengenzuschlag
- Trockeneiszuschlag
- Gefahrgutzuschlag
- Expressversand

SZABO-SCANDIC HandelsgmbH

Quellenstraße 110, A-1100 Wien

T. +43(0)1 489 3961-0

F. +43(0)1 489 3961-7

mail@szabo-scandic.com

www.szabo-scandic.com

[linkedin.com/company/szaboscandic](https://www.linkedin.com/company/szaboscandic) 

CAMLG purified MaxPab mouse polyclonal antibody (B01P) MaxPab®

Catalog # : H00000819-B01P

規格 : [50 ug]

[List All](#)

Specification

Product Description: Mouse polyclonal antibody raised against a full-length human CAMLG protein.

Immunogen: CAMLG (NP_001736.1, 1 a.a. ~ 296 a.a) full-length human protein.

Sequence:
 MESMAVATDGGERPAGSGLSASQRRRAELRRRKLMMNSEQRINRIM
 GFHRPGSGAEEESQTKSKQQSDKLNLSVPSVSKRVVLGDSVSTGTT
 DQQGGVAEVKGTQLGDKLDSFIKPPCCSSDVNLELRQRNRGDLTADSV
 QRGSRHGLEYLSRFEEAMKLRKQLISEKPSQEDGNTTEEFDSFRIFRL
 VGCALLALGVRAFVCKYLSIFAPFLTQLAYMGLYKYFPKSEKKIKTTVLT
 AALLSGIPAEVINRSMPTYSKMGEVFTDLCVYFFTFIFCHELLDYWGSE
 VP

Host: Mouse

Reactivity: Human, Rat

Quality Control Testing: Antibody reactive against mammalian transfected lysate.

Storage Buffer: In 1x PBS, pH 7.4

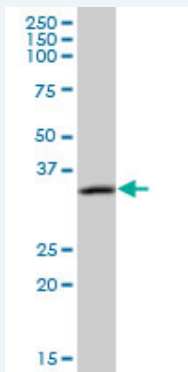
Storage Instruction: Store at -20°C or lower. Aliquot to avoid repeated freezing and thawing.

MSDS: [Download](#)

Datasheet: [Download](#)

Applications

Western Blot (Tissue lysate)



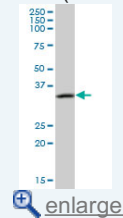
CAMLG MaxPab polyclonal antibody. Western Blot analysis of CAMLG expression in rat brain.

[Protocol Download](#)

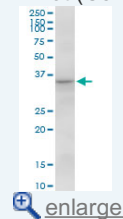
Western Blot (Cell lysate)

Application Image

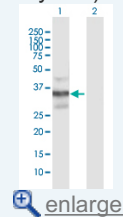
Western Blot (Tissue lysate)

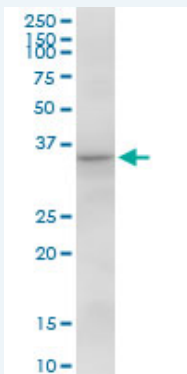


Western Blot (Cell lysate)



Western Blot (Transfected lysate)

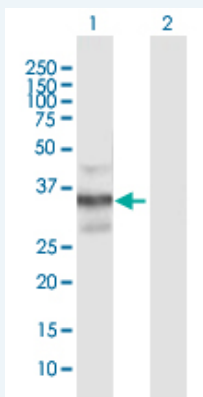




CAMLG MaxPab polyclonal antibody. Western Blot analysis of CAMLG expression in A-431.

 [Protocol Download](#)

Western Blot (Transfected lysate)



Western Blot analysis of CAMLG expression in transfected 293T cell line ([H00000819-T01](#)) by CAMLG MaxPab polyclonal antibody.

Lane 1: CAMLG transfected lysate(32.56 KDa).

Lane 2: Non-transfected lysate.

 [Protocol Download](#)

Gene Information

Entrez GeneID: [819](#)

GeneBank [NM_001745.2](#)

Accession#:

Protein [NP_001736.1](#)

Accession#:

Gene Name: CAMLG

Gene Alias: CAML,MGC163197

Gene Description: calcium modulating ligand

Omim ID: [601118](#)

Gene Ontology: [Hyperlink](#)

Gene Summary: The immunosuppressant drug cyclosporin A blocks a calcium-dependent signal from the T-cell receptor (TCR) that normally leads to T-cell activation. When bound to cyclophilin B, cyclosporin A binds and inactivates the key signaling intermediate calcineurin. The protein encoded by this gene functions similarly to cyclosporin A, binding to cyclophilin B and acting downstream of the TCR and upstream of calcineurin by causing an influx of calcium. This integral membrane protein appears to be a new participant in the calcium signal transduction pathway, implicating cyclophilin B in calcium signaling,

even in the absence of cyclosporin. [provided by RefSeq]

Other calcium-modulating cyclophilin ligand,calcium-signal modulating
Designations: cyclophilin ligand,cyclophilin B-binding protein

Related Disease

[Coronary Artery Disease](#) [Genetic Predisposition to Disease](#)

[服務條款](#) | [隱私權政策](#) | [著作及商標](#) | [網站地圖](#)

©2016 亞諾法生技股份有限公司 Abnova Corporation. 版權所有.