



SZABO SCANDIC

Part of Europa Biosite

Produktinformation



Forschungsprodukte & Biochemikalien



Zellkultur & Verbrauchsmaterial



Diagnostik & molekulare Diagnostik



Laborgeräte & Service

Weitere Information auf den folgenden Seiten!
See the following pages for more information!



Lieferung & Zahlungsart

siehe unsere [Liefer- und Versandbedingungen](#)

Zuschläge

- Mindermengenzuschlag
- Trockeneiszuschlag
- Gefahrgutzuschlag
- Expressversand

SZABO-SCANDIC HandelsgmbH

Quellenstraße 110, A-1100 Wien

T. +43(0)1 489 3961-0

F. +43(0)1 489 3961-7

mail@szabo-scandic.com

www.szabo-scandic.com

[linkedin.com/company/szaboscandic](https://www.linkedin.com/company/szaboscandic) 

CAMLG purified MaxPab rabbit polyclonal antibody (D01P) MaxPab®

Catalog # : H00000819-D01P

規格 : [100 ug]

[List All](#)

Specification

Product Description: Rabbit polyclonal antibody raised against a full-length human CAMLG protein.

Immunogen: CAMLG (NP_001736.1, 1 a.a. ~ 296 a.a) full-length human protein.

Sequence:
 MESMAVATDGGERPAGSGLSASQRRRAELRRRKL MNSEQRINRIM
 GFHRPGSGAEEESQTKSKQQSDKLNLSVPSVSKRVVLGDSVSTGTT
 DQQGGVAEVKGTQLGDKLDSFIKPPCCSSDVNLELRQRNRGDLTADSV
 QRGSRHGLEQYLSRFEEAMKLRKQLISEKPSQEDGNTTEEFDSFRIFRL
 VGCALLALGVRAFVCKYLSIFAPFLTLQLAYMGLYKYFPKSEKIKTTVLT
 AALLSGIPAEVINRSMPTYSKMGEVFTDLCVYFFTFIFCHELLDYWGSE
 VP

Host: Rabbit

Reactivity: Human

Quality Control Testing: Antibody reactive against mammalian transfected lysate.

Storage Buffer: In 1x PBS, pH 7.4

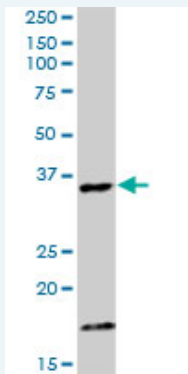
Storage Instruction: Store at -20°C or lower. Aliquot to avoid repeated freezing and thawing.

MSDS: [Download](#)

Datasheet: [Download](#)

Applications

Western Blot (Tissue lysate)



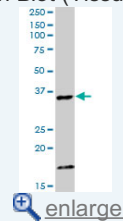
CAMLG MaxPab rabbit polyclonal antibody. Western Blot analysis of CAMLG expression in human spleen.

[Protocol Download](#)

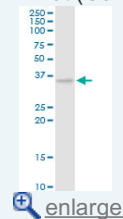
Western Blot (Cell lysate)

Application Image

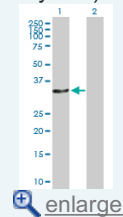
Western Blot (Tissue lysate)

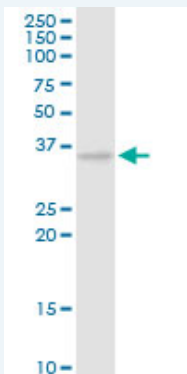


Western Blot (Cell lysate)



Western Blot (Transfected lysate)

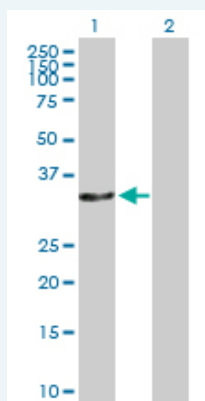




CAMLG MaxPab rabbit polyclonal antibody. Western Blot analysis of CAMLG expression in HepG2.

 [Protocol Download](#)


Western Blot (Transfected lysate)



Western Blot analysis of CAMLG expression in transfected 293T cell line ([H00000819-T01](#)) by CAMLG MaxPab polyclonal antibody.

Lane 1: CAMLG transfected lysate(33.00 KDa).

Lane 2: Non-transfected lysate.

 [Protocol Download](#)

Gene Information

Entrez GeneID: [819](#)

GeneBank [NM_001745.2](#)

Accession#:

Protein [NP_001736.1](#)

Accession#:

Gene Name: CAMLG

Gene Alias: CAML,MGC163197

Gene calcium modulating ligand

Description:

Omim ID: [601118](#)

Gene Ontology: [Hyperlink](#)

Gene Summary: The immunosuppressant drug cyclosporin A blocks a calcium-dependent signal from the T-cell receptor (TCR) that normally leads to T-cell activation. When bound to cyclophilin B, cyclosporin A binds and inactivates the key signaling intermediate calcineurin. The protein encoded by this gene functions similarly to cyclosporin A, binding to cyclophilin B and acting downstream of the TCR and upstream of calcineurin by causing an influx of calcium. This integral membrane protein appears to be a new participant in the calcium signal

transduction pathway, implicating cyclophilin B in calcium signaling, even in the absence of cyclosporin. [provided by RefSeq]

Other Designations: calcium-modulating cyclophilin ligand,calcium-signal modulating cyclophilin ligand,cyclophilin B-binding protein

Related Disease

[Coronary Artery Disease](#) [Genetic Predisposition to Disease](#)

[服務條款](#) | [隱私權政策](#) | [著作及商標](#) | [網站地圖](#)

©2016 亞諾法生技股份有限公司 Abnova Corporation. 版權所有.