



SZABO SCANDIC

Part of Europa Biosite

Produktinformation



Forschungsprodukte & Biochemikalien



Zellkultur & Verbrauchsmaterial



Diagnostik & molekulare Diagnostik



Laborgeräte & Service

Weitere Information auf den folgenden Seiten!
See the following pages for more information!



Lieferung & Zahlungsart

siehe unsere [Liefer- und Versandbedingungen](#)

Zuschläge

- Mindermengenzuschlag
- Trockeneiszuschlag
- Gefahrgutzuschlag
- Expressversand

SZABO-SCANDIC HandelsgmbH

Quellenstraße 110, A-1100 Wien

T. +43(0)1 489 3961-0

F. +43(0)1 489 3961-7

mail@szabo-scandic.com

www.szabo-scandic.com

[linkedin.com/company/szaboscandic](https://www.linkedin.com/company/szaboscandic) 

CAMLG 293T Cell Transient Overexpression Lysate(Denatured)

Catalog # : H00000819-T01

規格 : [100 uL]

List All

Specification

Transfected Cell Line: 293T

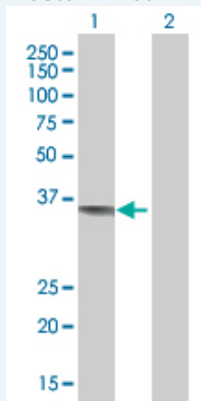
Plasmid: pCMV-CAMLG full-length

Host: Human

Theoretical MW (kDa): 33

Quality Control Testing: Transient overexpression cell lysate was tested with Anti-CAMLG antibody ([H00000819-B01](#)) by Western Blots.

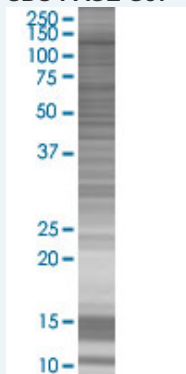
Western Blot



Lane 1: CAMLG transfected lysate (33 KDa)

Lane 2: Non-transfected lysate.

SDS-PAGE Gel



CAMLG transfected lysate.

Storage Buffer: 1X Sample Buffer (50 mM Tris-HCl, 2% SDS, 10% glycerol, 300 mM 2-mercaptoethanol, 0.01% Bromophenol blue)

Storage Instruction: Store at -80°C. Aliquot to avoid repeated freezing and thawing.

MSDS:  [Download](#)

Applications

Application Image

Western Blot

Western Blot

Gene Information

Entrez GeneID: [819](#)

GeneBank Accession#: [NM_001745.2](#)

Protein Accession#: -

Gene Name: CAMLG

Gene Alias: CAML,MGC163197

Gene Description: calcium modulating ligand

Omim ID: [601118](#)

Gene Ontology: [Hyperlink](#)

Gene Summary: The immunosuppressant drug cyclosporin A blocks a calcium-dependent signal from the T-cell receptor (TCR) that normally leads to T-cell activation. When bound to cyclophilin B, cyclosporin A binds and inactivates the key signaling intermediate calcineurin. The protein encoded by this gene functions similarly to cyclosporin A, binding to cyclophilin B and acting downstream of the TCR and upstream of calcineurin by causing an influx of calcium. This integral membrane protein appears to be a new participant in the calcium signal transduction pathway, implicating cyclophilin B in calcium signaling, even in the absence of cyclosporin. [provided by RefSeq]

Other Designations: calcium-modulating cyclophilin ligand,calcium-signal modulating cyclophilin ligand,cyclophilin B-binding protein

Related Disease

[Coronary Artery Disease](#) [Genetic Predisposition to Disease](#)