



SZABO SCANDIC

Part of Europa Biosite

Produktinformation



Forschungsprodukte & Biochemikalien



Zellkultur & Verbrauchsmaterial



Diagnostik & molekulare Diagnostik



Laborgeräte & Service

Weitere Information auf den folgenden Seiten!
See the following pages for more information!



Lieferung & Zahlungsart

siehe unsere [Liefer- und Versandbedingungen](#)

Zuschläge

- Mindermengenzuschlag
- Trockeneiszuschlag
- Gefahrgutzuschlag
- Expressversand

SZABO-SCANDIC HandelsgmbH

Quellenstraße 110, A-1100 Wien

T. +43(0)1 489 3961-0

F. +43(0)1 489 3961-7

mail@szabo-scandic.com

www.szabo-scandic.com

[linkedin.com/company/szaboscandic](https://www.linkedin.com/company/szaboscandic) 



CAMP purified MaxPab mouse polyclonal antibody (B02P) MaxPab®

Catalog # : H00000820-B02P

規格 : [50 ug]

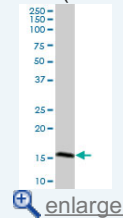
[List All](#)

Specification

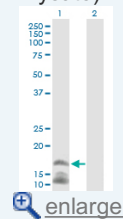
Product Description:	Mouse polyclonal antibody raised against a full-length human CAMP protein.
Immunogen:	CAMP (NP_004336.2, 1 a.a. ~ 170 a.a) full-length human protein.
Sequence:	MKTQRDGHSLGRWSLVLLLLGLVMPLAIIAQLVLSYKEAVLRAIDGINQRSS DANLYRLLDLDPRPTMDGDPDTPKPVSTVKETVCPRTTQQSPEDCDF KKDGLVKRCMGTVTLNQARGSFDISCDKDNKRFALLGDFFRKSKEKIGK EFKRIVQRIKDFLRNLVPRTES
Host:	Mouse
Reactivity:	Human
Quality Control Testing:	Antibody reactive against mammalian transfected lysate.
Storage Buffer:	In 1x PBS, pH 7.4
Storage Instruction:	Store at -20°C or lower. Aliquot to avoid repeated freezing and thawing.
MSDS:	 Download
Datasheet:	 Download

Application Image

Western Blot (Tissue lysate)

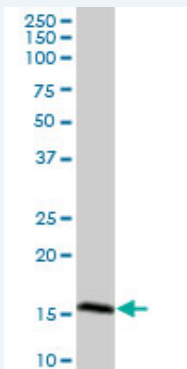


Western Blot (Transfected lysate)



Applications

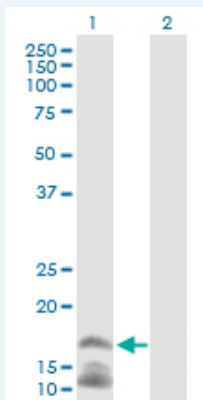
Western Blot (Tissue lysate)



CAMP MaxPab polyclonal antibody. Western Blot analysis of CAMP expression in human spleen.

 [Protocol Download](#)

Western Blot (Transfected lysate)



Western Blot analysis of CAMP expression in transfected 293T cell line ([H00000820-T02](#)) by CAMP MaxPab polyclonal antibody.

Lane 1: CAMP transfected lysate(18.7 KDa).
Lane 2: Non-transfected lysate.

 [Protocol Download](#)

Gene Information

Entrez GeneID: [820](#)

GeneBank Accession#: [NM_004345.3](#)

Protein Accession#: [NP_004336.2](#)

Gene Name: CAMP

Gene Alias: CAP18,CRAMP,FALL-39,FALL39,HSD26,LL37

Gene Description: cathelicidin antimicrobial peptide

Omim ID: [600474](#)

Gene Ontology: [Hyperlink](#)

Gene Summary: Cathelicidin antimicrobial protein is an antimicrobial protein found in specific granules of polymorphonuclear leukocytes (PMNs).[supplied by OMIM]

Other Designations: -