



SZABO SCANDIC

Part of Europa Biosite

Produktinformation



Forschungsprodukte & Biochemikalien



Zellkultur & Verbrauchsmaterial



Diagnostik & molekulare Diagnostik



Laborgeräte & Service

Weitere Information auf den folgenden Seiten!
See the following pages for more information!



Lieferung & Zahlungsart

siehe unsere [Liefer- und Versandbedingungen](#)

Zuschläge

- Mindermengenzuschlag
- Trockeneiszuschlag
- Gefahrgutzuschlag
- Expressversand

SZABO-SCANDIC HandelsgmbH

Quellenstraße 110, A-1100 Wien

T. +43(0)1 489 3961-0

F. +43(0)1 489 3961-7

mail@szabo-scandic.com

www.szabo-scandic.com

[linkedin.com/company/szaboscandic](https://www.linkedin.com/company/szaboscandic) 

CAPG monoclonal antibody (M01), clone 1F1

Catalog # : H00000822-M01

規格 : [100 ug]

[List All](#)

Specification

Product Description: Mouse monoclonal antibody raised against a full length recombinant CAPG.

Immunogen: CAPG (AAH00728.1, 1 a.a. ~ 348 a.a) full-length recombinant protein with GST tag. MW of the GST tag alone is 26 KDa.

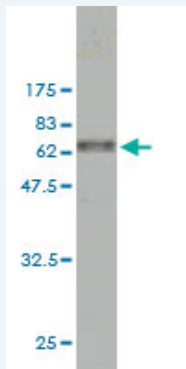
Sequence: MYTAIPQSGSPFPGSVQDPGLHVVWRVEKLPVPVAQENQGVFFSGDSY LVLHNGPEEVSHLHLWIGQQSSRDEQGACAVLAVHLNTLLGERPVQHRE VQGNESDLFMSYFPRGLKYQEGGVESAFHKTSTGAPAAIKKLYQVKGKK NIRATERALNWDSFNTGDCFILDLGNIFAWCGGKSNILERNKARDLALAI RDSERQGKAQVEIVTDGEEPAEMIQVLGPKPALKEGNPEEDLTADKANA QAAALYKVS DATGQMNLTKVADSSPFALELLISDDCFVLDNGLCGKIYW KGRKANERKAALQVAEGFISRMQYAPNTQVEILPQGRESPIFKQFFK DWK

Host: Mouse

Reactivity: Human

Isotype: IgG1 kappa

Quality Control Testing: Antibody Reactive Against Recombinant Protein.



Western Blot detection against Immunogen (63.8 KDa) .

Storage Buffer: In 1x PBS, pH 7.4

Storage Instruction: Store at -20°C or lower. Aliquot to avoid repeated freezing and thawing.

MSDS: [Download](#)

Datasheet: [Download](#)

Applications

Western Blot (Cell lysate)

Application Image

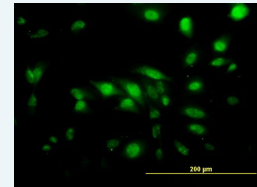
Western Blot (Cell lysate)



[enlarge](#)

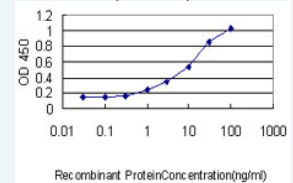
Western Blot (Recombinant protein)

Immunofluorescence



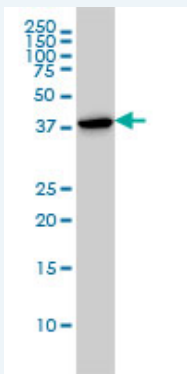
[enlarge](#)

Sandwich ELISA (Recombinant protein)



[enlarge](#)

ELISA



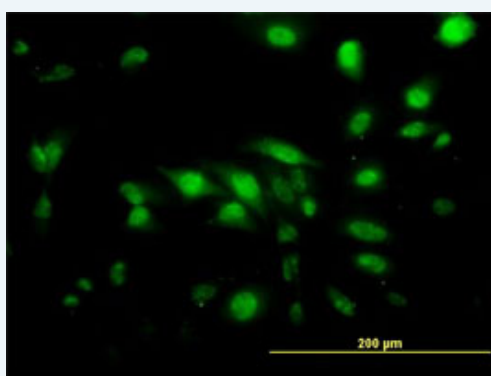
CAPG monoclonal antibody (M01), clone 1F1 Western Blot analysis of CAPG expression in HL-60 (Cat # L014V1).

[Protocol Download](#)

Western Blot (Recombinant protein)

[Protocol Download](#)

Immunofluorescence

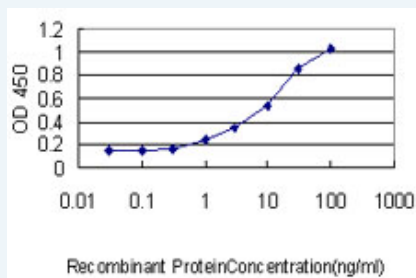


[enlarge this image](#)

Immunofluorescence of monoclonal antibody to CAPG on HeLa cell. [antibody concentration 10 ug/ml]

[Protocol Download](#)

Sandwich ELISA (Recombinant protein)



Detection limit for recombinant GST tagged CAPG is approximately 0.1ng/ml as a capture antibody.

[Protocol Download](#)

ELISA

Gene Information

Entrez GeneID: [822](#)

GeneBank [BC000728](#)

Accession#:

Protein [AAH00728.1](#)

Accession#:

Gene Name: CAPG

Gene Alias: AFCP,MCP

Gene Description: capping protein (actin filament), gelsolin-like

Omim ID: [153615](#)

Gene Ontology: [Hyperlink](#)

Gene Summary: This gene encodes a member of the gelsolin/villin family of actin-regulatory proteins. The encoded protein reversibly blocks the barbed ends of F-actin filaments in a Ca²⁺ and phosphoinositide-regulated manner, but does not sever preformed actin filaments. By capping the barbed ends of actin filaments, the encoded protein contributes to the control of actin-based motility in non-muscle cells. Alternatively spliced transcript variants have been observed, but have not been fully described. [provided by RefSeq]

Other Designations: actin-regulatory protein CAP-G,gelsolin-like capping protein,macrophage capping protein

Related Disease

[Atherosclerosis Carotid Artery Diseases Disease Progression](#)
[Genetic Predisposition to Disease Hyperlipoproteinemia Type II](#)

[服務條款](#) | [隱私權政策](#) | [著作及商標](#) | [網站地圖](#)

©2016 亞諾法生技股份有限公司 Abnova Corporation. 版權所有.