



# SZABO SCANDIC

Part of Europa Biosite

## Produktinformation



Forschungsprodukte & Biochemikalien



Zellkultur & Verbrauchsmaterial



Diagnostik & molekulare Diagnostik



Laborgeräte & Service

Weitere Information auf den folgenden Seiten!  
See the following pages for more information!



### Lieferung & Zahlungsart

siehe unsere [Liefer- und Versandbedingungen](#)

### Zuschläge

- Mindermengenzuschlag
- Trockeneiszuschlag
- Gefahrgutzuschlag
- Expressversand

### SZABO-SCANDIC HandelsgmbH

Quellenstraße 110, A-1100 Wien

T. +43(0)1 489 3961-0

F. +43(0)1 489 3961-7

[mail@szabo-scandic.com](mailto:mail@szabo-scandic.com)

[www.szabo-scandic.com](http://www.szabo-scandic.com)

[linkedin.com/company/szaboscandic](https://www.linkedin.com/company/szaboscandic) 

## CAPG monoclonal antibody (M02), clone 6D6

Catalog # : H00000822-M02

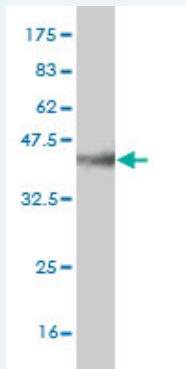
規格 : [ 100 ug ]

[List All](#)

### Specification

<b>Product Description:</b>	Mouse monoclonal antibody raised against a partial recombinant CAPG.
<b>Immunogen:</b>	CAPG (NP_001738, 249 a.a. ~ 348 a.a) partial recombinant protein with GST tag. MW of the GST tag alone is 26 KDa.
<b>Sequence:</b>	AALYKVS DATGQMNLTKVADSSPFALELLISDDCFVLDNGLCGKIYWKG RKANEKERQAALQVAEGFISRMQYAPNTQVEILPQGHESPIFKQFFKDW K
<b>Host:</b>	Mouse
<b>Reactivity:</b>	Human
<b>Isotype:</b>	IgG2a Kappa

**Quality Control Testing:** Antibody Reactive Against Recombinant Protein.



Western Blot detection against Immunogen (36.74 KDa) .

**Storage Buffer:** In 1x PBS, pH 7.4

**Storage Instruction:** Store at -20°C or lower. Aliquot to avoid repeated freezing and thawing.

**MSDS:** [Download](#)

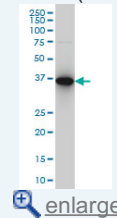
**Datasheet:** [Download](#)

### Applications

Western Blot (Cell lysate)

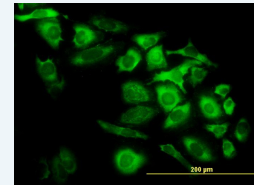
### Application Image

Western Blot (Cell lysate)

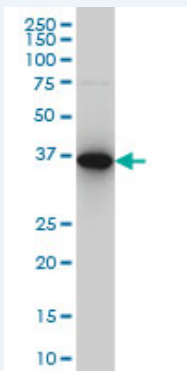


Western Blot (Recombinant protein)

Immunofluorescence



Sandwich ELISA (Recombinant protein)  
ELISA



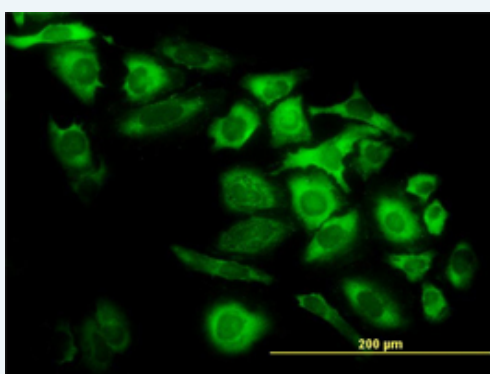
CAPG monoclonal antibody (M02), clone 6D6 Western Blot analysis of CAPG expression in HeLa S3 NE ( Cat # L013V3 ).

[Protocol Download](#)

#### Western Blot (Recombinant protein)

[Protocol Download](#)

#### Immunofluorescence



[enlarge this image](#)

Immunofluorescence of monoclonal antibody to CAPG on HeLa cell. [antibody concentration 30 ug/ml]

[Protocol Download](#)

#### Sandwich ELISA (Recombinant protein)

Detection limit for recombinant GST tagged CAPG is approximately 3ng/ml as a capture antibody.

[Protocol Download](#)

#### ELISA

#### Gene Information

Entrez GeneID: [822](#)

GeneBank [NM\\_001747](#)

Accession#:

Protein [NP\\_001738](#)

Accession#:

Gene Name: CAPG

Gene Alias: AFCP,MCP

Gene Description: capping protein (actin filament), gelsolin-like

Omim ID: [153615](#)

Gene Ontology: [Hyperlink](#)

Gene Summary: This gene encodes a member of the gelsolin/villin family of actin-

regulatory proteins. The encoded protein reversibly blocks the barbed ends of F-actin filaments in a Ca<sup>2+</sup> and phosphoinositide-regulated manner, but does not sever preformed actin filaments. By capping the barbed ends of actin filaments, the encoded protein contributes to the control of actin-based motility in non-muscle cells. Alternatively spliced transcript variants have been observed, but have not been fully described. [provided by RefSeq]

---

**Other** actin-regulatory protein CAP-G, gelsolin-like capping  
**Designations:** protein, macrophage capping protein

---

#### **Related Disease**

---

[Atherosclerosis](#) [Carotid Artery Diseases](#) [Disease Progression](#)  
[Genetic Predisposition to Disease](#) [Hyperlipoproteinemia Type II](#)

---

[服務條款](#) | [隱私權政策](#) | [著作及商標](#) | [網站地圖](#)

©2016 亞諾法生技股份有限公司 Abnova Corporation. 版權所有.