



# SZABO SCANDIC

Part of Europa Biosite

## Produktinformation



Forschungsprodukte & Biochemikalien



Zellkultur & Verbrauchsmaterial



Diagnostik & molekulare Diagnostik



Laborgeräte & Service

Weitere Information auf den folgenden Seiten!  
See the following pages for more information!



### Lieferung & Zahlungsart

siehe unsere [Liefer- und Versandbedingungen](#)

### Zuschläge

- Mindermengenzuschlag
- Trockeneiszuschlag
- Gefahrgutzuschlag
- Expressversand

### SZABO-SCANDIC HandelsgmbH

Quellenstraße 110, A-1100 Wien

T. +43(0)1 489 3961-0

F. +43(0)1 489 3961-7

[mail@szabo-scandic.com](mailto:mail@szabo-scandic.com)

[www.szabo-scandic.com](http://www.szabo-scandic.com)

[linkedin.com/company/szaboscandic](https://www.linkedin.com/company/szaboscandic) 

## CAPN1 293T Cell Transient Overexpression Lysate(Denatured)

Catalog # : H00000823-T02

規格 : [ 100 uL ]

[List All](#)

### Specification

**Transfected Cell Line:** 293T

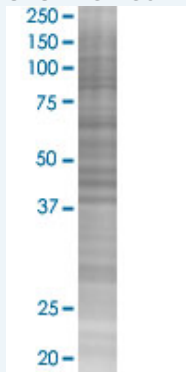
**Plasmid:** pCMV-CAPN1 full-length

**Host:** Human

**Theoretical MW (kDa):** 81.9

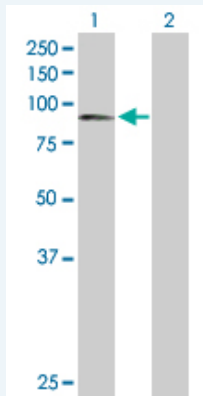
**Quality Control Testing:** Transient overexpression cell lysate was tested with Anti-CAPN1 antibody ([H00000823-D01P](#)) by Western Blots.

#### SDS-PAGE Gel



CAPN1 transfected lysate.

#### Western Blot



Lane 1: CAPN1 transfected lysate ( 81.90 KDa)

Lane 2: Non-transfected lysate.

**Storage Buffer:** 1X Sample Buffer (50 mM Tris-HCl, 2% SDS, 10% glycerol, 300 mM 2-mercaptoethanol, 0.01% Bromophenol blue)

**Storage Instruction:** Store at -80°C. Aliquot to avoid repeated freezing and thawing.

**MSDS:**  [Download](#)

### Applications

## Western Blot

### Gene Information

Entrez GeneID: [823](#)

GeneBank [NM\\_005186](#)  
Accession#:

Protein [NP\\_005177.2](#)  
Accession#:

Gene Name: CAPN1

Gene Alias: CANP,CANP1,CANPL1,muCANP,muCL

Gene Description: calpain 1, (mu/l) large subunit

Omim ID: [114220](#)

Gene Ontology: [Hyperlink](#)

**Gene Summary:** The calpains, calcium-activated neutral proteases, are nonlysosomal, intracellular cysteine proteases. The mammalian calpains include ubiquitous, stomach-specific, and muscle-specific proteins. The ubiquitous enzymes consist of heterodimers with distinct large, catalytic subunits associated with a common small, regulatory subunit. This gene encodes the large subunit of the ubiquitous enzyme, calpain 1. [provided by RefSeq]

**Other Designations:** calcium-activated neutral proteinase,calpain 1, large subunit,calpain, large polypeptide L1,cell proliferation-inducing protein 30

### Interactome



### Gene Pathway

[Alzheimer's disease Apoptosis](#)

