



# SZABO SCANDIC

Part of Europa Biosite

## Produktinformation



Forschungsprodukte & Biochemikalien



Zellkultur & Verbrauchsmaterial



Diagnostik & molekulare Diagnostik



Laborgeräte & Service

Weitere Information auf den folgenden Seiten!  
See the following pages for more information!



### Lieferung & Zahlungsart

siehe unsere [Liefer- und Versandbedingungen](#)

### Zuschläge

- Mindermengenzuschlag
- Trockeneiszuschlag
- Gefahrgutzuschlag
- Expressversand

### SZABO-SCANDIC HandelsgmbH

Quellenstraße 110, A-1100 Wien

T. +43(0)1 489 3961-0

F. +43(0)1 489 3961-7

[mail@szabo-scandic.com](mailto:mail@szabo-scandic.com)

[www.szabo-scandic.com](http://www.szabo-scandic.com)

[linkedin.com/company/szaboscandic](https://www.linkedin.com/company/szaboscandic) 

# CAST MaxPab mouse polyclonal antibody (B02) MaxPab®

Catalog # : H00000831-B02

規格 : [ 50 uL ]

[List All](#)

## Specification

**Product Description:** Mouse polyclonal antibody raised against a full-length human CAST protein.

**Immunogen:** CAST (NP\_775083.1, 1 a.a. ~ 686 a.a) full-length human protein.

**Sequence:**  
 MNPTETKAVKTEPEKKSQSTKLSVVEKKSQEGKPKHEHTEPKSLPKQAS  
 DTGSNDAHNNKAVSRSAEQQPSEKSTEPKTKPQDMISAGGESVAGITAIS  
 GKPGDKKKEKSLTPAVPVESKPKPSGKSGMDAALDDLIDTLGGPEET  
 EEENTTYTGPEVSDPMSSTYIEELGKREVTIPPKYRELLAKKEGITGPPAD  
 SSKPIGPDDAIDALSSDFTCGSPTAAGKKTEKEESTEVLKAQSAGTVRSA  
 APPQEKKRKEKEDTMSDQALEALSASLGTRQAEPELDLRSIKEVDEAKA  
 KEEKLEKCGEDDETIPSEYRLKPATDKDGGKPLLPEPEEKPKPRSESELIDE  
 LSEDFDRSECKEKPSKPTTEESKAAAPAPVSEAVCRTSMCSIQSAPPE  
 PATLKGTVPDDAVEALADSLGKKEADPEDGKPVMDKVKEKAKEEDREKL  
 GEKEETIPPDYRLEEVDKDKGKPLLPKESKEQLPPMSEDFLLDALSEDFS  
 GPQNASSLKFEDAKLAAAISEVVSQTPASTTQAGAPPRDTSQSDKDLDD  
 ALDKLSDSLGQRQDPDENKPMEDKVKEKAKAEHRDKLGERDDTIPPEY  
 RHLLDDNGQDKPVKPTTKKSEDSKKPADDQDPIDALSGDLDSCPSTTET  
 SQNTAKDKCKKAASSSKAPKNGGKAKDSAKTTEETSKPKDD

**Host:** Mouse

**Reactivity:** Human

**Quality Control Testing:** Antibody reactive against mammalian transfected lysate.

**Storage Buffer:** No additive

**Storage Instruction:** Store at -20°C or lower. Aliquot to avoid repeated freezing and thawing.

**Note:** For IHC and IF applications, antibody purification with Protein A will be needed prior to use.

**MSDS:** [Download](#)

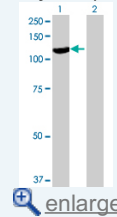
**Datasheet:** [Download](#)

## Applications

**Western Blot (Transfected lysate)**

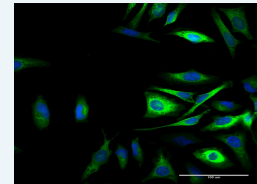
## Application Image

Western Blot (Transfected lysate)

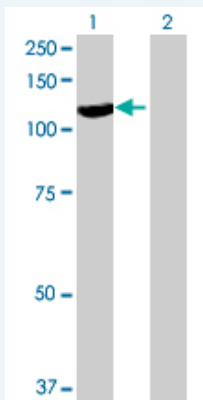


[enlarge](#)

Immunofluorescence



[enlarge](#)

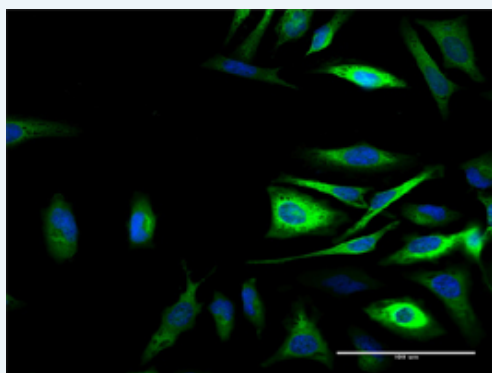


Western Blot analysis of CAST expression in transfected 293T cell line ([H00000831-T02](#)) by CAST MaxPab polyclonal antibody.

Lane 1: CAST transfected lysate(75.46 KDa).  
Lane 2: Non-transfected lysate.

[Protocol Download](#)

### Immunofluorescence



enlarge this image

Immunofluorescence of [purified](#) MaxPab antibody to CAST on HeLa cell. [antibody concentration 10 ug/ml]

[Protocol Download](#)

### Gene Information

Entrez GeneID: [831](#)

GeneBank [NM\\_173060.2](#)  
Accession#:

Protein [NP\\_775083.1](#)  
Accession#:

Gene Name: CAST

Gene Alias: BS-17,MGC9402

Gene [calpastatin](#)  
Description:

Omim ID: [114090](#)

Gene Ontology: [Hyperlink](#)

**Gene Summary:** The protein encoded by this gene is an endogenous calpain (calcium-dependent cysteine protease) inhibitor. It consists of an N-terminal domain L and four repetitive calpain-inhibition domains (domains 1-4), and it is involved in the proteolysis of amyloid precursor protein. The calpain/calpastatin system is involved in numerous membrane fusion events, such as neural vesicle exocytosis and platelet and red-cell aggregation. The encoded protein is also thought to affect the expression levels of genes encoding structural or regulatory proteins.

Several alternatively spliced transcript variants of this gene have been described, but the full-length natures of only some have been determined. [provided by RefSeq]

---

**Other Designations:** OTTHUMP00000158519,OTTHUMP00000158520,calpain inhibitor,heart-type calpastatin,sperm BS-17 component

---

#### **Related Disease**

---

[Alzheimer Disease](#) [Alzheimer disease](#) [Cardiovascular Diseases](#) [Diabetes Mellitus, Type 2](#) [Edema](#) [Hypertension](#) [Multiple Sclerosis](#) [Obesity](#) [Obesity](#) [Parkinson Disease](#) [Parkinson disease](#) [Tobacco Use Disorder](#)

---

[服務條款](#) | [隱私權政策](#) | [著作及商標](#) | [網站地圖](#)

©2016 亞諾法生技股份有限公司 Abnova Corporation. 版權所有.