



# SZABO SCANDIC

Part of Europa Biosite

## Produktinformation



Forschungsprodukte & Biochemikalien



Zellkultur & Verbrauchsmaterial



Diagnostik & molekulare Diagnostik



Laborgeräte & Service

Weitere Information auf den folgenden Seiten!  
See the following pages for more information!



### Lieferung & Zahlungsart

siehe unsere [Liefer- und Versandbedingungen](#)

### Zuschläge

- Mindermengenzuschlag
- Trockeneiszuschlag
- Gefahrgutzuschlag
- Expressversand

### SZABO-SCANDIC HandelsgmbH

Quellenstraße 110, A-1100 Wien

T. +43(0)1 489 3961-0

F. +43(0)1 489 3961-7

[mail@szabo-scandic.com](mailto:mail@szabo-scandic.com)

[www.szabo-scandic.com](http://www.szabo-scandic.com)

[linkedin.com/company/szaboscandic](https://www.linkedin.com/company/szaboscandic) 



**CARS purified MaxPab mouse polyclonal antibody (B01P)** MaxPab®

Catalog # : H00000833-B01P

規格 : [ 50 ug ]

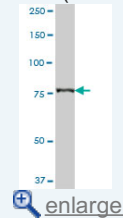
[List All](#)

**Specification**

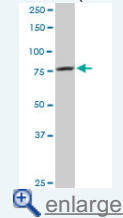
<b>Product Description:</b>	Mouse polyclonal antibody raised against a full-length human CARS protein.
<b>Immunogen:</b>	CARS (NP_001742.1, 1 a.a. ~ 748 a.a) full-length human protein.
<b>Sequence:</b>	MADSSGQQGKRRVQPQWSPAGTQPCRLHLYNSLTRNKEVFIPQDG KKVTWYCCGPTVYDASHMGHARSYISFDILRRVLKDYFKFDVFCMNTD IDDKIKRARQNHLEFYREKRPEAAQLLEDVQAALKPFSVKLNETTDPDK KQMLERIQHAVQLATEPLEKAVQSRLTGEEVNSCVELLEAKDLLSDW LDSTLGCDVTDNSIFSKLPKFWEGDFHRDMEALNVLPPDVLTRVSEYVP EIVNFVQKIVDNGYGYVNSGSVYFDTAKFASSEKHSYGKLVPEAVGDQKA LQEGEGDLSISADRLSEKRSPNDFALWKASKPGEPSWPCPWGKGRPG WHIECSAMAGTLLGASMDIHGGGFDLRFPHHDNELAQSEAYFENDCWV RYFLHTGHLTIAGCKMSKSLKNFITIKDALKKHSARQLRLAFLMHSWKDTL DYSSNTMESALQYEKFLNEFFLNVKDILRAPVDITGQFEKWGEEEEAELNK NFYDKKTAIHKALCDNVDTRTVMEEMRALVSQCNLYMAARKAVRKRPNQ ALLENIALYLTHMLKIFGAVEEDSSLGFPVGGPGTSLSEATVMPYLQVLS EFREGVVRKIAREQKVPEILQLSDALRDNILPELGVRFEDHEGLPTVVKLVD RNTLLKEREKRRVVEEEKRKKKEEAARRKQEQEAAKLAKMKIPSEMFL SETDKYSKFDENGLPTHDMEGKELSKGQAKLKKLFEAQEKLYKEYLQM AQNGSFQ
<b>Host:</b>	Mouse
<b>Reactivity:</b>	Human
<b>Quality Control Testing:</b>	Antibody reactive against mammalian transfected lysate.
<b>Storage Buffer:</b>	In 1x PBS, pH 7.4
<b>Storage Instruction:</b>	Store at -20°C or lower. Aliquot to avoid repeated freezing and thawing.
<b>MSDS:</b>	 <a href="#">Download</a>
<b>Datasheet:</b>	 <a href="#">Download</a>

**Application Image**

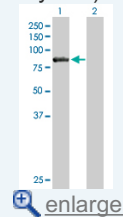
Western Blot (Tissue lysate)



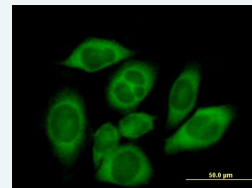
Western Blot (Cell lysate)



Western Blot (Transfected lysate)

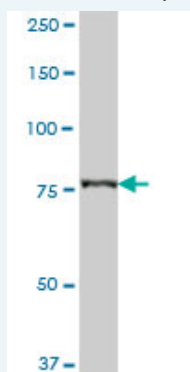


Immunofluorescence



**Applications**

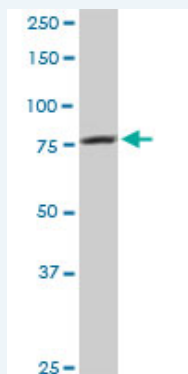
Western Blot (Tissue lysate)




CARS MaxPab polyclonal antibody. Western Blot analysis of CARS expression in human liver.

 [Protocol Download](#)

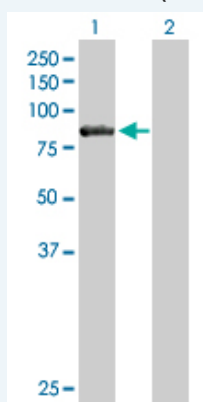
#### Western Blot (Cell lysate)



CARS MaxPab polyclonal antibody. Western Blot analysis of CARS expression in HeLa.

 [Protocol Download](#)


#### Western Blot (Transfected lysate)



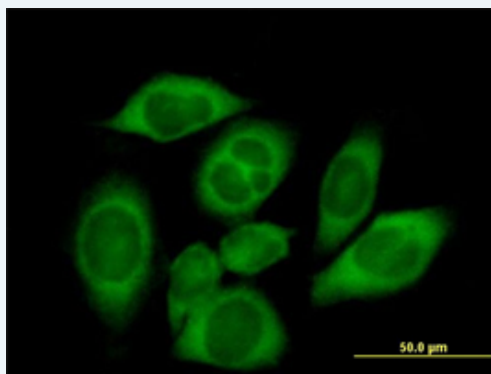
Western Blot analysis of CARS expression in transfected 293T cell line ([H00000833-T01](#)) by CARS MaxPab polyclonal antibody.


Lane 1: CARS transfected lysate(82.28 KDa).

Lane 2: Non-transfected lysate.

 [Protocol Download](#)

#### Immunofluorescence



 [enlarge this image](#)

Immunofluorescence of [purified](#) MaxPab antibody to CARS on HeLa cell. [antibody concentration 7 ug/ml]

 [Protocol Download](#)

#### Gene Information

Entrez GeneID: [833](#)

GeneBank [NM\\_001751.4](#)

Accession#:

**Protein** [NP\\_001742.1](#)

**Accession#:**

**Gene Name:** CARS

**Gene Alias:** CARS1,CYSRS,MGC:11246

**Gene Description:** cysteinyl-tRNA synthetase

**Omim ID:** [123859](#)

**Gene Ontology:** [Hyperlink](#)

**Gene Summary:** This gene encodes a class 1 aminoacyl-tRNA synthetase, cysteinyl-tRNA synthetase. Each of the twenty aminoacyl-tRNA synthetases catalyzes the aminoacylation of a specific tRNA or tRNA isoaccepting family with the cognate amino acid. This gene is one of several located near the imprinted gene domain of 11p15.5, an important tumor-suppressor gene region. Alterations in this region have been associated with the Beckwith-Wiedemann syndrome, Wilms tumor, rhabdomyosarcoma, adrenocortical carcinoma, and lung, ovarian, and breast cancer. Alternative splicing of this gene results in multiple transcript variants encoding distinct isoforms. [provided by RefSeq]

**Other Designations:** OTTHUMP00000012605,cysteine tRNA ligase 1, cytoplasmic,cysteine transase,cysteine-tRNA ligase

#### Gene Pathway

[Aminoacyl-tRNA biosynthesis](#)

#### Related Disease

[Diabetes Mellitus, Type 1](#) [Diabetes Mellitus, Type 2](#) [Diabetic Nephropathies](#)  
[Genetic Predisposition to Disease](#) [Kidney Failure, Chronic](#) [Proteinuria](#)

[服務條款](#) | [隱私權政策](#) | [著作及商標](#) | [網站地圖](#)

©2016 亞諾法生技股份有限公司 Abnova Corporation. 版權所有.