



SZABO SCANDIC

Part of Europa Biosite

Produktinformation



Forschungsprodukte & Biochemikalien



Zellkultur & Verbrauchsmaterial



Diagnostik & molekulare Diagnostik



Laborgeräte & Service

Weitere Information auf den folgenden Seiten!
See the following pages for more information!



Lieferung & Zahlungsart

siehe unsere [Liefer- und Versandbedingungen](#)

Zuschläge

- Mindermengenzuschlag
- Trockeneiszuschlag
- Gefahrgutzuschlag
- Expressversand

SZABO-SCANDIC HandelsgmbH

Quellenstraße 110, A-1100 Wien

T. +43(0)1 489 3961-0

F. +43(0)1 489 3961-7

mail@szabo-scandic.com

www.szabo-scandic.com

[linkedin.com/company/szaboscandic](https://www.linkedin.com/company/szaboscandic) 

CASP1 purified MaxPab rabbit polyclonal antibody (D01P) MaxPab®

Catalog # : H00000834-D01P

規格 : [100 ug]

[List All](#)

Specification

Product Description: Rabbit polyclonal antibody raised against a full-length human CASP1 protein.

Immunogen: CASP1 (NP_150635.1, 1 a.a. ~ 311 a.a) full-length human protein.

Sequence:
 MADKVLKEKRKLFIRSMGEAPQAVQDNPAMPTSSGSEGNVKLCSLEEA
 QRIWKQKSAEIYPIMDKSSRTRLALICNEEFDSIPRRTGAEVDITGMTMLL
 QNLGYSVDVKKNLTASDMTTELEAFahrPEHKTSDSTFLVFMShGIREGI
 CGKKHSEQVPDILQLNAIFNMLNTKNCPSLKDKPKVIIIQACRGDSPGVVW
 FKDSVGVSGNLSLPTTEEFEDDAIKKAHIEKDFIAFCSSTPDNVSWRHPT
 MGSVFIGRLIEHMQEYACSCDVVEEIFRKVRFSEQPDGRAQMPTTERVT
 LTRCFYLFPGH

Host: Rabbit

Reactivity: Human

Quality Control Testing: Antibody reactive against mammalian transfected lysate.

Storage Buffer: In 1x PBS, pH 7.4

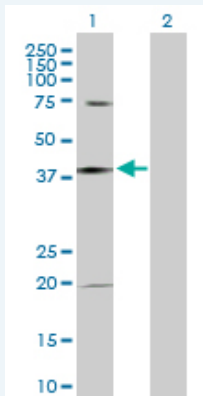
Storage Instruction: Store at -20°C or lower. Aliquot to avoid repeated freezing and thawing.

MSDS:  [Download](#)

Datasheet:  [Download](#)

Applications


Western Blot (Transfected lysate)



Western Blot analysis of CASP1 expression in transfected 293T cell line (H00000834-T02) by CASP1 MaxPab polyclonal antibody.

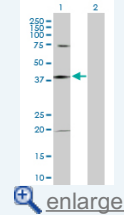
Lane 1: CASP1 transfected lysate(35.00 KDa).

Lane 2: Non-transfected lysate.

 [Protocol Download](#)

Application Image

Western Blot (Transfected lysate)



 [enlarge](#)

Gene Information

Entrez GeneID: [834](#)

**GeneBank
Accession#:** [NM_033293](#)

**Protein
Accession#:** [NP_150635.1](#)

Gene Name: CASP1

Gene Alias: ICE,IL1BC,P45

**Gene
Description:** caspase 1, apoptosis-related cysteine peptidase (interleukin 1, beta, convertase)

Omim ID: [147678](#)

Gene Ontology: [Hyperlink](#)

Gene Summary: This gene encodes a protein which is a member of the cysteine-aspartic acid protease (caspase) family. Sequential activation of caspases plays a central role in the execution-phase of cell apoptosis. Caspases exist as inactive proenzymes which undergo proteolytic processing at conserved aspartic residues to produce 2 subunits, large and small, that dimerize to form the active enzyme. This gene was identified by its ability to proteolytically cleave and activate the inactive precursor of interleukin-1, a cytokine involved in the processes such as inflammation, septic shock, and wound healing. This gene has been shown to induce cell apoptosis and may function in various developmental stages. Studies of a similar gene in mouse suggest a role in the pathogenesis of Huntington disease. Alternative splicing of this gene results in five transcript variants encoding distinct isoforms. [provided by RefSeq]

**Other
Designations:** CASP1 nirs variant 1,IL1B-convertase,caspase 1,caspase 1, apoptosis-related cysteine protease (interleukin 1, beta, convertase),interleukin 1-B converting enzyme,interleukin 1-beta convertase

Gene Pathway

[Amyotrophic lateral sclerosis \(ALS\)](#)

Related Disease

[Adenocarcinoma](#) [Alzheimer Disease](#) [Asthma](#) [Asthma](#) [Bronchiolitis, Viral](#) [Cardiovascular Diseases](#) [Cognition](#) [Coronary Artery Disease](#) [Diabetes Mellitus, Type 2](#) [Disease Susceptibility](#) [Edema](#) [Gastrointestinal Stromal Tumors](#) [Genetic Predisposition to Disease](#) [Hematologic Diseases](#) [Hodgkin Disease](#) [Infant, Premature, Diseases](#) [Inflammation](#) [Leukemia, chronic myeloid](#) [Leukemia, Myelogenous, Chronic, BCR-ABL Positive](#)

... see more