



SZABO SCANDIC

Part of Europa Biosite

Produktinformation



Forschungsprodukte & Biochemikalien



Zellkultur & Verbrauchsmaterial



Diagnostik & molekulare Diagnostik



Laborgeräte & Service

Weitere Information auf den folgenden Seiten!
See the following pages for more information!



Lieferung & Zahlungsart

siehe unsere [Liefer- und Versandbedingungen](#)

Zuschläge

- Mindermengenzuschlag
- Trockeneiszuschlag
- Gefahrgutzuschlag
- Expressversand

SZABO-SCANDIC HandelsgmbH

Quellenstraße 110, A-1100 Wien

T. +43(0)1 489 3961-0

F. +43(0)1 489 3961-7

mail@szabo-scandic.com

www.szabo-scandic.com

[linkedin.com/company/szaboscandic](https://www.linkedin.com/company/szaboscandic) 

CASP1 monoclonal antibody (M01), clone 3D2

Catalog # : H00000834-M01

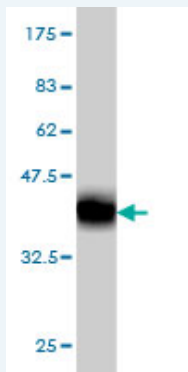
規格 : [100 ug]

[List All](#)

Specification

Product Description:	Mouse monoclonal antibody raised against a partial recombinant CASP1.
Immunogen:	CASP1 (AAH62327, 1 a.a. ~ 100 a.a) partial recombinant protein with GST tag. MW of the GST tag alone is 26 KDa.
Sequence:	MADKVLKEKRKLFIRSMGEAPQAVQDNPAMPTSSGSEGNVKLCSLEEA QRWVKQKSAEYIPIMDKSSRTRLALICNEEFDSIPRRTGAEVDITGMTMLL
Host:	Mouse
Reactivity:	Human
Isotype:	IgG2a Kappa

Quality Control Testing: Antibody Reactive Against Recombinant Protein.



Western Blot detection against Immunogen (36.63 KDa) .

Storage Buffer: In 1x PBS, pH 7.4

Storage Instruction: Store at -20°C or lower. Aliquot to avoid repeated freezing and thawing.

MSDS: [Download](#)

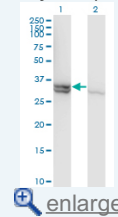
Datasheet: [Download](#)

Applications

Western Blot (Transfected lysate)

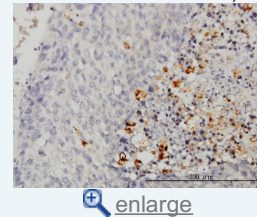
Application Image

Western Blot (Transfected lysate)

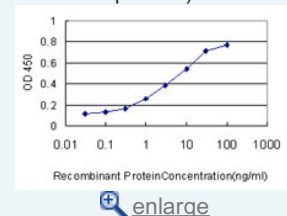


Western Blot (Recombinant protein)

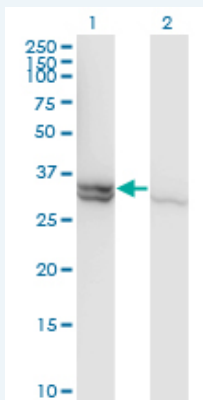
Immunohistochemistry (Formalin/PFA-fixed paraffin-embedded sections)



Sandwich ELISA (Recombinant protein)



ELISA



Western Blot analysis of CASP1 expression in transfected 293T cell line by CASP1 monoclonal antibody (M01), clone 3D2.

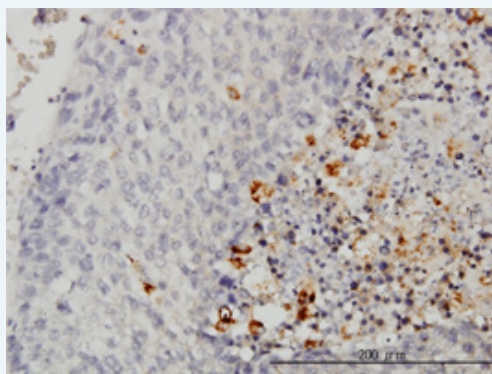
Lane 1: CASP1 transfected lysate(35 KDa).
Lane 2: Non-transfected lysate.

[Protocol Download](#)

Western Blot (Recombinant protein)

[Protocol Download](#)

Immunohistochemistry (Formalin/PFA-fixed paraffin-embedded sections)

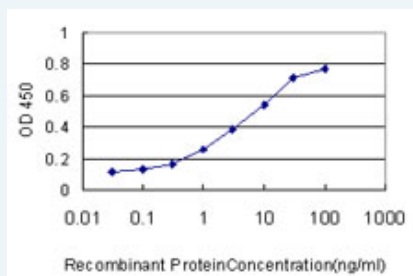


[enlarge this image](#)

Immunoperoxidase of monoclonal antibody to CASP1 on formalin-fixed paraffin-embedded human hepatocellular carcinoma. [antibody concentration 3 ug/ml]

[Protocol Download](#)

Sandwich ELISA (Recombinant protein)



Detection limit for recombinant GST tagged CASP1 is approximately 0.1 ng/ml as a capture antibody.

[Protocol Download](#)

ELISA

Gene Information

Entrez GeneID: [834](#)

GeneBank [BC062327](#)
Accession#:

Protein [AAH62327](#)
Accession#:

Gene Name: CASP1

Gene Alias: ICE,IL1BC,P45

Gene Description: caspase 1, apoptosis-related cysteine peptidase (interleukin 1, beta, convertase)

Omim ID: [147678](#)

Gene Ontology: [Hyperlink](#)

Gene Summary: This gene encodes a protein which is a member of the cysteine-aspartic acid protease (caspase) family. Sequential activation of caspases plays a central role in the execution-phase of cell apoptosis. Caspases exist as inactive proenzymes which undergo proteolytic processing at conserved aspartic residues to produce 2 subunits, large and small, that dimerize to form the active enzyme. This gene was identified by its ability to proteolytically cleave and activate the inactive precursor of interleukin-1, a cytokine involved in the processes such as inflammation, septic shock, and wound healing. This gene has been shown to induce cell apoptosis and may function in various developmental stages. Studies of a similar gene in mouse suggest a role in the pathogenesis of Huntington disease. Alternative splicing of this gene results in five transcript variants encoding distinct isoforms. [provided by RefSeq]

Other Designations: CASP1 nirs variant 1,IL1B-convertase,caspase 1,caspase 1, apoptosis-related cysteine protease (interleukin 1, beta, convertase),interleukin 1-B converting enzyme,interleukin 1-beta convertase

Gene Pathway

[Amyotrophic lateral sclerosis \(ALS\)](#)

Related Disease

[Adenocarcinoma](#) [Alzheimer Disease](#) [Asthma](#) [Asthma](#) [Bronchiolitis](#) [Viral Cardiovascular Diseases](#) [Cognition](#) [Coronary Artery Disease](#) [Diabetes Mellitus, Type 2](#) [Disease Susceptibility](#) [Edema](#) [Gastrointestinal Stromal Tumors](#) [Genetic Predisposition to Disease](#) [Hematologic Diseases](#) [Hodgkin Disease](#) [Infant, Premature, Diseases](#) [Inflammation](#) [Leukemia, chronic myeloid](#) [Leukemia, Myelogenous, Chronic, BCR-ABL Positive](#)

... see more