



# SZABO SCANDIC

Part of Europa Biosite

## Produktinformation



Forschungsprodukte & Biochemikalien



Zellkultur & Verbrauchsmaterial



Diagnostik & molekulare Diagnostik



Laborgeräte & Service

Weitere Information auf den folgenden Seiten!  
See the following pages for more information!



### Lieferung & Zahlungsart

siehe unsere [Liefer- und Versandbedingungen](#)

### Zuschläge

- Mindermengenzuschlag
- Trockeneiszuschlag
- Gefahrgutzuschlag
- Expressversand

### SZABO-SCANDIC HandelsgmbH

Quellenstraße 110, A-1100 Wien

T. +43(0)1 489 3961-0

F. +43(0)1 489 3961-7

[mail@szabo-scandic.com](mailto:mail@szabo-scandic.com)

[www.szabo-scandic.com](http://www.szabo-scandic.com)

[linkedin.com/company/szaboscandic](https://www.linkedin.com/company/szaboscandic) 

## CASP2 polyclonal antibody (A01)

Catalog # : H00000835-A01

規格 : [ 50 uL ]

[List All](#)

### Specification

**Product Description:** Mouse polyclonal antibody raised against a partial recombinant CASP2.

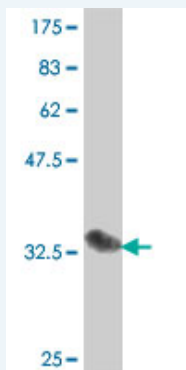
**Immunogen:** CASP2 (AAH02427, 121 a.a. ~ 220 a.a) partial recombinant protein with GST tag.

**Sequence:** TLSGLQHVLPPPLSCDYDLSLPFVCECPLYKCLRSLSTDTVEHSLDNKD  
GPLCLQVKPCTPEFYQTHFQLAYRLQSRPRGLALVLSNMHFTGEKELEF  
RS

**Host:** Mouse

**Reactivity:** Human

**Quality Control Testing:** Antibody Reactive Against Recombinant Protein.



Western Blot detection against Immunogen (37 KDa) .

**Storage Buffer:** 50 % glycerol

**Storage Instruction:** Store at -20°C or lower. Aliquot to avoid repeated freezing and thawing.

**MSDS:** [Download](#)

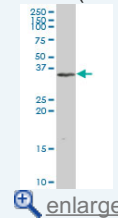
**Datasheet:** [Download](#)

### Applications

Western Blot (Cell lysate)

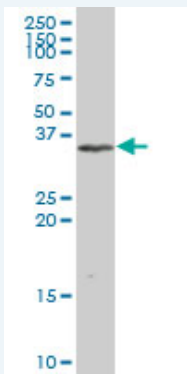
### Application Image

Western Blot (Cell lysate)




Western Blot (Recombinant protein)

ELISA



CASP2 polyclonal antibody (A01), Lot # 051116JC01. Western Blot analysis of CASP2 expression in Daoy. Isoform 34.923 kDa

 [Protocol Download](#)

#### Western Blot (Recombinant protein)

 [Protocol Download](#)

#### ELISA

#### Gene Information

**Entrez GeneID:** [835](#)

**GeneBank** [BC002427](#)

**Accession#:**

**Protein** [AAH02427](#)

**Accession#:**

**Gene Name:** CASP2

**Gene Alias:** CASP-2, ICH-1L, ICH-1L/1S, ICH1, NEDD2

**Gene** caspase 2, apoptosis-related cysteine peptidase

**Description:**

**Omim ID:** [600639](#)

**Gene Ontology:** [Hyperlink](#)

**Gene Summary:** This gene encodes a protein which is a member of the cysteine-aspartic acid protease (caspase) family. Sequential activation of caspases plays a central role in the execution-phase of cell apoptosis. Caspases exist as inactive proenzymes which undergo proteolytic processing at conserved aspartic residues to produce two subunits, large and small, that dimerize to form the active enzyme. The proteolytic cleavage of this protein is induced by a variety of apoptotic stimuli. Alternative splicing of this gene results in multiple transcript variants that encode different isoforms. [provided by RefSeq]

**Other Designations:** ICH-1 protease, NEDD2 apoptosis regulatory, caspase 2, neural precursor cell expressed, developmentally down-regulated 2

#### Related Disease

[Adenocarcinoma](#) [Esophageal Neoplasms](#) [Gastrointestinal Stromal Tumors](#) [Genetic Predisposition to Disease](#) [Head and Neck Neoplasms](#) [Hematologic Diseases](#) [Hodgkin Disease](#) [Lymphoma, Non-Hodgkin](#) [Lymphoproliferative Disorders](#) [Multiple Sclerosis](#) [Neoplasm Recurrence, Local](#) [Neoplasms](#) [Second Primary](#) [Occupational Diseases](#) [Prostatic Neoplasms](#) [Waldenstrom Macroglobulinemia](#) [Werner syndrome](#)

