



# SZABO SCANDIC

Part of Europa Biosite

## Produktinformation



Forschungsprodukte & Biochemikalien



Zellkultur & Verbrauchsmaterial



Diagnostik & molekulare Diagnostik



Laborgeräte & Service

Weitere Information auf den folgenden Seiten!  
See the following pages for more information!



### Lieferung & Zahlungsart

siehe unsere [Liefer- und Versandbedingungen](#)

### Zuschläge

- Mindermengenzuschlag
- Trockeneiszuschlag
- Gefahrgutzuschlag
- Expressversand

### SZABO-SCANDIC HandelsgmbH

Quellenstraße 110, A-1100 Wien

T. +43(0)1 489 3961-0

F. +43(0)1 489 3961-7

[mail@szabo-scandic.com](mailto:mail@szabo-scandic.com)

[www.szabo-scandic.com](http://www.szabo-scandic.com)

[linkedin.com/company/szaboscandic](https://www.linkedin.com/company/szaboscandic) 

## CASP2 monoclonal antibody (M10), clone 1C11

Catalog # : H00000835-M10

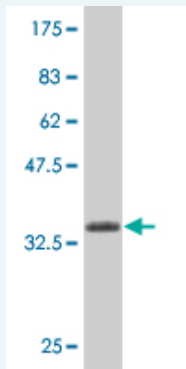
規格 : [ 100 ug ]

[List All](#)

### Specification

<b>Product Description:</b>	Mouse monoclonal antibody raised against a partial recombinant CASP2.
<b>Immunogen:</b>	CASP2 (AAH02427, 121 a.a. ~ 220 a.a) partial recombinant protein with GST tag. MW of the GST tag alone is 26 KDa.
<b>Sequence:</b>	TL SGLQHVL PPLSCDYDLSL PFPVCE SCPLYK LRLSTDTVEHSLDNKD GPLCLQVKPCTPEFYQTHFQLAYRLQSRPRGLALVLSNMHFTGEKELEF RS
<b>Host:</b>	Mouse
<b>Reactivity:</b>	Human
<b>Isotype:</b>	IgG2a Kappa

**Quality Control Testing:** Antibody Reactive Against Recombinant Protein.



Western Blot detection against Immunogen (36.63 KDa) .

**Storage Buffer:** In 1x PBS, pH 7.4

**Storage Instruction:** Store at -20°C or lower. Aliquot to avoid repeated freezing and thawing.

**MSDS:** [Download](#)

**Datasheet:** [Download](#)

### Applications

**Western Blot (Recombinant protein)**

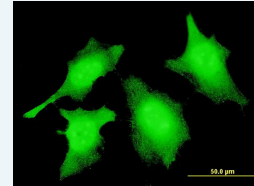
[Protocol Download](#)

**Immunofluorescence**

### Application Image

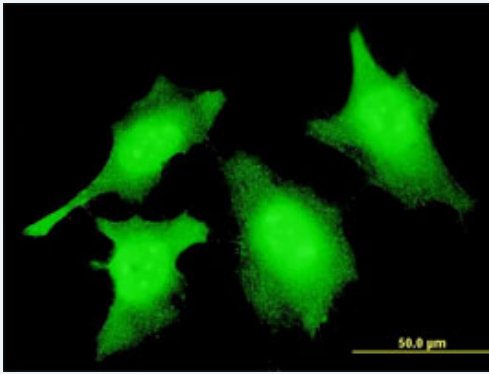
Western Blot (Recombinant protein)

Immunofluorescence



[enlarge](#)

ELISA



[enlarge this image](#)

Immunofluorescence of monoclonal antibody to CASP2 on HeLa cell . [antibody concentration 10 ug/ml]

[Protocol Download](#)

---

## ELISA

---

## Gene Information

---

**Entrez GeneID:** [835](#)

**GeneBank  
Accession#:** [BC002427](#)

**Protein  
Accession#:** [AAH02427](#)

**Gene Name:** CASP2

**Gene Alias:** CASP-2, ICH-1L, ICH-1L/1S, ICH1, NEDD2

**Gene  
Description:** caspase 2, apoptosis-related cysteine peptidase

**Omim ID:** [600639](#)

**Gene Ontology:** [Hyperlink](#)

**Gene Summary:** This gene encodes a protein which is a member of the cysteine-aspartic acid protease (caspase) family. Sequential activation of caspases plays a central role in the execution-phase of cell apoptosis. Caspases exist as inactive proenzymes which undergo proteolytic processing at conserved aspartic residues to produce two subunits, large and small, that dimerize to form the active enzyme. The proteolytic cleavage of this protein is induced by a variety of apoptotic stimuli. Alternative splicing of this gene results in multiple transcript variants that encode different isoforms. [provided by RefSeq]

**Other  
Designations:** ICH-1 protease, NEDD2 apoptosis regulatory, caspase 2, neural precursor cell expressed, developmentally down-regulated 2

---

## Related Disease

---

[Adenocarcinoma](#) [Esophageal Neoplasms](#) [Gastrointestinal Stromal Tumors](#)  
[Genetic Predisposition to Disease](#) [Head and Neck Neoplasms](#) [Hematologic Diseases](#)  
[Hodgkin Disease](#) [Lymphoma, Non-Hodgkin](#) [Lymphoproliferative Disorders](#)  
[Multiple Sclerosis](#) [Neoplasm Recurrence, Local](#) [Neoplasms, Second Primary](#)  
[Occupational Diseases](#) [Prostatic Neoplasms](#) [Waldenstrom Macroglobulinemia](#)  
[Werner syndrome](#)

