



SZABO SCANDIC

Part of Europa Biosite

Produktinformation



Forschungsprodukte & Biochemikalien



Zellkultur & Verbrauchsmaterial



Diagnostik & molekulare Diagnostik



Laborgeräte & Service

Weitere Information auf den folgenden Seiten!
See the following pages for more information!



Lieferung & Zahlungsart

siehe unsere [Liefer- und Versandbedingungen](#)

Zuschläge

- Mindermengenzuschlag
- Trockeneiszuschlag
- Gefahrgutzuschlag
- Expressversand

SZABO-SCANDIC HandelsgmbH

Quellenstraße 110, A-1100 Wien

T. +43(0)1 489 3961-0

F. +43(0)1 489 3961-7

mail@szabo-scandic.com

www.szabo-scandic.com

[linkedin.com/company/szaboscandic](https://www.linkedin.com/company/szaboscandic) 

CASP3 (Human) Matched Antibody Pair

Catalog # : H00000836-AP11

規格 : [1 Set]

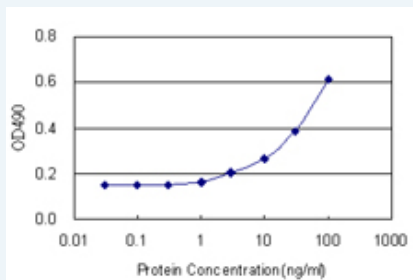
[List All](#)

Specification

Product Description: This antibody pair set comes with matched antibody pair to detect and quantify protein level of human CASP3.

Reactivity: Human

Quality Control Testing: Standard curve using recombinant protein (H00000836-P01) as an analyte.



Sandwich ELISA detection sensitivity ranging from 1 ng/ml to 100 ng/ml.

Supplied Product: Antibody pair set content:
 1. Capture antibody: rabbit MaxPab® affinity purified polyclonal anti-CASP3 (100 ug)
 2. Detection antibody: mouse monoclonal anti-CASP3, IgG2a Kappa (20 ug)
 *Reagents are sufficient for at least 1-2 x 96 well plates using recommended protocols.

Storage Instruction: Store reagents of the antibody pair set at -20°C or lower. Please aliquot to avoid repeated freeze thaw cycle. Reagents should be returned to -20°C storage immediately after use.

MSDS:  [Download](#)

Applications

ELISA Pair (Recombinant protein)

 [Protocol Download](#)

Gene Information

Entrez GeneID: [836](#)

Gene Name: CASP3

Gene Alias: CPP32, CPP32B, SCA-1

Gene Description: caspase 3, apoptosis-related cysteine peptidase

Omim ID: [600636](#)

Gene Ontology: [Hyperlink](#)

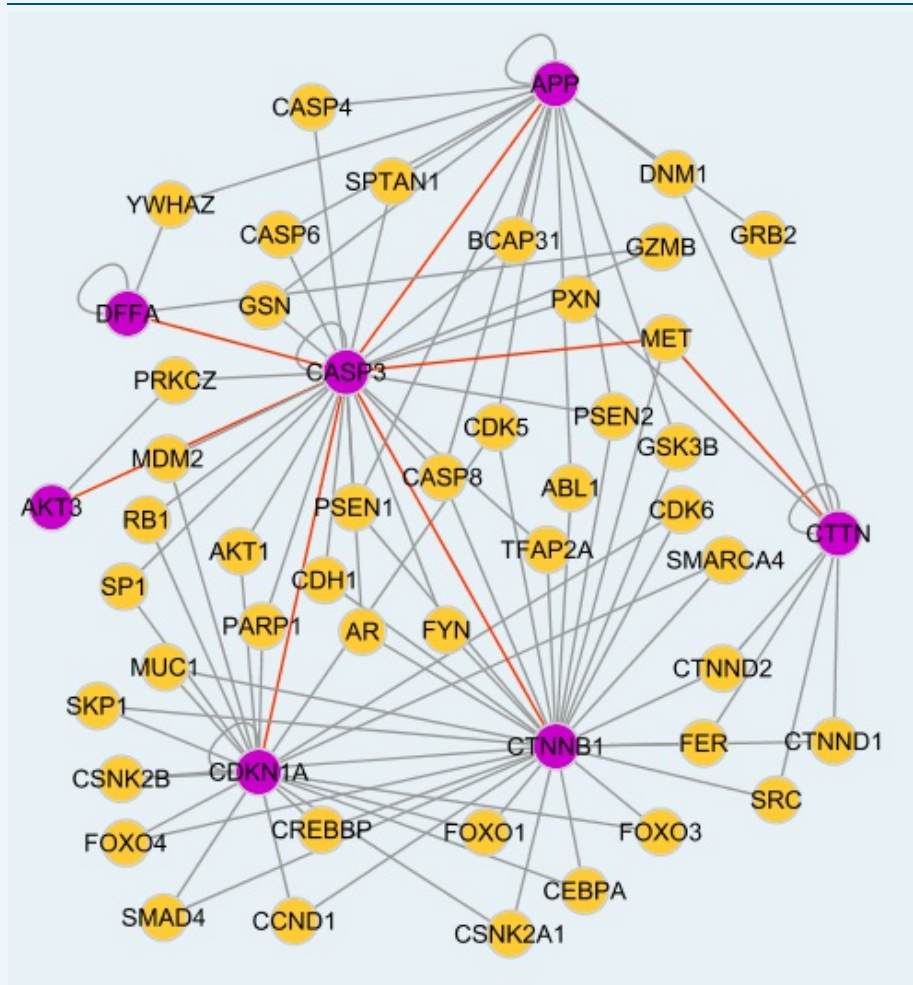
Application Image

ELISA Pair (Recombinant protein)

Gene Summary: This gene encodes a protein which is a member of the cysteine-aspartic acid protease (caspase) family. Sequential activation of caspases plays a central role in the execution-phase of cell apoptosis. Caspases exist as inactive proenzymes which undergo proteolytic processing at conserved aspartic residues to produce two subunits, large and small, that dimerize to form the active enzyme. This protein cleaves and activates caspases 6, 7 and 9, and the protein itself is processed by caspases 8, 9 and 10. It is the predominant caspase involved in the cleavage of amyloid-beta 4A precursor protein, which is associated with neuronal death in Alzheimer's disease. Alternative splicing of this gene results in two transcript variants that encode the same protein. [provided by RefSeq]

Other Designations: OTTHUMP00000165054,PARP cleavage protease,SREBP cleavage activity 1,Yama,apopain,caspase 3,caspase 3, apoptosis-related cysteine protease,cysteine protease CPP32,procaspase3

Interactome



Gene Pathway

[Alzheimer's disease](#) [Amyotrophic lateral sclerosis \(ALS\)](#) [Apoptosis](#) [Colorectal cancer](#) [Epithelial cell signaling in Helicobacter pylori infection](#) [Huntington's disease](#) [MAPK signaling pathway](#) [Natural killer cell mediated cytotoxicity](#) [p53 signaling pathway](#) [Parkinson's disease](#) [Pathways in cancer](#)

Related Disease

[Adenocarcinoma](#) [Attention Deficit Disorder with Hyperactivity](#) [Autistic Disorder](#) [Carcinoma, Large Cell](#) [Carcinoma, Non-Small-Cell Lung](#) [Carcinoma, Small Cell](#) [Carcinoma, Squamous Cell](#) [Cardiovascular Diseases](#) [Clubfoot](#) [Colorectal Neoplasms](#) [Diabetes Mellitus, Type 2](#) [Diabetic Nephropathies](#) [Disease Progression](#) [Edema](#) [Endometrial Neoplasms](#) [Esophageal Neoplasms](#) [Gastrointestinal Stromal Tumors](#) [Genetic Predisposition to Disease](#) [Head and Neck Neoplasms](#)

... see more

[服務條款](#) | [隱私權政策](#) | [著作及商標](#) | [網站地圖](#)

©2016 亞諾法生技股份有限公司 Abnova Corporation. 版權所有.