



# SZABO SCANDIC

Part of Europa Biosite

## Produktinformation



Forschungsprodukte & Biochemikalien



Zellkultur & Verbrauchsmaterial



Diagnostik & molekulare Diagnostik



Laborgeräte & Service

Weitere Information auf den folgenden Seiten!  
See the following pages for more information!



### Lieferung & Zahlungsart

siehe unsere [Liefer- und Versandbedingungen](#)

### Zuschläge

- Mindermengenzuschlag
- Trockeneiszuschlag
- Gefahrgutzuschlag
- Expressversand

### SZABO-SCANDIC HandelsgmbH

Quellenstraße 110, A-1100 Wien

T. +43(0)1 489 3961-0

F. +43(0)1 489 3961-7

[mail@szabo-scandic.com](mailto:mail@szabo-scandic.com)

[www.szabo-scandic.com](http://www.szabo-scandic.com)

[linkedin.com/company/szaboscandic](https://www.linkedin.com/company/szaboscandic) 



## CASP3 monoclonal antibody (M02), clone 4D3

Catalog # : H00000836-M02

規格 : [ 100 ug ]

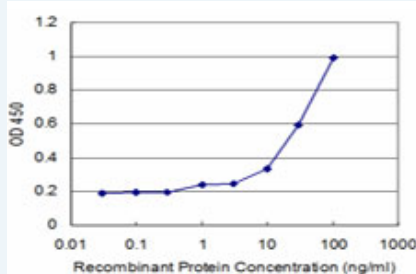
[List All](#)

### Specification


<b>Product Description:</b>	Mouse monoclonal antibody raised against a partial recombinant CASP3.
<b>Immunogen:</b>	CASP3 (AAH16926.1, 176 a.a. ~ 277 a.a) partial recombinant protein with GST tag. MW of the GST tag alone is 26 KDa.
<b>Sequence:</b>	SGVDDDMACHKIPVEADFLYAYSTAPGYYSWRNSKDGSWFIQSLCAML KQYADKLEFMHILTRVNRKVATEFESFSFDATFHAKKQIPCIVSMLTKELY FYH
<b>Host:</b>	Mouse
<b>Reactivity:</b>	Human
<b>Isotype:</b>	IgG2a Kappa
<b>Quality Control Testing:</b>	Antibody Reactive Against Recombinant Protein.
<b>Storage Buffer:</b>	In 1x PBS, pH 7.4
<b>Storage Instruction:</b>	Store at -20°C or lower. Aliquot to avoid repeated freezing and thawing.
<b>MSDS:</b>	 <a href="#">Download</a>
<b>Datasheet:</b>	 <a href="#">Download</a>

### Applications

#### Sandwich ELISA (Recombinant protein)



Detection limit for recombinant GST tagged CASP3 is approximately 1ng/ml as a capture antibody.

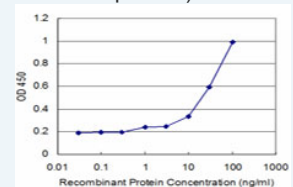
 [Protocol Download](#)


#### ELISA

#### *In situ* Proximity Ligation Assay (Cell)

### Application Image

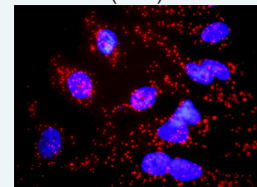
#### Sandwich ELISA (Recombinant protein)



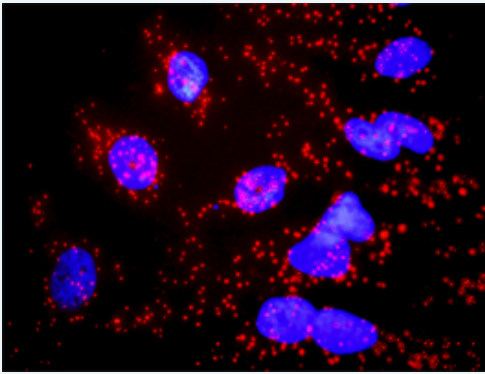
 [enlarge](#)

#### ELISA

#### *In situ* Proximity Ligation Assay (Cell)



 [enlarge](#)



Proximity Ligation Analysis of protein-protein interactions between CASP6 and CASP3. HeLa cells were stained with anti-CASP6 rabbit purified polyclonal 1:1200 and anti-CASP3 mouse monoclonal antibody 1:50. Each red dot represents the detection of protein-protein interaction complex, and nuclei were counterstained with DAPI (blue).

---

### Gene Information

---

**Entrez GeneID:** [836](#)

**GeneBank Accession#:** [NM\\_004346](#)

**Protein Accession#:** [AAH16926.1](#)

**Gene Name:** CASP3

**Gene Alias:** CPP32, CPP32B, SCA-1

**Gene Description:** caspase 3, apoptosis-related cysteine peptidase

**Omim ID:** [600636](#)

**Gene Ontology:** [Hyperlink](#)

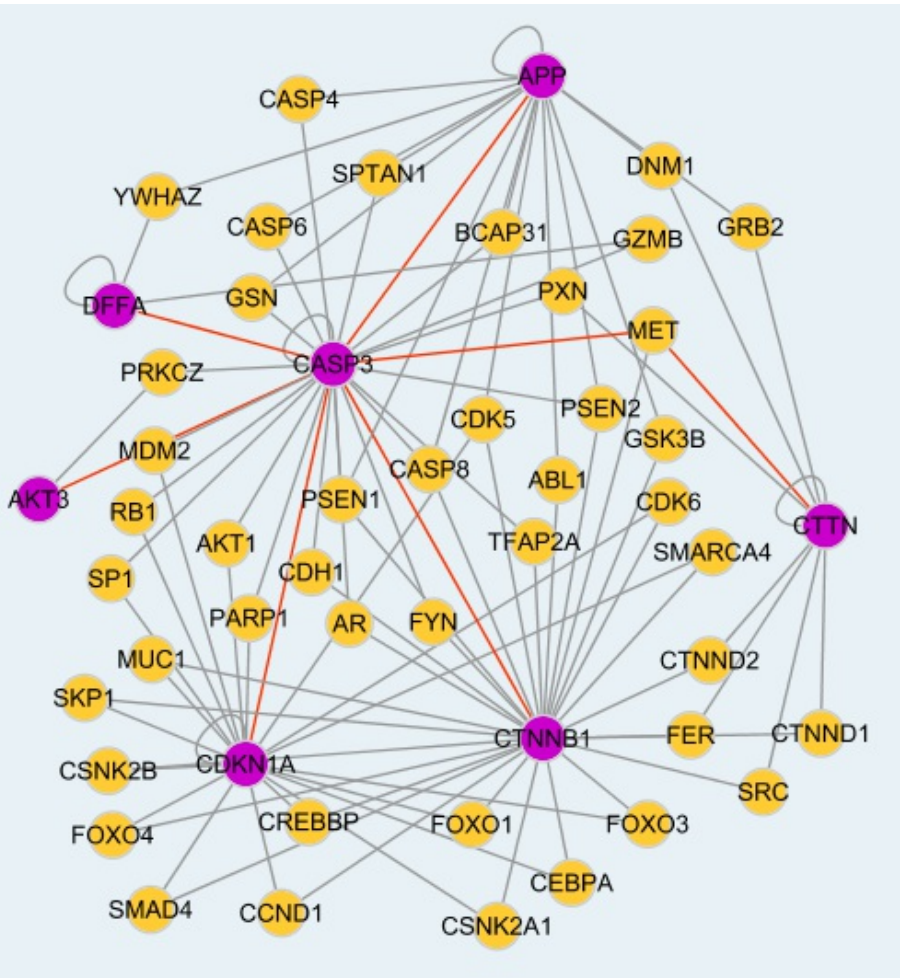
**Gene Summary:** This gene encodes a protein which is a member of the cysteine-aspartic acid protease (caspase) family. Sequential activation of caspases plays a central role in the execution-phase of cell apoptosis. Caspases exist as inactive proenzymes which undergo proteolytic processing at conserved aspartic residues to produce two subunits, large and small, that dimerize to form the active enzyme. This protein cleaves and activates caspases 6, 7 and 9, and the protein itself is processed by caspases 8, 9 and 10. It is the predominant caspase involved in the cleavage of amyloid-beta 4A precursor protein, which is associated with neuronal death in Alzheimer's disease. Alternative splicing of this gene results in two transcript variants that encode the same protein. [provided by RefSeq]

**Other Designations:** OTTHUMP00000165054, PARP cleavage protease, SREBP cleavage activity 1, Yama, apopain, caspase 3, caspase 3, apoptosis-related cysteine protease, cysteine protease CPP32, procaspase3

---

### Interactome

---



### Gene Pathway

[Alzheimer's disease](#)
[Amyotrophic lateral sclerosis \(ALS\)](#)
[Apoptosis](#)
[Colorectal cancer](#)  
[Epithelial cell signaling in Helicobacter pylori infection](#)
[Huntington's disease](#)  
[MAPK signaling pathway](#)
[Natural killer cell mediated cytotoxicity](#)
[p53 signaling pathway](#)  
[Parkinson's disease](#)
[Pathways in cancer](#)

### Related Disease

[Adenocarcinoma](#)
[Attention Deficit Disorder with Hyperactivity](#)
[Autistic Disorder](#)  
[Carcinoma, Large Cell](#)
[Carcinoma, Non-Small-Cell Lung](#)
[Carcinoma, Small Cell](#)  
[Carcinoma, Squamous Cell](#)
[Cardiovascular Diseases](#)
[Clubfoot](#)
[Colorectal Neoplasms](#)  
[Diabetes Mellitus, Type 2](#)
[Diabetic Nephropathies](#)
[Disease Progression](#)
[Edema](#)  
[Endometrial Neoplasms](#)
[Esophageal Neoplasms](#)
[Gastrointestinal Stromal Tumors](#)  
[Genetic Predisposition to Disease](#)
[Head and Neck Neoplasms](#)

... see more

[服務條款](#) | 
 [隱私權政策](#) | 
 [著作及商標](#) | 
 [網站地圖](#)

©2016 亞諾法生技股份有限公司 Abnova Corporation. 版權所有.