



# SZABO SCANDIC

Part of Europa Biosite

## Produktinformation



Forschungsprodukte & Biochemikalien



Zellkultur & Verbrauchsmaterial



Diagnostik & molekulare Diagnostik



Laborgeräte & Service

Weitere Information auf den folgenden Seiten!  
See the following pages for more information!



### Lieferung & Zahlungsart

siehe unsere [Liefer- und Versandbedingungen](#)

### Zuschläge

- Mindermengenzuschlag
- Trockeneiszuschlag
- Gefahrgutzuschlag
- Expressversand

### SZABO-SCANDIC HandelsgmbH

Quellenstraße 110, A-1100 Wien

T. +43(0)1 489 3961-0

F. +43(0)1 489 3961-7

[mail@szabo-scandic.com](mailto:mail@szabo-scandic.com)

[www.szabo-scandic.com](http://www.szabo-scandic.com)

[linkedin.com/company/szaboscandic](https://www.linkedin.com/company/szaboscandic) 

## CASP4 monoclonal antibody (M02), clone 7G7

Catalog # : H00000837-M02

規格 : [ 100 ug ]

[List All](#)

### Specification

**Product Description:** Mouse monoclonal antibody raised against a full-length recombinant CASP4.

**Immunogen:** CASP4 (AAH17839, 1 a.a. ~ 377 a.a) full-length recombinant protein with GST tag. MW of the GST tag alone is 26 KDa.

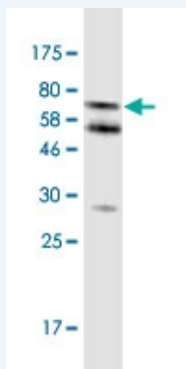
**Sequence:**  
 MAEGNHRKKPLKVLESLGKDFLTGVLNLEQNVLNWKEEEKKKYYDAK  
 TEDKVRVMADSMQEKQRMAGQMLLQTFNFNIDQISPNKKAHPNMEAGPP  
 ESGESTDALKLCPHEEFLRLCKERAEEIPIKERNRRLALICNTEFDHL  
 PPRNGADFDITGMKELLEGLDYSVDVEENLTARDMESALRAFATRPEHK  
 SSDSTFLVLM SHGILEGICGTVHDEKKPDVLLYDTIFQIFNRRNCLSLKDK  
 PKVIIVQACR GANR GELWVRDSPASLEVASSQSENLEEDAVYKTHVEKD  
 FIAFCSTPHN/SWRDSTMG SIFITQLITCFQKYSWCCHLEEVFRKVQQS  
 FETPRAKAQMPTIERLSMTRYFYLFPGN

**Host:** Mouse

**Reactivity:** Human

**Isotype:** IgG2a Kappa

**Quality Control Testing:** Antibody Reactive Against Recombinant Protein.



Western Blot detection against Immunogen (67.21 KDa) .

**Storage Buffer:** In 1x PBS, pH 7.4

**Storage Instruction:** Store at -20°C or lower. Aliquot to avoid repeated freezing and thawing.

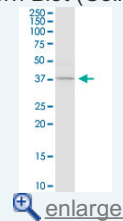
**Datasheet:** [Download](#)

### Applications

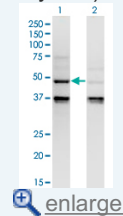
Western Blot (Cell lysate)

### Application Image

Western Blot (Cell lysate)

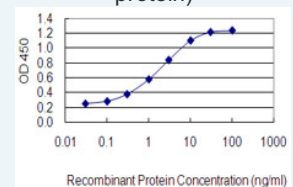


Western Blot (Transfected lysate)

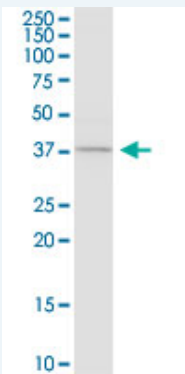


Western Blot (Recombinant protein)

Sandwich ELISA (Recombinant protein)



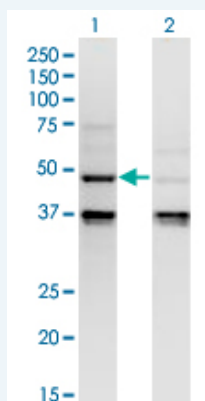
ELISA



CASP4 monoclonal antibody (M02), clone 7G7. Western Blot analysis of CASP4 expression in HeLa.

[Protocol Download](#)

#### Western Blot (Transfected lysate)



Western Blot analysis of CASP4 expression in transfected 293T cell line by CASP4 monoclonal antibody (M02), clone 7G7.

Lane 1: CASP4 transfected lysate (Predicted MW: 43.3 KDa).

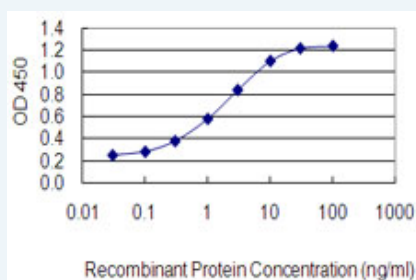
Lane 2: Non-transfected lysate.

[Protocol Download](#)

#### Western Blot (Recombinant protein)

[Protocol Download](#)

#### Sandwich ELISA (Recombinant protein)



Detection limit for recombinant GST tagged CASP4 is 0.03 ng/ml as a capture antibody.

[Protocol Download](#)

#### ELISA

#### Gene Information

Entrez GeneID: [837](#)

GeneBank [BC017839](#)

Accession#:

Protein [AAH17839](#)

Accession#:

**Gene Name:** CASP4

**Gene Alias:** ICE(rel)II,ICEREL-II,ICH-2,Mih1/TX,TX

**Gene Description:** caspase 4, apoptosis-related cysteine peptidase

**Omim ID:** [602664](#)

**Gene Ontology:** [Hyperlink](#)

**Gene Summary:** This gene encodes a protein that is a member of the cysteine-aspartic acid protease (caspase) family. Sequential activation of caspases plays a central role in the execution-phase of cell apoptosis. Caspases exist as inactive proenzymes composed of a prodomain and a large and small protease subunit. Activation of caspases requires proteolytic processing at conserved internal aspartic residues to generate a heterodimeric enzyme consisting of the large and small subunits. This caspase is able to cleave and activate its own precursor protein, as well as caspase 1 precursor. When overexpressed, this gene induces cell apoptosis. Alternative splicing results in transcript variants encoding distinct isoforms. [provided by RefSeq]

**Other Designations:** apoptotic cysteine protease Mih1/TX,caspase 4,caspase 4, apoptosis-related cysteine protease

#### **Related Disease**

[Adenocarcinoma](#) [Esophageal Neoplasms](#) [Gastrointestinal Stromal Tumors](#) [Genetic Predisposition to Disease](#) [Hematologic Diseases](#) [Hodgkin Disease](#) [Lymphoma, Non-Hodgkin](#) [Lymphoproliferative Disorders](#) [Occupational Diseases](#) [Prostatic Neoplasms](#) [Waldenstrom Macroglobulinemia](#) [Werner syndrome](#)

[服務條款](#) | [隱私權政策](#) | [著作及商標](#) | [網站地圖](#)

©2016 亞諾法生技股份有限公司 Abnova Corporation. 版權所有.