



# SZABO SCANDIC

Part of Europa Biosite

## Produktinformation



Forschungsprodukte & Biochemikalien



Zellkultur & Verbrauchsmaterial



Diagnostik & molekulare Diagnostik



Laborgeräte & Service

Weitere Information auf den folgenden Seiten!  
See the following pages for more information!



### Lieferung & Zahlungsart

siehe unsere [Liefer- und Versandbedingungen](#)

### Zuschläge

- Mindermengenzuschlag
- Trockeneiszuschlag
- Gefahrgutzuschlag
- Expressversand

### SZABO-SCANDIC HandelsgmbH

Quellenstraße 110, A-1100 Wien

T. +43(0)1 489 3961-0

F. +43(0)1 489 3961-7

[mail@szabo-scandic.com](mailto:mail@szabo-scandic.com)

[www.szabo-scandic.com](http://www.szabo-scandic.com)

[linkedin.com/company/szaboscandic](https://www.linkedin.com/company/szaboscandic) 

## CASP6 purified MaxPab rabbit polyclonal antibody (D01P) MaxPab®

Catalog # : H00000839-D01P

規格 : [ 100 ug ]

[List All](#)

### Specification

**Product Description:** Rabbit polyclonal antibody raised against a full-length human CASP6 protein.

**Immunogen:** CASP6 (NP\_001217.2, 1 a.a. ~ 293 a.a) full-length human protein.

**Sequence:**  
 MSSASGLRRGHPAGGEENMTETDAFYKREMFDAEKYKMDHRRRGIAL  
 IFNHERFFWHLTLPERRGTCADRDNLTRRFSDLGFVVKCFNDLKAELL  
 LKIHEVSTVSHADADCFVCFVLSHGEGNHIYAYDAKIEIQTLTGLFKGDKC  
 HSLVGGPKIFIIQACRGNQHDVPIPLDVVDNQTEKLDTNITEVDAASVYTL  
 PAGADFLMCYSVAEGYYSHRETVNGSWYIQDLCEMLGKYGSSLEFTELL  
 TLVNRKVSQRRVDFCKDPSAIGKKQVPCFASMLTKKLHFFPKSN

**Host:** Rabbit

**Reactivity:** Human, Mouse

**Quality Control Testing:** Antibody reactive against mammalian transfected lysate.

**Storage Buffer:** In 1x PBS, pH 7.4

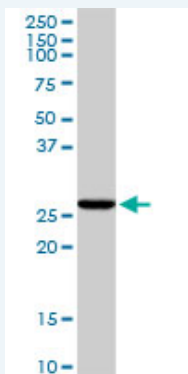
**Storage Instruction:** Store at -20°C or lower. Aliquot to avoid repeated freezing and thawing.

**MSDS:**  [Download](#)

**Datasheet:**  [Download](#)

### Applications

#### Western Blot (Tissue lysate)



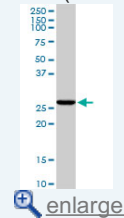
CASP6 MaxPab rabbit polyclonal antibody. Western Blot analysis of CASP6 expression in mouse lung.

 [Protocol Download](#)

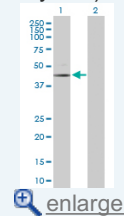
#### Western Blot (Transfected lysate)

### Application Image

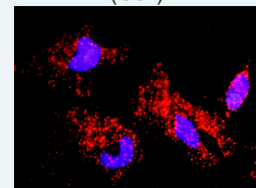
#### Western Blot (Tissue lysate)




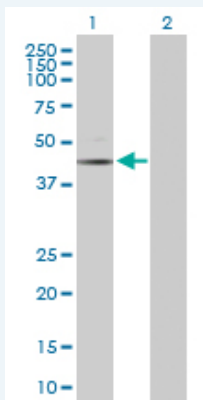
#### Western Blot (Transfected lysate)



#### In situ Proximity Ligation Assay (Cell)



 [enlarge](#)

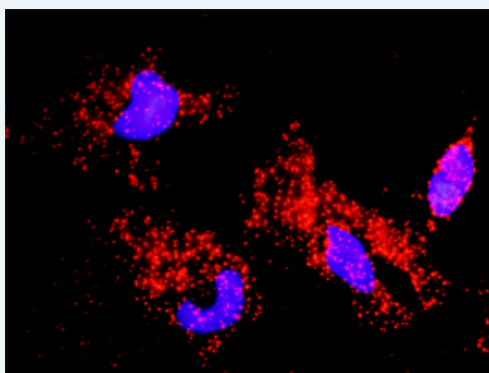


Western Blot analysis of CASP6 expression in transfected 293T cell line ([H00000839-T02](#)) by CASP6 MaxPab polyclonal antibody.

Lane 1: CASP6 transfected lysate(33.30 KDa).  
Lane 2: Non-transfected lysate.

 [Protocol Download](#)

### *In situ* Proximity Ligation Assay (Cell)



Proximity Ligation Analysis of protein-protein interactions between CASP6 and APP. HeLa cells were stained with anti-CASP6 rabbit purified polyclonal 1:1200 and anti-APP mouse monoclonal antibody 1:50. Each red dot represents the detection of protein-protein interaction complex, and nuclei were counterstained with DAPI (blue).

### Gene Information

Entrez GeneID: [839](#)

GeneBank [NM\\_001226](#)  
Accession#:

Protein [NP\\_001217.2](#)  
Accession#:

Gene Name: CASP6

Gene Alias: MCH2

Gene Description: caspase 6, apoptosis-related cysteine peptidase

Omim ID: [601532](#)

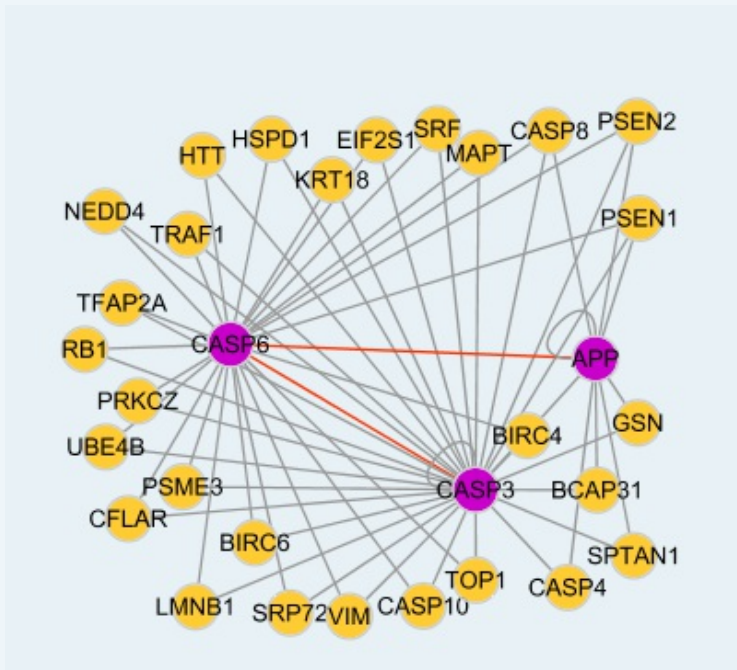
Gene Ontology: [Hyperlink](#)

**Gene Summary:** This gene encodes a protein which is a member of the cysteine-aspartic acid protease (caspase) family. Sequential activation of caspases plays a central role in the execution-phase of cell apoptosis. Caspases exist as inactive proenzymes which undergo proteolytic processing at conserved aspartic residues to produce two subunits, large and small, that dimerize to form the active enzyme. This protein is processed by caspases 7, 8 and 10, and is thought to function as a downstream

enzyme in the caspase activation cascade. Alternative splicing of this gene results in two transcript variants that encode different isoforms. [provided by RefSeq]

**Other Designations:** apoptotic protease MCH-2, caspase 6, caspase 6, apoptosis-related cysteine protease

### Interactome



### Gene Pathway

[Apoptosis](#)

### Related Disease

[Adenocarcinoma](#) [Alcoholism](#) [Carcinoma, Large Cell](#) [Colorectal Neoplasms](#) [Disease Progression](#) [Gastrointestinal Stromal Tumors](#) [Genetic Predisposition to Disease](#) [Hematologic Diseases](#) [Hodgkin Disease](#) [Lung Neoplasms](#) [Lymphatic Metastasis](#) [Lymphoma, Non-Hodgkin](#) [Lymphoproliferative Disorders](#) [Neoplasm Metastasis](#) [Neoplasms, Squamous Cell](#) [Occupational Diseases](#) [Prostatic Neoplasms](#) [Small Cell Lung Carcinoma](#) [Stomach Neoplasms](#)

[... see more](#)

[服務條款](#) | [隱私權政策](#) | [著作及商標](#) | [網站地圖](#)

©2016 亞諾法生技股份有限公司 Abnova Corporation. 版權所有.