



SZABO SCANDIC

Part of Europa Biosite

Produktinformation



Forschungsprodukte & Biochemikalien



Zellkultur & Verbrauchsmaterial



Diagnostik & molekulare Diagnostik



Laborgeräte & Service

Weitere Information auf den folgenden Seiten!
See the following pages for more information!



Lieferung & Zahlungsart

siehe unsere [Liefer- und Versandbedingungen](#)

Zuschläge

- Mindermengenzuschlag
- Trockeneiszuschlag
- Gefahrgutzuschlag
- Expressversand

SZABO-SCANDIC HandelsgmbH

Quellenstraße 110, A-1100 Wien

T. +43(0)1 489 3961-0

F. +43(0)1 489 3961-7

mail@szabo-scandic.com

www.szabo-scandic.com

[linkedin.com/company/szaboscandic](https://www.linkedin.com/company/szaboscandic) 

CASP6 293T Cell Transient Overexpression Lysate(Denatured)

Catalog # : H00000839-T02

規格 : [100 uL]

[List All](#)

Specification

Transfected Cell Line: 293T

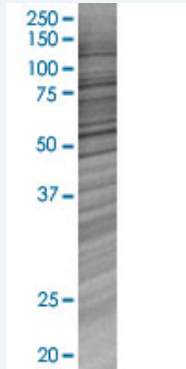
Plasmid: pCMV-CASP6 full-length

Host: Human

Theoretical MW (kDa): 33.3

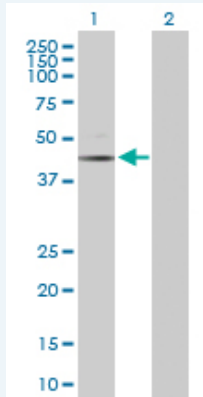
Quality Control Testing: Transient overexpression cell lysate was tested with Anti-CASP6 antibody ([H00000839-D01P](#)) by Western Blots.

SDS-PAGE Gel



CASP6 transfected lysate.

Western Blot



Lane 1: CASP6 transfected lysate (33.30 KDa)

Lane 2: Non-transfected lysate.

Storage Buffer: 1X Sample Buffer (50 mM Tris-HCl, 2% SDS, 10% glycerol, 300 mM 2-mercaptoethanol, 0.01% Bromophenol blue)

Storage Instruction: Store at -80°C. Aliquot to avoid repeated freezing and thawing.

MSDS:  [Download](#)

Applications

Western Blot

Gene Information

Entrez GeneID: [839](#)

GeneBank [NM_001226](#)
Accession#:

Protein [NP_001217.2](#)
Accession#:

Gene Name: CASP6

Gene Alias: MCH2

Gene Description: caspase 6, apoptosis-related cysteine peptidase

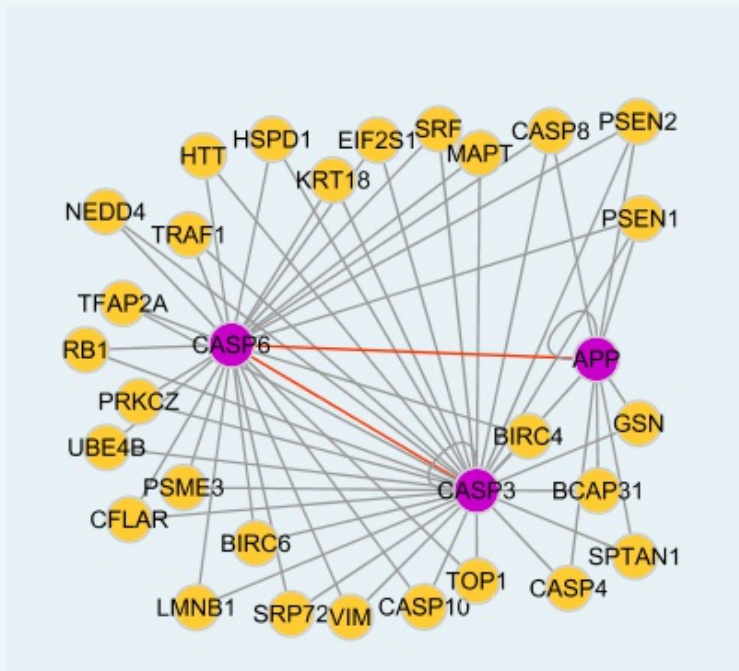
Omim ID: [601532](#)

Gene Ontology: [Hyperlink](#)

Gene Summary: This gene encodes a protein which is a member of the cysteine-aspartic acid protease (caspase) family. Sequential activation of caspases plays a central role in the execution-phase of cell apoptosis. Caspases exist as inactive proenzymes which undergo proteolytic processing at conserved aspartic residues to produce two subunits, large and small, that dimerize to form the active enzyme. This protein is processed by caspases 7, 8 and 10, and is thought to function as a downstream enzyme in the caspase activation cascade. Alternative splicing of this gene results in two transcript variants that encode different isoforms. [provided by RefSeq]

Other Designations: apoptotic protease MCH-2,caspase 6,caspase 6, apoptosis-related cysteine protease

Interactome



Gene Pathway

[Apoptosis](#)

Related Disease

[Adenocarcinoma](#) [Alcoholism](#) [Carcinoma, Large Cell](#) [Colorectal Neoplasms](#)
[Disease Progression](#) [Gastrointestinal Stromal Tumors](#) [Genetic Predisposition to Disease](#)
[Hematologic Diseases](#) [Hodgkin Disease](#) [Lung Neoplasms](#) [Lymphatic Metastasis](#)
[Lymphoma, Non-Hodgkin](#) [Lymphoproliferative Disorders](#) [Neoplasm Metastasis](#)
[Neoplasms, Squamous Cell](#) [Occupational Diseases](#) [Prostatic Neoplasms](#)
[Small Cell Lung Carcinoma](#) [Stomach Neoplasms](#)

[... see more](#)

[服務條款](#) | [隱私權政策](#) | [著作及商標](#) | [網站地圖](#)

©2016 亞諾法生技股份有限公司 Abnova Corporation. 版權所有.