



SZABO SCANDIC

Part of Europa Biosite

Produktinformation



Forschungsprodukte & Biochemikalien



Zellkultur & Verbrauchsmaterial



Diagnostik & molekulare Diagnostik



Laborgeräte & Service

Weitere Information auf den folgenden Seiten!
See the following pages for more information!



Lieferung & Zahlungsart

siehe unsere [Liefer- und Versandbedingungen](#)

Zuschläge

- Mindermengenzuschlag
- Trockeneiszuschlag
- Gefahrgutzuschlag
- Expressversand

SZABO-SCANDIC HandelsgmbH

Quellenstraße 110, A-1100 Wien

T. +43(0)1 489 3961-0

F. +43(0)1 489 3961-7

mail@szabo-scandic.com

www.szabo-scandic.com

[linkedin.com/company/szaboscandic](https://www.linkedin.com/company/szaboscandic) 

CASP7 MaxPab mouse polyclonal antibody (B01) MaxPab®

Catalog # : H00000840-B01

規格 : [50 uL]

[List All](#)

Specification

Product Description: Mouse polyclonal antibody raised against a full-length human CASP7 protein.

Immunogen: CASP7 (NP_001218, 1 a.a. ~ 303 a.a) full-length human protein.

Sequence:
MADDQGCIEEQGVEDSANEDSVDAKPDRSSFVPSLFSKKKKNVTMRSIK
TTRDRVPTYQYNMNFELGKCIINNKNFDKVTGMGVRNGTDKDAEALFK
CFRSLGFDVIVYNDSCAKMQDLLKKASEEDHTNAACFACILLSHGEENVI
YGKDGVTPIKDLTAHFRGDRCKTLLEKPKLFFIQACRGTELDGDIQADSG
PINDTDANPRYKIPVEADFLFAYSTVPGYYSWRSPGRGSWFVQALCSILE
EHGKDLEIMQILTRVNDRVARHFESQSDDPHFHEKKQIPCVMMLTKELY
FSQ

Host: Mouse

Reactivity: Human

Quality Control Testing: Antibody reactive against mammalian transfected lysate.

Storage Buffer: No additive

Storage Instruction: Store at -20°C or lower. Aliquot to avoid repeated freezing and thawing.

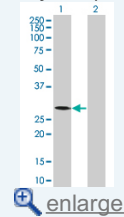
Note: For IHC and IF applications, antibody purification with Protein A will be needed prior to use.


MSDS:  [Download](#)

Datasheet:  [Download](#)

Application Image

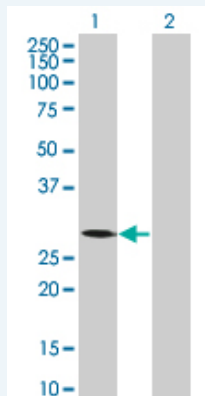
Western Blot (Transfected lysate)



 [enlarge](#)

Applications

Western Blot (Transfected lysate)



Western Blot analysis of CASP7 expression in transfected 293T cell line ([H00000840-T01](#)) by CASP7 MaxPab polyclonal antibody.

Lane 1: CASP7 transfected lysate(33.33 KDa).

Lane 2: Non-transfected lysate.

Gene Information

Entrez GeneID: [840](#)

GeneBank Accession#: [NM_001227](#)

Protein Accession#: [NP_001218](#)

Gene Name: CASP7

Gene Alias: CMH-1,ICE-LAP3,MCH3

Gene Description: caspase 7, apoptosis-related cysteine peptidase

Omim ID: [601761](#)

Gene Ontology: [Hyperlink](#)

Gene Summary: This gene encodes a protein which is a member of the cysteine-aspartic acid protease (caspase) family. Sequential activation of caspases plays a central role in the execution-phase of cell apoptosis. Caspases exist as inactive proenzymes which undergo proteolytic processing at conserved aspartic residues to produce two subunits, large and small, that dimerize to form the active enzyme. The precursor of this caspase is cleaved by caspase 3 and 10. It is activated upon cell death stimuli and induces apoptosis. Alternative splicing results in four transcript variants, encoding three distinct isoforms. [provided by RefSeq]

Other Designations: ICE-like apoptotic protease 3,Lice2
alpha/beta/gamma,OTTHUMP00000020510,OTTHUMP00000020511,OTTHUMP00000020512,OTTHUMP00000020514,apoptotic protease MCH-3,caspase 7,caspase 7 isoform delta,caspase 7, apoptosis-related cysteine protease

Gene Pathway

[Alzheimer's disease Apoptosis](#)

Related Disease

[Adenocarcinoma](#) [Alzheimer Disease](#) [Amnesia](#) [Arthritis, Rheumatoid](#) [Carcinoma, Large Cell](#) [Carcinoma, Non-Small-Cell Lung](#) [Cardiovascular Diseases](#) [Cognition Disorders](#) [Colorectal Neoplasms](#) [Diabetes Mellitus, Type 2](#) [Disease Progression](#) [Edema](#) [Endometrial Neoplasms](#) [Esophageal Neoplasms](#) [Gastrointestinal Stromal Tumors](#) [Genetic Predisposition to Disease](#) [Head and Neck Neoplasms](#) [Hematologic Diseases](#) [Hodgkin Disease](#)

... see more