



SZABO SCANDIC

Part of Europa Biosite

Produktinformation



Forschungsprodukte & Biochemikalien



Zellkultur & Verbrauchsmaterial



Diagnostik & molekulare Diagnostik



Laborgeräte & Service

Weitere Information auf den folgenden Seiten!
See the following pages for more information!



Lieferung & Zahlungsart

siehe unsere [Liefer- und Versandbedingungen](#)

Zuschläge

- Mindermengenzuschlag
- Trockeneiszuschlag
- Gefahrgutzuschlag
- Expressversand

SZABO-SCANDIC HandelsgmbH

Quellenstraße 110, A-1100 Wien

T. +43(0)1 489 3961-0

F. +43(0)1 489 3961-7

mail@szabo-scandic.com

www.szabo-scandic.com

[linkedin.com/company/szaboscandic](https://www.linkedin.com/company/szaboscandic) 

CASP7 (Human) IP-WB Antibody Pair

Catalog # : H00000840-PW2

規格 : [1 Set]

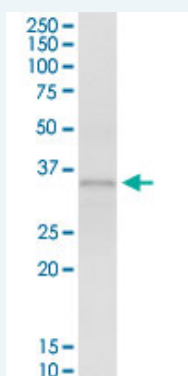
List All

Specification

Product Description: This IP-WB antibody pair set comes with one antibody for immunoprecipitation and another to detect the precipitated protein in western blot.

Reactivity: Human

Quality Control Testing: Immunoprecipitation-Western Blot (IP-WB)



Immunoprecipitation of CASP7 transfected lysate using rabbit polyclonal anti-CASP7 and Protein A Magnetic Bead ([U0007](#)), and immunoblotted with mouse purified polyclonal anti-CASP7.

Supplied Product: Antibody pair set content:
 1. Antibody pair for IP: rabbit polyclonal anti-CASP7 (300 ul)
 2. Antibody pair for WB: mouse purified polyclonal anti-CASP7 (50 ug)

Storage Instruction: Store reagents of the antibody pair set at -20°C or lower. Please aliquot to avoid repeated freeze thaw cycle. Reagents should be returned to -20°C storage immediately after use.

Applications

Immunoprecipitation-Western Blot

 [Protocol Download](#)

Gene Information

Entrez GeneID: [840](#)

Gene Name: CASP7

Gene Alias: CMH-1,ICE-LAP3,MCH3

Gene Description: caspase 7, apoptosis-related cysteine peptidase

Omim ID: [601761](#)

Gene Ontology: [Hyperlink](#)

Gene Summary: This gene encodes a protein which is a member of the cysteine-aspartic

acid protease (caspase) family. Sequential activation of caspases plays a central role in the execution-phase of cell apoptosis. Caspases exist as inactive proenzymes which undergo proteolytic processing at conserved aspartic residues to produce two subunits, large and small, that dimerize to form the active enzyme. The precursor of this caspase is cleaved by caspase 3 and 10. It is activated upon cell death stimuli and induces apoptosis. Alternative splicing results in four transcript variants, encoding three distinct isoforms. [provided by RefSeq]

Other Designations: ICE-like apoptotic protease 3,Lice2
alpha/beta/gamma,OTTHUMP00000020510,OTTHUMP00000020511,OTTHUMP00000020512,OTTHUMP00000020514,apoptotic protease MCH-3,caspase 7,caspase 7 isoform delta,caspase 7, apoptosis-related cysteine protease

Gene Pathway

[Alzheimer's disease](#) [Apoptosis](#)

Related Disease

[Adenocarcinoma](#) [Alzheimer Disease](#) [Amnesia](#) [Arthritis, Rheumatoid](#) [Carcinoma, Large Cell](#) [Carcinoma, Non-Small-Cell Lung](#) [Cardiovascular Diseases](#) [Cognition Disorders](#) [Colorectal Neoplasms](#) [Diabetes Mellitus, Type 2](#) [Disease Progression](#) [Edema](#) [Endometrial Neoplasms](#) [Esophageal Neoplasms](#) [Gastrointestinal Stromal Tumors](#) [Genetic Predisposition to Disease](#) [Head and Neck Neoplasms](#) [Hematologic Diseases](#) [Hodgkin Disease](#)

... see more

[服務條款](#) | [隱私權政策](#) | [著作及商標](#) | [網站地圖](#)

©2016 亞諾法生技股份有限公司 Abnova Corporation. 版權所有.