



SZABO SCANDIC

Part of Europa Biosite

Produktinformation



Forschungsprodukte & Biochemikalien



Zellkultur & Verbrauchsmaterial



Diagnostik & molekulare Diagnostik



Laborgeräte & Service

Weitere Information auf den folgenden Seiten!
See the following pages for more information!



Lieferung & Zahlungsart

siehe unsere [Liefer- und Versandbedingungen](#)

Zuschläge

- Mindermengenzuschlag
- Trockeneiszuschlag
- Gefahrgutzuschlag
- Expressversand

SZABO-SCANDIC HandelsgmbH

Quellenstraße 110, A-1100 Wien

T. +43(0)1 489 3961-0

F. +43(0)1 489 3961-7

mail@szabo-scandic.com

www.szabo-scandic.com

[linkedin.com/company/szaboscandic](https://www.linkedin.com/company/szaboscandic) 

CASP9 monoclonal antibody (M01), clone 3B8-4G2

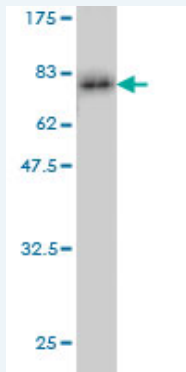
Catalog # : H00000842-M01

規格 : [100 ug]

[List All](#)

Specification

Product Description:	Mouse monoclonal antibody raised against a full length recombinant CASP9.
Immunogen:	CASP9 (AAH02452.1, 1 a.a. ~ 416 a.a) full-length recombinant protein with GST tag. MW of the GST tag alone is 26 KDa.
Sequence:	MDEADRRLLRRCLRLVEELQVDQLWDALLSRELF RPHMEDIQRAGSG SRRDQARQLIIDLETRGSQALPLFISCLEDTGQDMLASFLRTNRQAAKLS KPTLENLTPVLRPEIRKPEVLRPETPRPVDIGSGGF GDVGALES LRGNA DLAYILSMEPCGHCLIIINNVNFCRESGLRTRTGSNIDCEKLR RRFSSLHFM VEVKGDLTAKKMLALLELAQQDHGALDCCVVILSHGCQASHLQFPGA VYGTDGCPVSV EKIVNIFNGTSCPSLGGKPKLFFIQACGGEQKDHGFEV ASTSPEDESPGSNPEPDATPFQEGLRFTDQLDAISSLPTPSDIFVSYSTF PGFVSWRDPKSGSWYVETLDDIFEQWAHSEDLQSLLLRVANAVSVKGIY KQMPGCFNFLRKKLFFKTS
Host:	Mouse
Reactivity:	Human
Isotype:	IgG1 Kappa
Quality Control Testing:	Antibody Reactive Against Recombinant Protein.



Western Blot detection against Immunogen (71.5 KDa) .

Storage Buffer: In 1x PBS, pH 7.4

Storage Instruction: Store at -20°C or lower. Aliquot to avoid repeated freezing and thawing.

MSDS: [Download](#)

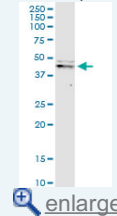
Datasheet: [Download](#)

Applications

Western Blot (Cell lysate)

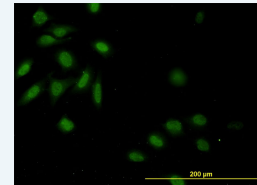
Application Image

Western Blot (Cell lysate)

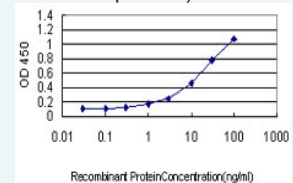


Western Blot (Recombinant protein)

Immunofluorescence

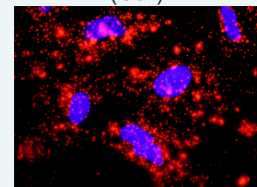


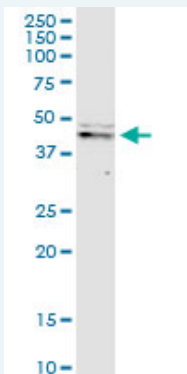
Sandwich ELISA (Recombinant protein)



ELISA

In situ Proximity Ligation Assay (Cell)





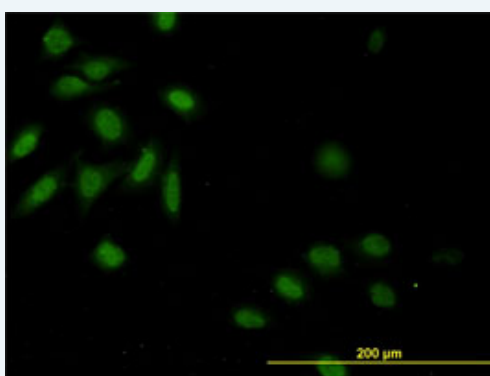
CASP9 monoclonal antibody (M01), clone 3B8-4G2. Western Blot analysis of CASP9 expression in HeLa S3 NE.

[Protocol Download](#)

Western Blot (Recombinant protein)

[Protocol Download](#)

Immunofluorescence

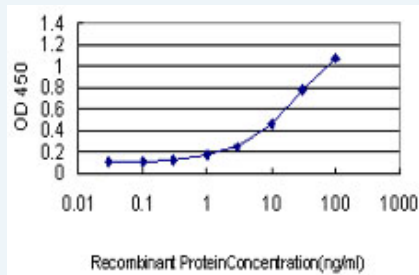


[enlarge this image](#)

Immunofluorescence of monoclonal antibody to CASP9 on HeLa cell. [antibody concentration 10 ug/ml]

[Protocol Download](#)

Sandwich ELISA (Recombinant protein)

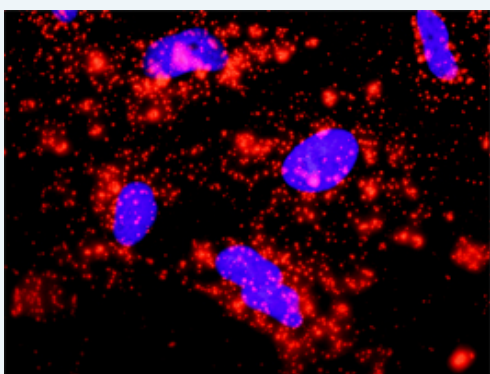


Detection limit for recombinant GST tagged CASP9 is approximately 3ng/ml as a capture antibody.

[Protocol Download](#)

ELISA

In situ Proximity Ligation Assay (Cell)



Proximity Ligation Analysis of protein-protein interactions between XIAP and CASP9. HeLa cells were stained with anti-XIAP rabbit purified polyclonal 1:1200 and anti-CASP9 mouse monoclonal antibody 1:50. Each red dot represents the detection of protein-protein interaction complex, and nuclei were counterstained with DAPI (blue).

Gene Information

Entrez GeneID: [842](#)

GeneBank [BC002452](#)

Accession#:

Protein [AAH02452.1](#)

Accession#:

Gene Name: CASP9

Gene Alias: APAF-3, APAF3, CASPASE-9c, ICE-LAP6, MCH6

Gene Description: caspase 9, apoptosis-related cysteine peptidase

Omim ID: [602234](#)

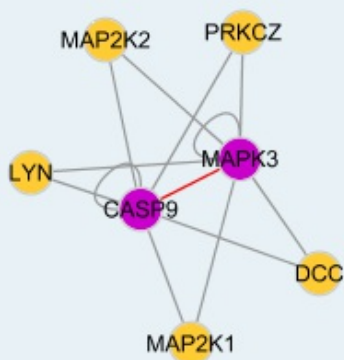
Gene Ontology: [Hyperlink](#)

Gene Summary: This gene encodes a member of the cysteine-aspartic acid protease (caspase) family. Sequential activation of caspases plays a central role in the execution-phase of cell apoptosis. Caspases exist as inactive proenzymes which undergo proteolytic processing at conserved aspartic residues to produce two subunits, large and small, that dimerize to form the active enzyme. This protein is processed by caspase APAF1; this step is thought to be one of the earliest in the caspase activation cascade. Alternative splicing results in two transcript variants which encode different isoforms. [provided by RefSeq]

Other Designations: ICE-like apoptotic protease

6, OTTHUMP0000002322, OTTHUMP0000002323, OTTHUMP00000044594, apoptotic protease MCH-6, apoptotic protease activating factor 3, caspase 9, caspase 9, apoptosis-related cysteine protease

Interactome



Gene Pathway

[Alzheimer's disease](#) [Amyotrophic lateral sclerosis \(ALS\)](#) [Apoptosis](#) [Colorectal cancer](#)
[Endometrial cancer](#) [Huntington's disease](#) [Non-small cell lung cancer](#) [p53 signaling pathway](#)
[Pancreatic cancer](#) [Parkinson's disease](#) [Pathways in cancer](#) [Prostate cancer](#)
[Small cell lung cancer](#) [VEGF signaling pathway](#)

Related Disease

[Adenocarcinoma](#) [Attention Deficit Disorder with Hyperactivity](#) [Autistic Disorder](#)
[Carcinoma, Large Cell](#) [Carcinoma, Non-Small-Cell Lung](#) [Cardiovascular Diseases](#) [Clubfoot](#)
[Colorectal Neoplasms](#) [Crohn Disease](#) [Crohn's disease](#) [Diabetes Mellitus, Type 2](#)
[Disease Progression](#) [Edema](#) [Esophageal Neoplasms](#) [Gastrointestinal Stromal Tumors](#)
[Genetic Predisposition to Disease](#) [Hematologic Diseases](#) [Hepatitis, Toxic](#) [Hodgkin Disease](#)

[... see more](#)

[服務條款](#) | [隱私權政策](#) | [著作及商標](#) | [網站地圖](#)

©2016 亞諾法生技股份有限公司 Abnova Corporation. 版權所有.