



# SZABO SCANDIC

Part of Europa Biosite

## Produktinformation



Forschungsprodukte & Biochemikalien



Zellkultur & Verbrauchsmaterial



Diagnostik & molekulare Diagnostik



Laborgeräte & Service

Weitere Information auf den folgenden Seiten!  
See the following pages for more information!



### Lieferung & Zahlungsart

siehe unsere [Liefer- und Versandbedingungen](#)

### Zuschläge

- Mindermengenzuschlag
- Trockeneiszuschlag
- Gefahrgutzuschlag
- Expressversand

### SZABO-SCANDIC HandelsgmbH

Quellenstraße 110, A-1100 Wien

T. +43(0)1 489 3961-0

F. +43(0)1 489 3961-7

[mail@szabo-scandic.com](mailto:mail@szabo-scandic.com)

[www.szabo-scandic.com](http://www.szabo-scandic.com)

[linkedin.com/company/szaboscandic](https://www.linkedin.com/company/szaboscandic) 



## CASP10 monoclonal antibody (M01), clone 1D8

Catalog # : H00000843-M01

規格 : [ 100 ug ]

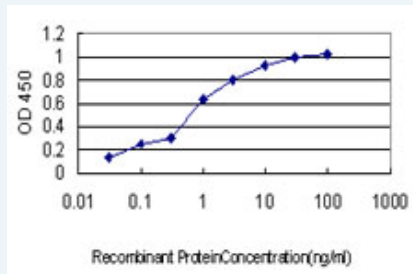
[List All](#)

### Specification


<b>Product Description:</b>	Mouse monoclonal antibody raised against a partial recombinant CASP10.
<b>Immunogen:</b>	CASP10 (NP_116756, 1 a.a. ~ 110 a.a) partial recombinant protein with GST tag. MW of the GST tag alone is 26 KDa.
<b>Sequence:</b>	MKSQGQHWYSSSDKNCKVSVFREKLLIIDSNLGVQDVENLKFLCIGLVPNK KLEKSSASDVFEHLLAEDLLSEEDPFFLAELLYIIRQKLLQHLNCTKEEV ERLLPTRQ
<b>Host:</b>	Mouse
<b>Reactivity:</b>	Human
<b>Isotype:</b>	IgG1 Kappa
<b>Quality Control Testing:</b>	Antibody Reactive Against Recombinant Protein.
<b>Storage Buffer:</b>	In 1x PBS, pH 7.4
<b>Storage Instruction:</b>	Store at -20°C or lower. Aliquot to avoid repeated freezing and thawing.
<b>MSDS:</b>	 <a href="#">Download</a>
<b>Datasheet:</b>	 <a href="#">Download</a>

### Applications

#### Sandwich ELISA (Recombinant protein)



Detection limit for recombinant GST tagged CASP10 is approximately 0.03ng/ml as a capture antibody.

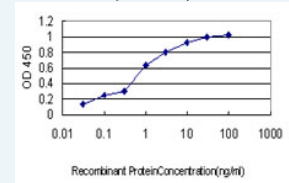
 [Protocol Download](#)

#### ELISA

#### *In situ* Proximity Ligation Assay (Cell)

### Application Image

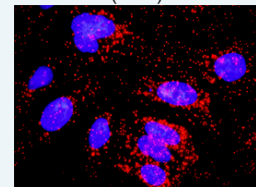
#### Sandwich ELISA (Recombinant protein)




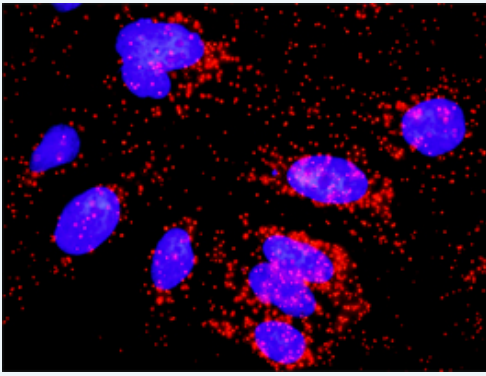
 [enlarge](#)

#### ELISA

#### *In situ* Proximity Ligation Assay (Cell)



 [enlarge](#)



Proximity Ligation Analysis of protein-protein interactions between CFLAR and CASP10. HeLa cells were stained with anti-CFLAR rabbit purified polyclonal 1:1200 and anti-CASP10 mouse monoclonal antibody 1:50. Each red dot represents the detection of protein-protein interaction complex, and nuclei were counterstained with DAPI (blue).

---

### Gene Information

---

**Entrez GeneID:** [843](#)

---

**GeneBank Accession#:** [NM\\_032974](#)

---

**Protein Accession#:** [NP\\_116756](#)

---

**Gene Name:** CASP10

---

**Gene Alias:** ALPS2,FLICE2,MCH4

---

**Gene Description:** caspase 10, apoptosis-related cysteine peptidase

---

**Omim ID:** [137215](#), [601762](#), [603909](#), [605027](#)

---

**Gene Ontology:** [Hyperlink](#)

---

**Gene Summary:** This gene encodes a protein which is a member of the cysteine-aspartic acid protease (caspase) family. Sequential activation of caspases plays a central role in the execution-phase of cell apoptosis. Caspases exist as inactive proenzymes which undergo proteolytic processing at conserved aspartic residues to produce two subunits, large and small, that dimerize to form the active enzyme. This protein cleaves and activates caspases 3 and 7, and the protein itself is processed by caspase 8. Mutations in this gene are associated with apoptosis defects seen in type II autoimmune lymphoproliferative syndrome. Three alternatively spliced transcript variants encoding different isoforms have been described for this gene. [provided by RefSeq]

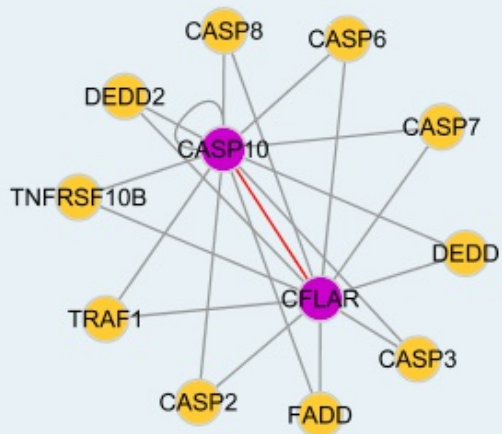
---

**Other Designations:** FADD-like ICE2,Fas-associated death domain protein,ICE-like apoptotic protease 4,apoptotic protease MCH4,caspase 10,caspase 10, apoptosis-related cysteine protease,interleukin-1B-converting enzyme 2

---

### Interactome

---



### Gene Pathway

Apoptosis

### Related Disease

Adenocarcinoma Asthma Asthma Breast cancer Breast Neoplasms  
Bronchial Hyperreactivity Carcinoma, Large Cell Carcinoma, Non-Small-Cell Lung Clubfoot  
Colorectal Neoplasms Disease Progression Esophageal Neoplasms  
Gastrointestinal Stromal Tumors Genetic Predisposition to Disease Hematologic Diseases  
Leukemia Leukemia, chronic myeloid Leukemia, Myelogenous, Chronic, BCR-ABL Positive  
Lung Neoplasms

... see more

[服務條款](#) | [隱私權政策](#) | [著作及商標](#) | [網站地圖](#)

©2016 亞諾法生技股份有限公司 Abnova Corporation. 版權所有.