



# SZABO SCANDIC

Part of Europa Biosite

## Produktinformation



Forschungsprodukte & Biochemikalien



Zellkultur & Verbrauchsmaterial



Diagnostik & molekulare Diagnostik



Laborgeräte & Service

Weitere Information auf den folgenden Seiten!  
See the following pages for more information!



### Lieferung & Zahlungsart

siehe unsere [Liefer- und Versandbedingungen](#)

### Zuschläge

- Mindermengenzuschlag
- Trockeneiszuschlag
- Gefahrgutzuschlag
- Expressversand

### SZABO-SCANDIC HandelsgmbH

Quellenstraße 110, A-1100 Wien

T. +43(0)1 489 3961-0

F. +43(0)1 489 3961-7

[mail@szabo-scandic.com](mailto:mail@szabo-scandic.com)

[www.szabo-scandic.com](http://www.szabo-scandic.com)

[linkedin.com/company/szaboscandic](https://www.linkedin.com/company/szaboscandic) 

## CASP10 monoclonal antibody (M02), clone 2E7

Catalog # : H00000843-M02

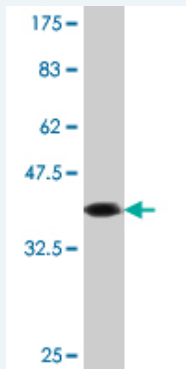
規格 : [ 100 ug ]

[List All](#)

### Specification

<b>Product Description:</b>	Mouse monoclonal antibody raised against a partial recombinant CASP10.
<b>Immunogen:</b>	CASP10 (NP_116756, 1 a.a. ~ 110 a.a) partial recombinant protein with GST tag. MW of the GST tag alone is 26 KDa.
<b>Sequence:</b>	MKSQGHQHWYSSDKNCKVSVFREKLLIIDSNLGVQDVENLKFLCIGLVPNK KLEKSSASDVFEHLLAEDLLSEDPFFLAELLYIIRQKLLQHLNCTKEEV ERLLPTRQ
<b>Host:</b>	Mouse
<b>Reactivity:</b>	Human
<b>Isotype:</b>	IgG2a Kappa

**Quality Control Testing:** Antibody Reactive Against Recombinant Protein.



Western Blot detection against Immunogen (37.84 KDa) .

**Storage Buffer:** In 1x PBS, pH 7.4

**Storage Instruction:** Store at -20°C or lower. Aliquot to avoid repeated freezing and thawing.

**MSDS:** [Download](#)

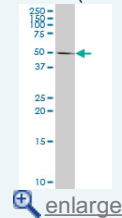
**Datasheet:** [Download](#)

### Applications

Western Blot (Cell lysate)

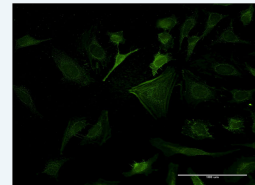
### Application Image

Western Blot (Cell lysate)

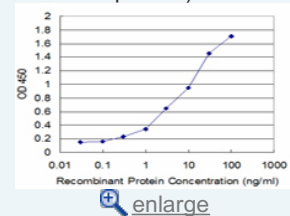


Western Blot (Recombinant protein)

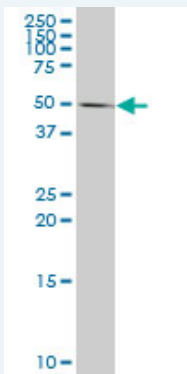
Immunofluorescence



Sandwich ELISA (Recombinant protein)



ELISA



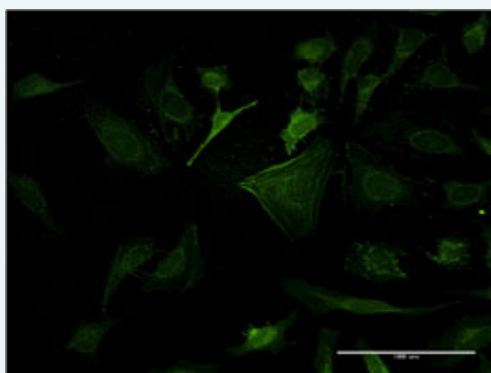
CASP10 monoclonal antibody (M02), clone 2E7. Western Blot analysis of CASP10 expression in U-2 OS ( Cat # L022V1 ).

[Protocol Download](#)

#### Western Blot (Recombinant protein)

[Protocol Download](#)

#### Immunofluorescence

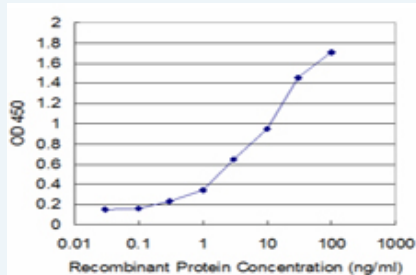


[enlarge this image](#)

Immunofluorescence of monoclonal antibody to CASP10 on HeLa cell . [antibody concentration 10 ug/ml]

[Protocol Download](#)

#### Sandwich ELISA (Recombinant protein)



Detection limit for recombinant GST tagged CASP10 is approximately 0.03ng/ml as a capture antibody.

[Protocol Download](#)

#### ELISA

#### Gene Information

Entrez GeneID: [843](#)

GeneBank [NM\\_032974](#)

Accession#:

Protein [NP\\_116756](#)

Accession#:

Gene Name: CASP10

Gene Alias: ALPS2,FLICE2,MCH4

**Gene** caspase 10, apoptosis-related cysteine peptidase

**Description:**

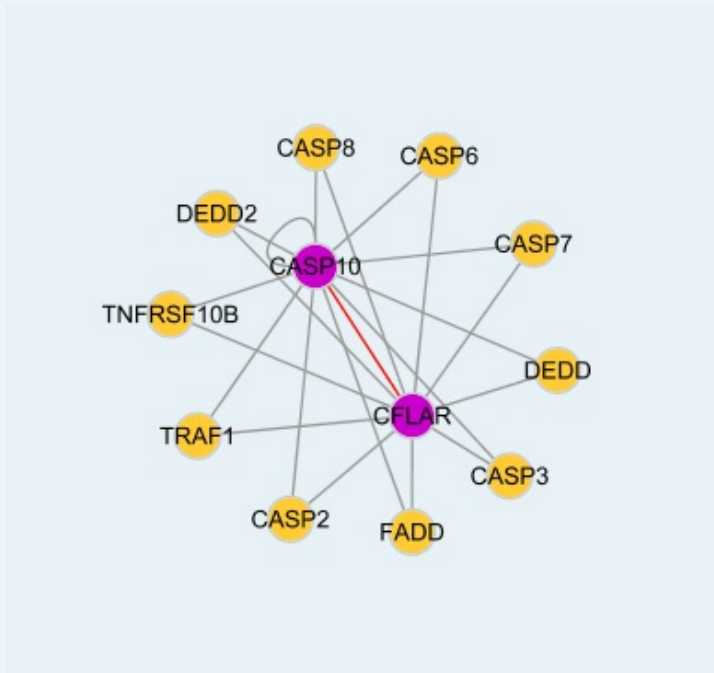
**Omim ID:** [137215](#), [601762](#), [603909](#), [605027](#)

**Gene Ontology:** [Hyperlink](#)

**Gene Summary:** This gene encodes a protein which is a member of the cysteine-aspartic acid protease (caspase) family. Sequential activation of caspases plays a central role in the execution-phase of cell apoptosis. Caspases exist as inactive proenzymes which undergo proteolytic processing at conserved aspartic residues to produce two subunits, large and small, that dimerize to form the active enzyme. This protein cleaves and activates caspases 3 and 7, and the protein itself is processed by caspase 8. Mutations in this gene are associated with apoptosis defects seen in type II autoimmune lymphoproliferative syndrome. Three alternatively spliced transcript variants encoding different isoforms have been described for this gene. [provided by RefSeq]

**Other Designations:** FADD-like ICE2,Fas-associated death domain protein,ICE-like apoptotic protease 4,apoptotic protease MCH-4,caspase 10,caspase 10, apoptosis-related cysteine protease,interleukin-1B-converting enzyme 2

**Interactome**



**Gene Pathway**

[Apoptosis](#)

**Related Disease**

[Adenocarcinoma](#) [Asthma](#) [Asthma](#) [Breast cancer](#) [Breast Neoplasms](#)  
[Bronchial Hyperreactivity](#) [Carcinoma, Large Cell](#) [Carcinoma, Non-Small-Cell Lung](#) [Clubfoot](#)  
[Colorectal Neoplasms](#) [Disease Progression](#) [Esophageal Neoplasms](#)  
[Gastrointestinal Stromal Tumors](#) [Genetic Predisposition to Disease](#) [Hematologic Diseases](#)  
[Leukemia](#) [Leukemia, chronic myeloid](#) [Leukemia, Myelogenous, Chronic, BCR-ABL Positive](#)  
[Lung Neoplasms](#)

... see more

