



SZABO SCANDIC

Part of Europa Biosite

Produktinformation



Forschungsprodukte & Biochemikalien



Zellkultur & Verbrauchsmaterial



Diagnostik & molekulare Diagnostik



Laborgeräte & Service

Weitere Information auf den folgenden Seiten!
See the following pages for more information!



Lieferung & Zahlungsart

siehe unsere [Liefer- und Versandbedingungen](#)

Zuschläge

- Mindermengenzuschlag
- Trockeneiszuschlag
- Gefahrgutzuschlag
- Expressversand

SZABO-SCANDIC HandelsgmbH

Quellenstraße 110, A-1100 Wien

T. +43(0)1 489 3961-0

F. +43(0)1 489 3961-7

mail@szabo-scandic.com

www.szabo-scandic.com

[linkedin.com/company/szaboscandic](https://www.linkedin.com/company/szaboscandic) 

CASQ2 polyclonal antibody (A01)

Catalog # : H00000845-A01

規格 : [50 uL]

List All

Specification

Product Description: Mouse polyclonal antibody raised against a partial recombinant CASQ2.

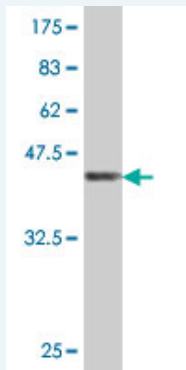
Immunogen: CASQ2 (NP_001223, 21 a.a. ~ 119 a.a) partial recombinant protein with GST tag.

Sequence: EGLNFPTYDGKDRVSLSEKNFKQVLKKYDLLCLYYHEPVSSDKVTPKQ
FQLKEIVLELVAQVLEHKAIGFVMVDAKKEAKLAKKLGFDDEEGSLYILKG

Host: Mouse

Reactivity: Human

Quality Control Testing: Antibody Reactive Against Recombinant Protein.



Western Blot detection against Immunogen (37 KDa) .

Storage Buffer: 50 % glycerol

Storage Instruction: Store at -20°C or lower. Aliquot to avoid repeated freezing and thawing.

MSDS: [Download](#)

Datasheet: [Download](#)

Applications

Western Blot (Recombinant protein)

[Protocol Download](#)

ELISA

Gene Information

Entrez GeneID: [845](#)

GeneBank Accession#: [NM_001232](#)

Application Image

Western Blot (Recombinant protein)

ELISA

Protein [NP_001223](#)

Accession#:

Gene Name: CASQ2

Gene Alias: FLJ26321,FLJ93514,PDIB2

Gene calsequestrin 2 (cardiac muscle)

Description:

Omim ID: [114251](#), [604772](#)

Gene Ontology: [Hyperlink](#)

Gene Summary: The protein encoded by this gene specifies the cardiac muscle family member of the calsequestrin family. Calsequestrin is localized to the sarcoplasmic reticulum in cardiac and slow skeletal muscle cells. The protein is a calcium binding protein that stores calcium for muscle function. Mutations in this gene cause stress-induced polymorphic ventricular tachycardia, also referred to as catecholaminergic polymorphic ventricular tachycardia 2 (CPVT2), a disease characterized by bidirectional ventricular tachycardia that may lead to cardiac arrest. [provided by RefSeq]

Other OTTHUMP00000013749,calsequestrin 2, fast-twitch, cardiac

Designations: muscle,cardiac calsequestrin 2

Related Disease

[Death, Sudden](#)

[服務條款](#) | [隱私權政策](#) | [著作及商標](#) | [網站地圖](#)

©2016 亞諾法生技股份有限公司 Abnova Corporation. 版權所有.