



SZABO SCANDIC

Part of Europa Biosite

Produktinformation



Forschungsprodukte & Biochemikalien



Zellkultur & Verbrauchsmaterial



Diagnostik & molekulare Diagnostik



Laborgeräte & Service

Weitere Information auf den folgenden Seiten!
See the following pages for more information!



Lieferung & Zahlungsart

siehe unsere [Liefer- und Versandbedingungen](#)

Zuschläge

- Mindermengenzuschlag
- Trockeneiszuschlag
- Gefahrgutzuschlag
- Expressversand

SZABO-SCANDIC HandelsgmbH

Quellenstraße 110, A-1100 Wien

T. +43(0)1 489 3961-0

F. +43(0)1 489 3961-7

mail@szabo-scandic.com

www.szabo-scandic.com

[linkedin.com/company/szaboscandic](https://www.linkedin.com/company/szaboscandic) 

CASR purified MaxPab mouse polyclonal antibody (B01P) MaxPab®

Catalog # : H00000846-B01P

規格 : [50 ug]

[List All](#)

Specification

Product Description: Mouse polyclonal antibody raised against a full-length human CASR protein.

Immunogen: CASR (NP_000379.2, 1 a.a. ~ 1078 a.a) full-length human protein.

Sequence:
 MAFYSCCWLLALTWHTSAYGPDQRAQKKGDIIILGGLFPIHFGVAAKDQ
 DLKSRPESVEICIRYNFRGFRWLQAMIFAIEEINSSPALLPNLTLGYRIFDTC
 NTVSKALEATLSFVAQNKIDSLNLDEF CNCSEHIPSTIAVVGATGSGVSTA
 VANLLGLFYIPQVSYASSRLLSNKNQFKSFLRTIPNDEHQATAMADIEYF
 RWNWVGTIAADDDYGRPGIEKFREEAEERDIDFSELISQYSDEEEIQHV
 VEVIQNSTAKVIMVFSGGPDLEPLIKEIVRRNITGKIWLASEAWASSLIAMP
 QYFHVVGGTIGFALKAGQIPGFREFLKKVHPRKSVHNGFAKEFWEETFN
 CHLQEGAKGPLPVDTFLRGHEESGDRFSNSSTAFRPLCTGDENISSVET
 PYIDYTHLRISYNYLAVYSIAHALQDIYTCLPGRGLFTNGSCADIKKVEAW
 QVLKHLRHLNFTNMNGEQVTFDECGDLVGNYSIINWHLSPEDGSMFKEV
 GYYNMYAKKGERLFINEEKILWSGF SREVPF SNCSRDCLAGTRKGIIEGE
 PTCCFECVECPDGEYSDET DASACNKCPDDFWSNENHTSCIAKEIEFLS
 WTEPFGIALTLFAVLGIFLTAFLVGVFIKFRNTPIVKATNRELSYLLLFSL
 CCFSSSLFFIGEPQDWTCLRLRQPAFGISFVLCISCILVKTNRVLLVF EAKIP
 TSFHRKWWGLNLQFLLVFLCTFMQIVCIVWLYTAPPSSYRNQELEDEIIFI
 TCHESLMALGFLIGYTCLLAAICFFF AFKSRKLPENFNEAKFITF SMLIFFI
 WWISIPAYASTYGKFSAVEVIAILAASFLLACIFFNKIYIILFKPSRNTIEE
 VRCSTAAHAFKVAARATLRRSNVSRKRSSSLGGSTGSTPSSSISKSNS
 EDPFPQPERQKQQQPLALTQQEQQQQPLTLPQQQRSQQQPRCKQKVI
 FGGSTVTFSLSFDEPQKNAMAHGNSTHQNSLEAQKSSDTLTRHQPLLPL
 QCGETDLDLTVQETGLQGPVGGDQRPEVEDPEELSPALVSSSQSFVI
 SGGGSTVTENVNS

Host: Mouse

Reactivity: Human

Quality Control Testing: Antibody reactive against mammalian transfected lysate.

Storage Buffer: In 1x PBS, pH 7.4

Storage Instruction: Store at -20°C or lower. Aliquot to avoid repeated freezing and thawing.

MSDS:  [Download](#)

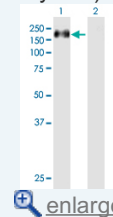
Datasheet:  [Download](#)

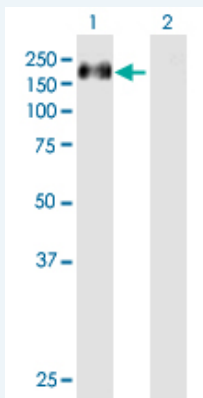
Applications

Western Blot (Transfected lysate)

Application Image

Western Blot (Transfected lysate)





Western Blot analysis of CASR expression in transfected 293T cell line ([H00000846-T01](#)) by CASR MaxPab polyclonal antibody.

Lane 1: CASR transfected lysate(120.60 KDa).
Lane 2: Non-transfected lysate.

 [Protocol Download](#)

Gene Information

Entrez GeneID: [846](#)

GeneBank [NM_000388](#)

Accession#:

Protein [NP_000379.2](#)

Accession#:

Gene Name: CASR

Gene Alias: CAR,FHH,FIH,GPRC2A,HHC,HHC1,MGC138441,NSHPT,PCAR1

Gene calcium-sensing receptor

Description:

Omim ID: [145980](#), [146200](#), [239200](#), [601199](#)

Gene Ontology: [Hyperlink](#)

Gene Summary: The protein encoded by this gene is a G protein-coupled receptor that is expressed in the parathyroid hormone (PTH)-producing chief cells of the parathyroid gland, and the cells lining the kidney tubule. It senses small changes in circulating calcium concentration and couples this information to intracellular signaling pathways that modify PTH secretion or renal cation handling, thus this protein plays an essential role in maintaining mineral ion homeostasis. Mutations in this gene cause familial hypocalciuric hypercalcemia, familial, isolated hypoparathyroidism, and neonatal severe primary hyperparathyroidism. [provided by RefSeq]

Other extracellular calcium-sensing receptor,parathyroid Ca(2+)-sensing
Designations: receptor 1

Related Disease

[Adenoma](#) [Alzheimer Disease](#) [Alzheimer disease](#) [Aortic Valve Stenosis](#) [Atherosclerosis](#)
[Birth Weight](#) [Body Weight](#) [Calcinosis](#) [Calcium Metabolism Disorders](#)
[Cardiovascular Diseases](#) [Cleft Lip](#) [Cleft Palate](#) [Colon cancer](#) [Colonic Neoplasms](#)
[Colorectal Neoplasms](#) [Coronary Disease](#) [Diabetes Complications](#) [Diabetes Mellitus, Type 2](#)
[Disease Progression](#)

... see more

