



SZABO SCANDIC

Part of Europa Biosite

Produktinformation



Forschungsprodukte & Biochemikalien



Zellkultur & Verbrauchsmaterial



Diagnostik & molekulare Diagnostik



Laborgeräte & Service

Weitere Information auf den folgenden Seiten!
See the following pages for more information!



Lieferung & Zahlungsart

siehe unsere [Liefer- und Versandbedingungen](#)

Zuschläge

- Mindermengenzuschlag
- Trockeneiszuschlag
- Gefahrgutzuschlag
- Expressversand

SZABO-SCANDIC HandelsgmbH

Quellenstraße 110, A-1100 Wien

T. +43(0)1 489 3961-0

F. +43(0)1 489 3961-7

mail@szabo-scandic.com

www.szabo-scandic.com

[linkedin.com/company/szaboscandic](https://www.linkedin.com/company/szaboscandic) 

CASR monoclonal antibody (M01), clone 3F12

Catalog # : H00000846-M01

規格 : [100 ug]

[List All](#)

Specification

Product Description: Mouse monoclonal antibody raised against a partial recombinant CASR.

Immunogen: CASR (NP_000379, 21 a.a. ~ 120 a.a) partial recombinant protein with GST tag. MW of the GST tag alone is 26 KDa.

Sequence: GPDQRAQKKGDIILGGLFPIHFGVAAKDQDLKSRPESVEECIRYNFRGFR
WLQAMIFAIEEINSSPALLPNLTLGYRIFDTCNTVSKALEATLSFVAQNKI

Host: Mouse

Reactivity: Human

Isotype: IgG2a Kappa

Quality Control Testing: Antibody Reactive Against Recombinant Protein.

Storage Buffer: In 1x PBS, pH 7.4

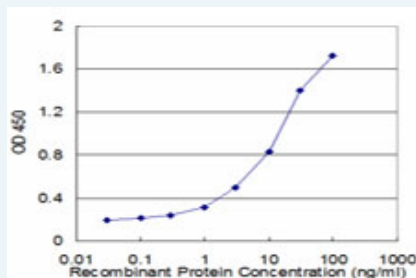
Storage Instruction: Store at -20°C or lower. Aliquot to avoid repeated freezing and thawing.

MSDS:  [Download](#)

Datasheet:  [Download](#)

Applications

Sandwich ELISA (Recombinant protein)



Detection limit for recombinant GST tagged CASR is approximately 0.3ng/ml as a capture antibody.

 [Protocol Download](#)

ELISA

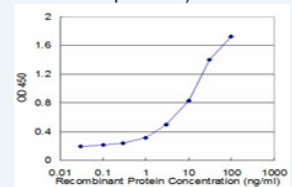
Gene Information


Entrez GeneID: [846](#)

GeneBank Accession#: [NM_000388](#)

Application Image

Sandwich ELISA (Recombinant protein)



 [enlarge](#)

ELISA

Protein [NP_000379](#)

Accession#:

Gene Name: CASR

Gene Alias: CAR,FHH,FIH,GPRC2A,HHC,HHC1,MGC138441,NSHPT,PCAR1

Gene Description: calcium-sensing receptor

Omim ID: [145980](#), [146200](#), [239200](#), [601199](#)

Gene Ontology: [Hyperlink](#)

Gene Summary: The protein encoded by this gene is a G protein-coupled receptor that is expressed in the parathyroid hormone (PTH)-producing chief cells of the parathyroid gland, and the cells lining the kidney tubule. It senses small changes in circulating calcium concentration and couples this information to intracellular signaling pathways that modify PTH secretion or renal cation handling, thus this protein plays an essential role in maintaining mineral ion homeostasis. Mutations in this gene cause familial hypocalciuric hypercalcemia, familial, isolated hypoparathyroidism, and neonatal severe primary hyperparathyroidism. [provided by RefSeq]

Other Designations: extracellular calcium-sensing receptor,parathyroid Ca(2+)-sensing receptor 1

Related Disease

[Adenoma](#) [Alzheimer Disease](#) [Alzheimer disease](#) [Aortic Valve Stenosis](#) [Atherosclerosis](#)
[Birth Weight](#) [Body Weight](#) [Calcinosis](#) [Calcium Metabolism Disorders](#)
[Cardiovascular Diseases](#) [Cleft Lip](#) [Cleft Palate](#) [Colon cancer](#) [Colonic Neoplasms](#)
[Colorectal Neoplasms](#) [Coronary Disease](#) [Diabetes Complications](#) [Diabetes Mellitus, Type 2](#)
[Disease Progression](#)

... see more

[服務條款](#) | [隱私權政策](#) | [著作及商標](#) | [網站地圖](#)

©2016 亞諾法生技股份有限公司 Abnova Corporation. 版權所有.