

## CASR 293T Cell Transient Overexpression Lysate(Denatured)

Catalog # : H00000846-T01

規格 : [ 100 uL ]

List All

### Specification

**Transfected Cell Line:** 293T

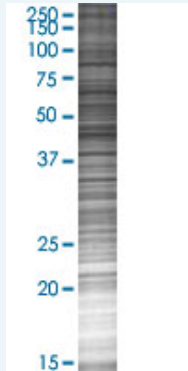
**Plasmid:** pCMV-CASR full-length

**Host:** Human

**Theoretical MW (kDa):** 120.6

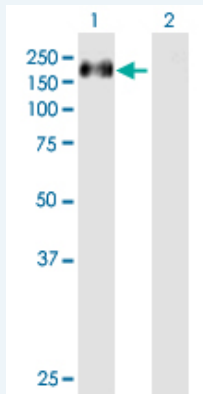
**Quality Control Testing:** Transient overexpression cell lysate was tested with Anti-CASR antibody (H00000846-B01P) by Western Blots.

#### SDS-PAGE Gel



CASR transfected lysate.

#### Western Blot



Lane 1: CASR transfected lysate ( 120.6 KDa)

Lane 2: Non-transfected lysate.

**Storage Buffer:** 1X Sample Buffer (50 mM Tris-HCl, 2% SDS, 10% glycerol, 300 mM 2-mercaptoethanol, 0.01% Bromophenol blue)

**Storage Instruction:** Store at -80°C. Aliquot to avoid repeated freezing and thawing.

**MSDS:**  [Download](#)

### Applications

### Application Image

Western Blot

## Western Blot

### Gene Information

Entrez GeneID: [846](#)

GeneBank Accession#: [NM\\_000388](#)

Protein Accession#: [NP\\_000379.2](#)

Gene Name: CASR

Gene Alias: CAR, FHH, FIH, GPRC2A, HHC, HHC1, MGC138441, NSHPT, PCAR1

Gene Description: calcium-sensing receptor

Omim ID: [145980](#), [146200](#), [239200](#), [601199](#)

Gene Ontology: [Hyperlink](#)

**Gene Summary:** The protein encoded by this gene is a G protein-coupled receptor that is expressed in the parathyroid hormone (PTH)-producing chief cells of the parathyroid gland, and the cells lining the kidney tubule. It senses small changes in circulating calcium concentration and couples this information to intracellular signaling pathways that modify PTH secretion or renal cation handling, thus this protein plays an essential role in maintaining mineral ion homeostasis. Mutations in this gene cause familial hypocalciuric hypercalcemia, familial, isolated hypoparathyroidism, and neonatal severe primary hyperparathyroidism. [provided by RefSeq]

Other Designations: extracellular calcium-sensing receptor, parathyroid Ca(2+)-sensing receptor 1

### Related Disease

[Adenoma](#) [Alzheimer Disease](#) [Alzheimer disease](#) [Aortic Valve Stenosis](#) [Atherosclerosis](#)  
[Birth Weight](#) [Body Weight](#) [Calcinosis](#) [Calcium Metabolism Disorders](#)  
[Cardiovascular Diseases](#) [Cleft Lip](#) [Cleft Palate](#) [Colon cancer](#) [Colonic Neoplasms](#)  
[Colorectal Neoplasms](#) [Coronary Disease](#) [Diabetes Complications](#) [Diabetes Mellitus, Type 2](#)  
[Disease Progression](#)

... see more