



SZABO SCANDIC

Part of Europa Biosite

Produktinformation



Forschungsprodukte & Biochemikalien



Zellkultur & Verbrauchsmaterial



Diagnostik & molekulare Diagnostik



Laborgeräte & Service

Weitere Information auf den folgenden Seiten!
See the following pages for more information!



Lieferung & Zahlungsart

siehe unsere [Liefer- und Versandbedingungen](#)

Zuschläge

- Mindermengenzuschlag
- Trockeneiszuschlag
- Gefahrgutzuschlag
- Expressversand

SZABO-SCANDIC HandelsgmbH

Quellenstraße 110, A-1100 Wien

T. +43(0)1 489 3961-0

F. +43(0)1 489 3961-7

mail@szabo-scandic.com

www.szabo-scandic.com

[linkedin.com/company/szaboscandic](https://www.linkedin.com/company/szaboscandic) 

CAT polyclonal antibody (A01)

Catalog # : H00000847-A01

規格 : [50 uL]

List All

Specification

Product Description: Mouse polyclonal antibody raised against a partial recombinant CAT.

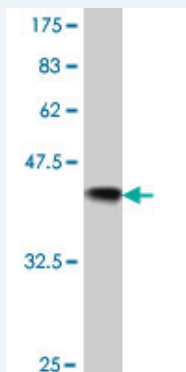
Immunogen: CAT (NP_001743, 1 a.a. ~ 100 a.a) partial recombinant protein with GST tag.

Sequence: MADSRDPASDQMQRHWKEQRAAQKADVLTTGAGNPVGDKLNIVTVGPR
GPLLVQDVVFTDEMAHFDRERIPERVHAKGAGAFGYFEVTHDITKYSK
AKVF

Host: Mouse

Reactivity: Human

Quality Control Testing: Antibody Reactive Against Recombinant Protein.



Western Blot detection against Immunogen (37.11 kDa) .

Storage Buffer: 50 % glycerol

Storage Instruction: Store at -20°C or lower. Aliquot to avoid repeated freezing and thawing.

MSDS: [Download](#)

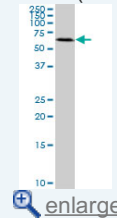
Datasheet: [Download](#)

Applications

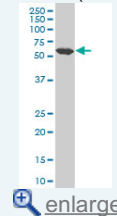
Western Blot (Cell lysate)

Application Image

Western Blot (Cell lysate)

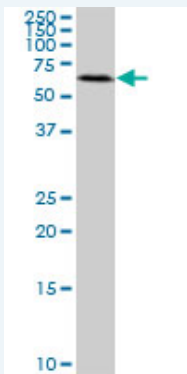


Western Blot (Cell lysate)




Western Blot (Recombinant protein)

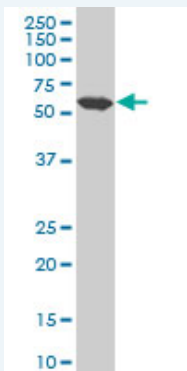
ELISA



CAT polyclonal antibody (A01), Lot # ABNOVA060623QCS1. Western Blot analysis of CAT expression in Y-79.

 [Protocol Download](#)


Western Blot (Cell lysate)



CAT polyclonal antibody (A01), Lot # 050921JC01 Western Blot analysis of CAT expression in A-431 (Cat # L015V1).

 [Protocol Download](#)

Western Blot (Recombinant protein)

 [Protocol Download](#)

ELISA

Gene Information

Entrez GeneID: [847](#)

GeneBank [NM_001752](#)
Accession#:

Protein [NP_001743](#)
Accession#:

Gene Name: CAT

Gene Alias: MGC138422,MGC138424

Gene catalase
Description:

Omim ID: [115500](#)

Gene Ontology: [Hyperlink](#)

Other -
Designations:

Gene Pathway

[Amyotrophic lateral sclerosis \(ALS\)](#) [Metabolic pathways](#) [Methane metabolism](#)
[Tryptophan metabolism](#)

Related Disease

[Absenteeism](#) [Acute Disease](#) [Albuminuria](#) [Alcoholism](#) [Alzheimer Disease](#) [Alzheimer disease](#)
[Arsenic Poisoning](#) [Arthritis, Rheumatoid](#) [Asbestosis](#) [Asthma](#) [Asthma](#) [Brain Neoplasms](#)
[Breast cancer](#) [Breast Neoplasms](#) [Carcinoma, Basal Cell](#) [Carcinoma, Ductal, Breast](#)
[Carcinoma, Hepatocellular](#) [Carcinoma, Lobular](#) [Carcinoma, Squamous Cell](#)

... see more

[服務條款](#) | [隱私權政策](#) | [著作及商標](#) | [網站地圖](#)

©2016 亞諾法生技股份有限公司 Abnova Corporation. 版權所有.