



SZABO SCANDIC

Part of Europa Biosite

Produktinformation



Forschungsprodukte & Biochemikalien



Zellkultur & Verbrauchsmaterial



Diagnostik & molekulare Diagnostik



Laborgeräte & Service

Weitere Information auf den folgenden Seiten!
See the following pages for more information!



Lieferung & Zahlungsart

siehe unsere [Liefer- und Versandbedingungen](#)

Zuschläge

- Mindermengenzuschlag
- Trockeneiszuschlag
- Gefahrgutzuschlag
- Expressversand

SZABO-SCANDIC HandelsgmbH

Quellenstraße 110, A-1100 Wien

T. +43(0)1 489 3961-0

F. +43(0)1 489 3961-7

mail@szabo-scandic.com

www.szabo-scandic.com

[linkedin.com/company/szaboscandic](https://www.linkedin.com/company/szaboscandic) 

CAT purified MaxPab rabbit polyclonal antibody (D01P) MaxPab®

Catalog # : H00000847-D01P

規格 : [100 ug]

[List All](#)

Specification

Product Description: Rabbit polyclonal antibody raised against a full-length human CAT protein.

Immunogen: CAT (NP_001743.1, 1 a.a. ~ 527 a.a) full-length human protein.

Sequence:
MADSRDPASDQMQRHWKEQRAAQKADVLTTGAGNPVGDKLNMITVGPR
GPLLVQDVVFTDEMAHFDREIPERVHAKGAGAFGYFEVTHDITKYSK
AKVFEHIGKKTPIAVRFSTVAGESGSADTVRDPRGFVAVKFYTEDGNWDL
VGNNTPIFFIRDPILPFSFIHSQKRNPQTHLKDPDMVWDFWSLRPESLHQ
VSFLFSDRGIPDGHHRMNGYGSHTFKLVNANGEAVYCKFHKTQDGKIN
LSVEDAARLSQEDPDYGIRDLFNAIATGKYPSTWTFYIQVMTFNQAETFPF
NPFDLTKVWPHKDYPLIPVGLVLRNRPVNYFAEVEQIAFDPSNMPPGIEA
SPDKMLQGRLFAYPDTHRHRLGPNYLHIPVNCYPYRVRVANYQRDGPIC
MQDNQGGAPNYPNPNSFGAPEQQPSALEHSIQYSGEVRRFNTANDDMVT
QVRAFVYVNVLNNEEQKRLCENIAGHLKDAQIFIQKKAIVNFTEVHPDYGS
HIQALLDKYNAEKPKNAIHTFVQSGSHLAAREKANL

Host: Rabbit

Reactivity: Human, Mouse

Quality Control Testing: Antibody reactive against mammalian transfected lysate.

Storage Buffer: In 1x PBS, pH 7.4

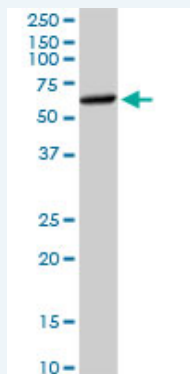
Storage Instruction: Store at -20°C or lower. Aliquot to avoid repeated freezing and thawing.

MSDS:  [Download](#)

Datasheet:  [Download](#)

Applications

Western Blot (Tissue lysate)

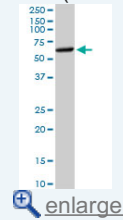


CAT MaxPab rabbit polyclonal antibody. Western Blot analysis of CAT expression in human liver.

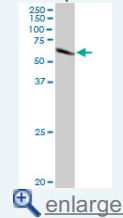
 [Protocol Download](#)

Application Image

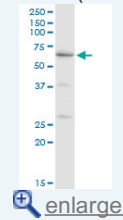
Western Blot (Tissue lysate)



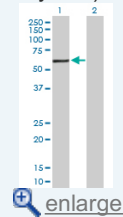
Western Blot (Tissue lysate)



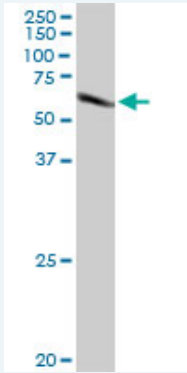
Western Blot (Cell lysate)



Western Blot (Transfected lysate)



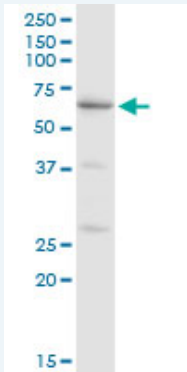
Western Blot (Tissue lysate)



CAT MaxPab rabbit polyclonal antibody. Western Blot analysis of CAT expression in mouse liver.

 [Protocol Download](#)

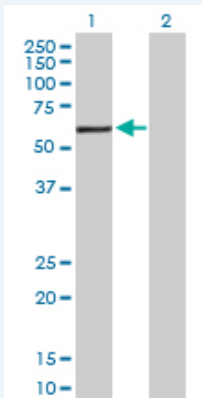
Western Blot (Cell lysate)



CAT MaxPab rabbit polyclonal antibody. Western Blot analysis of CAT expression in A-431.

 [Protocol Download](#)

Western Blot (Transfected lysate)



Western Blot analysis of CAT expression in transfected 293T cell line ([H00000847-T01](#)) by CAT MaxPab polyclonal antibody.

Lane 1: CAT transfected lysate(59.80 KDa).

Lane 2: Non-transfected lysate.

 [Protocol Download](#)

Gene Information

Entrez GeneID: [847](#)

GeneBank [NM_001752.2](#)
Accession#:

Protein [NP_001743.1](#)
Accession#:

Gene Name: CAT

Gene Alias: MGC138422,MGC138424

Gene catalase

Description:

Omim ID: [115500](#)

Gene Ontology: [Hyperlink](#)

Other Designations: -

Gene Pathway

[Amyotrophic lateral sclerosis \(ALS\)](#) [Metabolic pathways](#) [Methane metabolism](#)
[Tryptophan metabolism](#)

Related Disease

[Absenteeism](#) [Acute Disease](#) [Albuminuria](#) [Alcoholism](#) [Alzheimer Disease](#) [Alzheimer disease](#)
[Arsenic Poisoning](#) [Arthritis, Rheumatoid](#) [Asbestosis](#) [Asthma](#) [Asthma](#) [Brain Neoplasms](#)
[Breast cancer](#) [Breast Neoplasms](#) [Carcinoma, Basal Cell](#) [Carcinoma, Ductal, Breast](#)
[Carcinoma, Hepatocellular](#) [Carcinoma, Lobular](#) [Carcinoma, Squamous Cell](#)

... see more

[服務條款](#) | [隱私權政策](#) | [著作及商標](#) | [網站地圖](#)

©2016 亞諾法生技股份有限公司 Abnova Corporation. 版權所有.