



SZABO SCANDIC

Part of Europa Biosite

Produktinformation



Forschungsprodukte & Biochemikalien



Zellkultur & Verbrauchsmaterial



Diagnostik & molekulare Diagnostik



Laborgeräte & Service

Weitere Information auf den folgenden Seiten!
See the following pages for more information!



Lieferung & Zahlungsart

siehe unsere [Liefer- und Versandbedingungen](#)

Zuschläge

- Mindermengenzuschlag
- Trockeneiszuschlag
- Gefahrgutzuschlag
- Expressversand

SZABO-SCANDIC HandelsgmbH

Quellenstraße 110, A-1100 Wien

T. +43(0)1 489 3961-0

F. +43(0)1 489 3961-7

mail@szabo-scandic.com

www.szabo-scandic.com

[linkedin.com/company/szaboscandic](https://www.linkedin.com/company/szaboscandic) 

CAV1 293T Cell Transient Overexpression Lysate(Denatured)

Catalog # : H00000857-T03

規格 : [100 uL]

List All

Specification

Transfected Cell Line: 293T

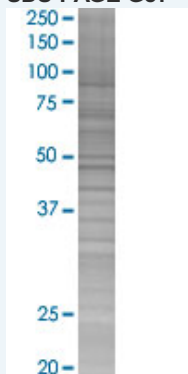
Plasmid: pCMV-CAV1 full-length

Host: Human

Theoretical MW (kDa): 20.5

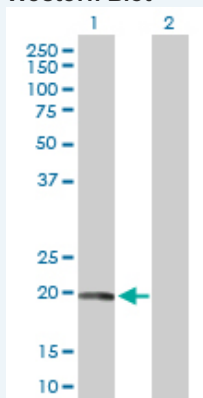
Quality Control Testing: Transient overexpression cell lysate was tested with Anti-CAV1 antibody (H00000857-D01P) by Western Blots.

SDS-PAGE Gel



CAV1 transfected lysate.

Western Blot



Lane 1: CAV1 transfected lysate (20.50 KDa)

Lane 2: Non-transfected lysate.

Storage Buffer: 1X Sample Buffer (50 mM Tris-HCl, 2% SDS, 10% glycerol, 300 mM 2-mercaptoethanol, 0.01% Bromophenol blue)

Storage Instruction: Store at -80°C. Aliquot to avoid repeated freezing and thawing.

MSDS:  [Download](#)

Applications

Application Image

Western Blot

Western Blot

Gene Information

Entrez GeneID: [857](#)

GeneBank Accession#: [NM_001753.3](#)

Protein Accession#: [AAH82246.1](#)

Gene Name: CAV1

Gene Alias: BSCL3,CAV,CGL3,MSTP085,VIP21

Gene Description: caveolin 1, caveolae protein, 22kDa

Omim ID: [601047](#)

Gene Ontology: [Hyperlink](#)

Gene Summary: The scaffolding protein encoded by this gene is the main component of the caveolae plasma membranes found in most cell types. The protein links integrin subunits to the tyrosine kinase FYN, an initiating step in coupling integrins to the Ras-ERK pathway and promoting cell cycle progression. The gene is a tumor suppressor gene candidate and a negative regulator of the Ras-p42/44 MAP kinase cascade. CAV1 and CAV2 are located next to each other on chromosome 7 and express colocalizing proteins that form a stable hetero-oligomeric complex. By using alternative initiation codons in the same reading frame, two isoforms (alpha and beta) are encoded by a single transcript from this gene. [provided by RefSeq]

Other Designations: OTTHUMP00000025031,caveolae protein, 22-kD,caveolin 1,caveolin 1 caveolae protein, 22kD,caveolin 1, alpha isoform,caveolin 1, beta isoform,caveolin-1 beta isoform protein,cell growth-inhibiting protein 32

Gene Pathway

[Focal adhesion](#)

Related Disease

[Alzheimer Disease](#) [Alzheimer disease](#) [Amyotrophic Lateral Sclerosis](#)
[Amyotrophic lateral sclerosis](#) [Anoxia](#) [Arrhythmias](#), [Cardiac Atherosclerosis](#) [Atrial Fibrillation](#)
[Atrioventricular Block](#) [Breast Neoplasms](#) [Calcinosis](#) [Carcinoma](#) [Cardiovascular Diseases](#)
[Colorectal Neoplasms](#) [Coronary Artery Disease](#) [Diabetes Mellitus, Type 2](#) [Edema](#) [Fibrosis](#)
[Genetic Predisposition to Disease](#)

... see more