



SZABO SCANDIC

Part of Europa Biosite

Produktinformation



Forschungsprodukte & Biochemikalien



Zellkultur & Verbrauchsmaterial



Diagnostik & molekulare Diagnostik



Laborgeräte & Service

Weitere Information auf den folgenden Seiten!
See the following pages for more information!



Lieferung & Zahlungsart

siehe unsere [Liefer- und Versandbedingungen](#)

Zuschläge

- Mindermengenzuschlag
- Trockeneiszuschlag
- Gefahrgutzuschlag
- Expressversand

SZABO-SCANDIC HandelsgmbH

Quellenstraße 110, A-1100 Wien

T. +43(0)1 489 3961-0

F. +43(0)1 489 3961-7

mail@szabo-scandic.com

www.szabo-scandic.com

[linkedin.com/company/szaboscandic](https://www.linkedin.com/company/szaboscandic) 

CAV3 polyclonal antibody (A01)

Catalog # : H00000859-A01

規格 : [50 uL]

[List All](#)

Specification

Product Description: Mouse polyclonal antibody raised against a partial recombinant CAV3.

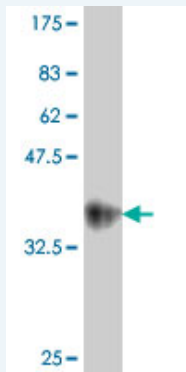
Immunogen: CAV3 (NP_001225, 1 a.a. ~ 83 a.a) partial recombinant protein with GST tag.

Sequence: MMAEEHTDLEAQIVKDIHCKEIDLVNRDPKNINEDIVKVFDFEDVIAEPVGTYSFDGWWKVSYYTFTVSKYWCYRLLSTLLGVP

Host: Mouse

Reactivity: Human

Quality Control Testing: Antibody Reactive Against Recombinant Protein.



Western Blot detection against Immunogen (35.24 KDa) .

Storage Buffer: 50 % glycerol

Storage Instruction: Store at -20°C or lower. Aliquot to avoid repeated freezing and thawing.

MSDS: [Download](#)

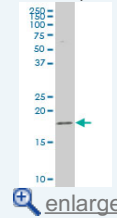
Datasheet: [Download](#)

Applications

Western Blot (Cell lysate)

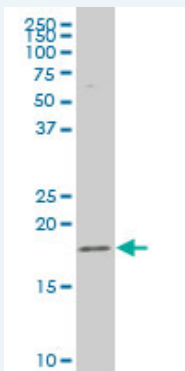
Application Image

Western Blot (Cell lysate)



Western Blot (Recombinant protein)


ELISA



CAV3 polyclonal antibody (A01), Lot # 051108JC01 Western Blot analysis of CAV3 expression in SJCRH30 (Cat # L027V1).

 [Protocol Download](#)

Western Blot (Recombinant protein)

 [Protocol Download](#)

ELISA

Gene Information

Entrez GeneID: [859](#)

GeneBank [NM_001234](#)

Accession#:

Protein [NP_001225](#)

Accession#:

Gene Name: CAV3

Gene Alias: LGMD1C,LQT9,MGC126100,MGC126101,MGC126129,VIP-21,VIP21

Gene caveolin 3

Description:

Omim ID: [123320](#), [192600](#), [601253](#), [606072](#), [607801](#)

Gene Ontology: [Hyperlink](#)

Gene Summary: This gene encodes a caveolin family member, which functions as a component of the caveolae plasma membranes found in most cell types. Caveolin proteins are proposed to be scaffolding proteins for organizing and concentrating certain caveolin-interacting molecules. Mutations identified in this gene lead to interference with protein oligomerization or intra-cellular routing, disrupting caveolae formation and resulting in Limb-Girdle muscular dystrophy type-1C (LGMD-1C), hyperCKemia or rippling muscle disease (RMD). Alternative splicing has been identified for this locus, with inclusion or exclusion of a differentially spliced intron. In addition, transcripts utilize multiple polyA sites and contain two potential translation initiation sites. [provided by RefSeq]

Other M-caveolin

Designations:

Gene Pathway

[Focal adhesion](#)

Related Disease

[Arrhythmia](#) [Cardiovascular Diseases](#) [Diabetes Mellitus, Type 2](#) [Edema](#) [Liver Cirrhosis](#)
[Long QT Syndrome](#) [Long QT syndrome](#) [Sudden Infant Death](#)

[服務條款](#) | [隱私權政策](#) | [著作及商標](#) | [網站地圖](#)

©2016 亞諾法生技股份有限公司 Abnova Corporation. 版權所有.