



SZABO SCANDIC

Part of Europa Biosite

Produktinformation



Forschungsprodukte & Biochemikalien



Zellkultur & Verbrauchsmaterial



Diagnostik & molekulare Diagnostik



Laborgeräte & Service

Weitere Information auf den folgenden Seiten!
See the following pages for more information!



Lieferung & Zahlungsart

siehe unsere [Liefer- und Versandbedingungen](#)

Zuschläge

- Mindermengenzuschlag
- Trockeneiszuschlag
- Gefahrgutzuschlag
- Expressversand

SZABO-SCANDIC HandelsgmbH

Quellenstraße 110, A-1100 Wien

T. +43(0)1 489 3961-0

F. +43(0)1 489 3961-7

mail@szabo-scandic.com

www.szabo-scandic.com

[linkedin.com/company/szaboscandic](https://www.linkedin.com/company/szaboscandic) 

RUNX2 purified MaxPab mouse polyclonal antibody (B02P) MaxPab®

Catalog # : H00000860-B02P

規格 : [50 ug]

List All

Specification

Product Description: Mouse polyclonal antibody raised against a full-length human RUNX2 protein.

Immunogen: RUNX2 (AAI60022.1, 1 a.a. ~ 507 a.a) full-length human protein.

Sequence:
 MRIPVDPSTSRRFSPSSSLQPGKMSDVSPVAAQQQQQQQQQQQQ
 QQQQQQQQQQEAAAAAAAAAAAAAAAAAVPRLRPPHDNRTMVEIID
 HPAELVRTDSPNFLCSVLPSHWRCNKTLPVAFKVALGEVPDGTVVTVM
 AGNDENYSAELRNASAVMKNQVARFNDRFVGRSGRGKSFLLTITVFTN
 PPQVATYHRAIKVTVDGPREPRRHRQKLDSDKPSLFSDRLSDLGRIPHPS
 MRVGVPPQNPRPSLNSAPSPFNPPQGSQITDPRQAQSSPPWSYDQSYP
 SYLSQMTSPSIHSTTPLSSTRGTGLPAITDVPRRISDDDTATSDFCLWPS
 TSKKSQAGASELGPFSDFPRQFSPSSLTESRFSNPRMHYPATFTYTPP
 VTSGMSLGMSTHYHTYLPPYPGSSQSQSGPFQTSSTPYLYGTSS
 GSYQFPMVPGGDRSPSRMLPPCTTTSNGSTLLNPNLNPQNDGVDADG
 SHSSSPTVLNSSGRMDESVMWRPY

Host: Mouse

Reactivity: Human

Quality Control Testing: Antibody reactive against mammalian transfected lysate.

Storage Buffer: In 1x PBS, pH 7.4

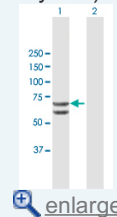
Storage Instruction: Store at -20°C or lower. Aliquot to avoid repeated freezing and thawing.

MSDS:  [Download](#)

Datasheet:  [Download](#)

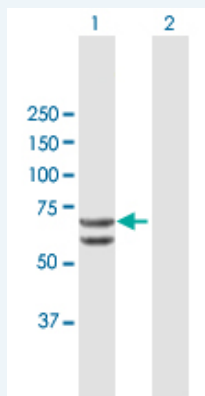
Application Image

Western Blot (Transfected lysate)



Applications

Western Blot (Transfected lysate)



Western Blot analysis of RUNX2 expression in transfected 293T cell line (H00000860-T02) by RUNX2 MaxPab polyclonal antibody.

Lane 1: RUNX2 transfected lysate(55.77 KDa).

Gene Information

Entrez GeneID: [860](#)

GeneBank Accession#: [BC160022.1](#)

Protein Accession#: [AAI60022.1](#)

Gene Name: RUNX2

Gene Alias: AML3,CBFA1,CCD,CCD1,MGC120022,MGC120023,OSF2,PEA2aA,PEBP2A1,PEBP2A2,PEBP2aA,PEBP2aA1

Gene Description: runt-related transcription factor 2

Omim ID: [119600](#), [600211](#)

Gene Ontology: [Hyperlink](#)

Gene Summary: This gene is a member of the RUNX family of transcription factors and encodes a nuclear protein with an Runt DNA-binding domain. This protein is essential for osteoblastic differentiation and skeletal morphogenesis and acts as a scaffold for nucleic acids and regulatory factors involved in skeletal gene expression. The protein can bind DNA both as a monomer or, with more affinity, as a subunit of a heterodimeric complex. Mutations in this gene have been associated with the bone development disorder cleidocranial dysplasia (CCD). Transcript variants that encode different protein isoforms result from the use of alternate promoters as well as alternate splicing. [provided by RefSeq]

Other Designations: CBF-alpha 1,OTTHUMP00000016533,SL3-3 enhancer factor 1 alpha A subunit,SL3/AKV core-binding factor alpha A subunit,acute myeloid leukemia 3 protein,core-binding factor, runt domain, alpha subunit 1,osteoblast-specific transcription factor 2,polyomavirus e

Related Disease

[Alzheimer Disease](#) [Alzheimer disease](#) [Bone Diseases](#) [Cardiovascular Diseases](#) [Cleft Lip Cleft Palate](#) [Cleidocranial Dysplasia](#) [Diabetes Complications](#) [Diabetes Mellitus, Type 2](#) [Fractures, Bone](#) [Genetic Predisposition to Disease](#) [Metabolic Syndrome X](#) [Neoplasms](#) [Ossification of Posterior Longitudinal Ligament](#) [Osteoporosis](#) [Tobacco Use Disorder](#)