



SZABO SCANDIC

Part of Europa Biosite

Produktinformation



Forschungsprodukte & Biochemikalien



Zellkultur & Verbrauchsmaterial



Diagnostik & molekulare Diagnostik



Laborgeräte & Service

Weitere Information auf den folgenden Seiten!
See the following pages for more information!



Lieferung & Zahlungsart

siehe unsere [Liefer- und Versandbedingungen](#)

Zuschläge

- Mindermengenzuschlag
- Trockeneiszuschlag
- Gefahrgutzuschlag
- Expressversand

SZABO-SCANDIC HandelsgmbH

Quellenstraße 110, A-1100 Wien

T. +43(0)1 489 3961-0

F. +43(0)1 489 3961-7

mail@szabo-scandic.com

www.szabo-scandic.com

[linkedin.com/company/szaboscandic](https://www.linkedin.com/company/szaboscandic) 

RUNX2 monoclonal antibody (M03), clone 1C10

Catalog # : H00000860-M03

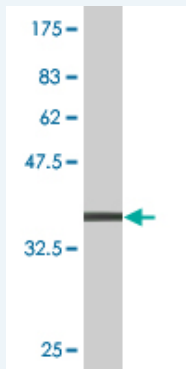
規格 : [100 ug]

[List All](#)

Specification

Product Description:	Mouse monoclonal antibody raised against a partial recombinant RUNX2.
Immunogen:	RUNX2 (NP_004339, 251 a.a. ~ 350 a.a) partial recombinant protein with GST tag. MW of the GST tag alone is 26 KDa.
Sequence:	NPRPSLNSAPSPFNPGGQSQITDPRQAQSSPPWSYDQSYPSYLSQMTS PSIHSTTPLSSTRGTGLPAITDVPRRISDDDTATSDFCLWPSTLSKKSQA GA
Host:	Mouse
Reactivity:	Human
Isotype:	IgG2a Kappa

Quality Control Testing: Antibody Reactive Against Recombinant Protein.



Western Blot detection against Immunogen (36.74 KDa) .

Storage Buffer: In 1x PBS, pH 7.4

Storage Instruction: Store at -20°C or lower. Aliquot to avoid repeated freezing and thawing.

MSDS: [Download](#)

Datasheet: [Download](#)

Applications

Western Blot (Recombinant protein)

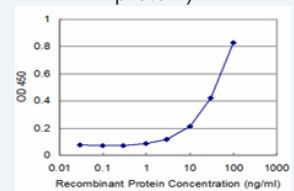
[Protocol Download](#)

Sandwich ELISA (Recombinant protein)

Application Image

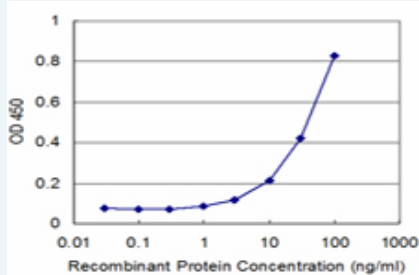
Western Blot (Recombinant protein)

Sandwich ELISA (Recombinant protein)



[enlarge](#)

ELISA



Detection limit for recombinant GST tagged RUNX2 is approximately 3ng/ml as a capture antibody.

 [Protocol Download](#)

ELISA

Gene Information

Entrez GeneID: [860](#)

GeneBank [NM_004348](#)

Accession#:

Protein [NP_004339](#)

Accession#:

Gene Name: RUNX2

Gene Alias: AML3,CBFA1,CCD,CCD1,MGC120022,MGC120023,OSF2,PEA2aA,PEBP2A1,PEBP2A2,PEBP2aA,PEBP2aA1

Gene runt-related transcription factor 2

Description:

Omim ID: [119600](#), [600211](#)

Gene Ontology: [Hyperlink](#)

Gene Summary: This gene is a member of the RUNX family of transcription factors and encodes a nuclear protein with an Runt DNA-binding domain. This protein is essential for osteoblastic differentiation and skeletal morphogenesis and acts as a scaffold for nucleic acids and regulatory factors involved in skeletal gene expression. The protein can bind DNA both as a monomer or, with more affinity, as a subunit of a heterodimeric complex. Mutations in this gene have been associated with the bone development disorder cleidocranial dysplasia (CCD). Transcript variants that encode different protein isoforms result from the use of alternate promoters as well as alternate splicing. [provided by RefSeq]

Other Designations: CBF-alpha 1,OTTHUMP00000016533,SL3-3 enhancer factor 1 alpha A subunit,SL3/AKV core-binding factor alpha A subunit,acute myeloid leukemia 3 protein,core-binding factor, runt domain, alpha subunit 1,osteoblast-specific transcription factor 2,polyomavirus e

Related Disease

[Alzheimer Disease](#) [Alzheimer disease](#) [Bone Diseases](#) [Cardiovascular Diseases](#) [Cleft Lip](#) [Cleft Palate](#) [Cleidocranial Dysplasia](#) [Diabetes Complications](#) [Diabetes Mellitus, Type 2](#) [Fractures, Bone](#) [Genetic Predisposition to Disease](#) [Metabolic Syndrome X](#) [Neoplasms](#) [Ossification of Posterior Longitudinal Ligament](#) [Osteoporosis](#) [Tobacco Use Disorder](#)