



# SZABO SCANDIC

Part of Europa Biosite

## Produktinformation



Forschungsprodukte & Biochemikalien



Zellkultur & Verbrauchsmaterial



Diagnostik & molekulare Diagnostik



Laborgeräte & Service

Weitere Information auf den folgenden Seiten!  
See the following pages for more information!



### Lieferung & Zahlungsart

siehe unsere [Liefer- und Versandbedingungen](#)

### Zuschläge

- Mindermengenzuschlag
- Trockeneiszuschlag
- Gefahrgutzuschlag
- Expressversand

### SZABO-SCANDIC HandelsgmbH

Quellenstraße 110, A-1100 Wien

T. +43(0)1 489 3961-0

F. +43(0)1 489 3961-7

[mail@szabo-scandic.com](mailto:mail@szabo-scandic.com)

[www.szabo-scandic.com](http://www.szabo-scandic.com)

[linkedin.com/company/szaboscandic](https://www.linkedin.com/company/szaboscandic) 



## RUNX1 monoclonal antibody (M01), clone 3A8

Catalog # : H00000861-M01

規格 : [ 100 ug ]

[List All](#)

### Specification

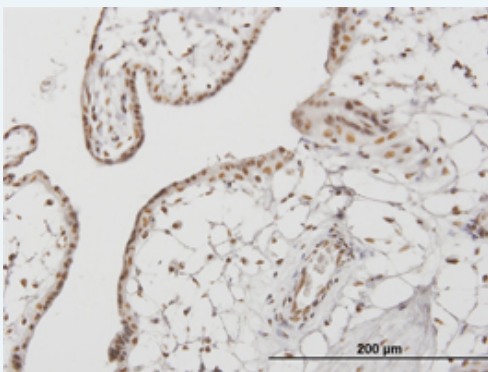
<b>Product Description:</b>	Mouse monoclonal antibody raised against a partial recombinant RUNX1.
<b>Immunogen:</b>	RUNX1 (NP_001001890.1, 210 a.a. ~ 310 a.a) partial recombinant protein with GST tag. MW of the GST tag alone is 26 KDa.
<b>Sequence:</b>	RVSPHHPAPTPNPRASLNHSTAFNPQPQSQMQDTRQIQSPSPWSYDQS YQYLGSIASPSVHPATPISPGRASGMTLSAELSSRLSTAPDLTAFSDPR QFP
<b>Host:</b>	Mouse
<b>Reactivity:</b>	Human
<b>Isotype:</b>	IgG2b Kappa
<b>Quality Control Testing:</b>	Antibody Reactive Against Recombinant Protein.
<b>Storage Buffer:</b>	In 1x PBS, pH 7.4
<b>Storage Instruction:</b>	Store at -20°C or lower. Aliquot to avoid repeated freezing and thawing.
<b>MSDS:</b>	 <a href="#">Download</a>
<b>Datasheet:</b>	 <a href="#">Download</a>


### Publication Reference

1. [The RUNX1 transcription factor is expressed in serous epithelial ovarian carcinoma and contributes to cell proliferation, migration and invasion.](#)  
Keita M, Bachvarova M, Morin C, Plante M, Gregoire J, Renaud MC, Sebastianelli A, Trinh XB, Bachvarov D. *Cell Cycle*. 2013 Feb 26;12(6).

### Applications

#### Immunohistochemistry (Formalin/PFA-fixed paraffin-embedded sections)

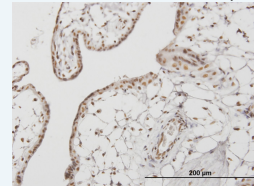



 [enlarge this image](#)

Immunoperoxidase of monoclonal antibody to RUNX1 on formalin-fixed paraffin-embedded human placenta. [antibody concentration 1.2 ug/ml]

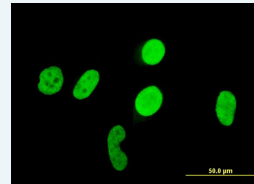
### Application Image

Immunohistochemistry  
(Formalin/PFA-fixed paraffin-embedded sections)



 [enlarge](#)

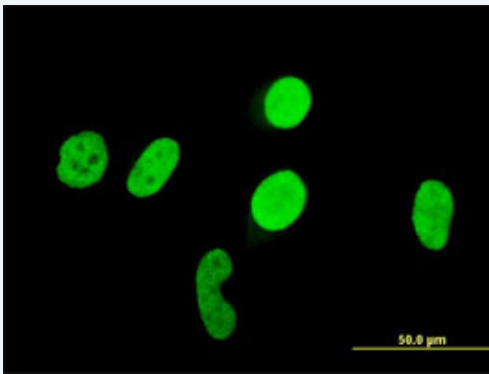
Immunofluorescence



 [enlarge](#)

ELISA

### Immunofluorescence



 enlarge this image

Immunofluorescence of monoclonal antibody to RUNX1 on HeLa cell . [antibody concentration 10 ug/ml]

### ELISA

### Gene Information

**Entrez GeneID:** [861](#)

**GeneBank** [NM\\_001001890](#)

**Accession#:**

**Protein** [NP\\_001001890.1](#)

**Accession#:**

**Gene Name:** RUNX1

**Gene Alias:** AML1,AML1-EVI-1,AML1CR1,CBFA2,EVI-1,PEBP2aB

**Gene** runt-related transcription factor 1

**Description:**

**Omim ID:** [151385](#), [180300](#), [601399](#), [601626](#)

**Gene Ontology:** [Hyperlink](#)

**Gene Summary:** Core binding factor (CBF) is a heterodimeric transcription factor that binds to the core element of many enhancers and promoters. The protein encoded by this gene represents the alpha subunit of CBF and is thought to be involved in the development of normal hematopoiesis. Chromosomal translocations involving this gene are well-documented and have been associated with several types of leukemia. Three transcript variants encoding different isoforms have been found for this gene. [provided by RefSeq]

**Other Designations:** AML1-EVI-1 fusion protein,acute myeloid leukemia 1,aml1 oncogene,core-binding factor, runt domain, alpha subunit 2

### Gene Pathway

[Acute myeloid leukemia](#) [Chronic myeloid leukemia](#) [Pathways in cancer](#)

### Related Disease

[Arthritis](#), [Psoriatic Arthritis](#), [Rheumatoid Arthritis](#) [Asthma](#) [Asthma Blast Crisis](#) [Cardiovascular Diseases](#) [Colitis](#), [Ulcerative Crohn Disease](#) [Crohn's disease](#) [Diabetes Mellitus](#), [Type 1 Diabetes Mellitus](#), [Type 2 Disease Progression](#) [Disease Susceptibility](#) [Edema](#) [Genetic Predisposition to Disease](#) [Immune System Diseases](#) [Leukemia](#), [chronic myeloid Leukemia](#), [Myelocytic](#), [Acute Leukemia](#), [Myeloid](#), [Acute](#)

... see more

---

[服務條款](#) | [隱私權政策](#) | [著作及商標](#) | [網站地圖](#)

©2016 亞諾法生技股份有限公司 Abnova Corporation. 版權所有.