



SZABO SCANDIC

Part of Europa Biosite

Produktinformation



Forschungsprodukte & Biochemikalien



Zellkultur & Verbrauchsmaterial



Diagnostik & molekulare Diagnostik



Laborgeräte & Service

Weitere Information auf den folgenden Seiten!
See the following pages for more information!



Lieferung & Zahlungsart

siehe unsere [Liefer- und Versandbedingungen](#)

Zuschläge

- Mindermengenzuschlag
- Trockeneiszuschlag
- Gefahrgutzuschlag
- Expressversand

SZABO-SCANDIC HandelsgmbH

Quellenstraße 110, A-1100 Wien

T. +43(0)1 489 3961-0

F. +43(0)1 489 3961-7

mail@szabo-scandic.com

www.szabo-scandic.com

[linkedin.com/company/szaboscandic](https://www.linkedin.com/company/szaboscandic) 

RUNX1 monoclonal antibody (M05), clone 4E7

Catalog # : H00000861-M05

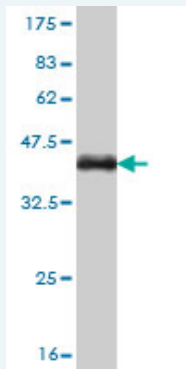
規格 : [100 ug]

[List All](#)

Specification

Product Description:	Mouse monoclonal antibody raised against a partial recombinant RUNX1.
Immunogen:	RUNX1 (NP_001001890.1, 210 a.a. ~ 310 a.a) partial recombinant protein with GST tag. MW of the GST tag alone is 26 KDa.
Sequence:	RVSPHHPAPTPNPRASLNHSTAFNPQPQSQMQDTRQIQPSPWYSYDQS YQYLGSIASPSVHPATPISPGRASGMTLSAELSSRLSTAPDLTAFSDPR QFP
Host:	Mouse
Reactivity:	Human
Isotype:	IgG2b Kappa

Quality Control Testing: Antibody Reactive Against Recombinant Protein.



Western Blot detection against Immunogen (36.85 KDa) .

Storage Buffer: In 1x PBS, pH 7.4

Storage Instruction: Store at -20°C or lower. Aliquot to avoid repeated freezing and thawing.

MSDS: [Download](#)

Datasheet: [Download](#)

Applications

Western Blot (Cell lysate)

Application Image

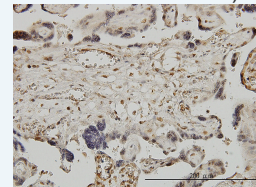
Western Blot (Cell lysate)



[enlarge](#)

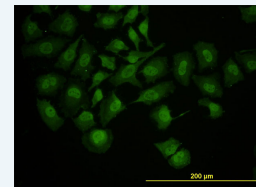
Western Blot (Recombinant protein)

Immunohistochemistry (Formalin/PFA-fixed paraffin-embedded sections)



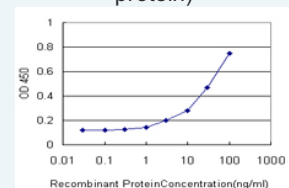
[enlarge](#)

Immunofluorescence



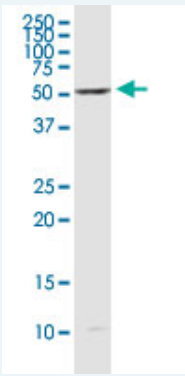
[enlarge](#)

Sandwich ELISA (Recombinant protein)



[enlarge](#)

ELISA



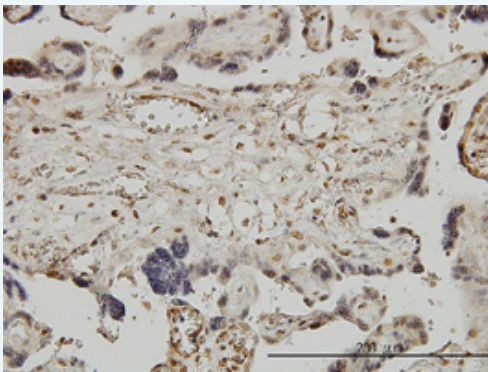
RUNX1 monoclonal antibody (M05), clone 4E7. Western Blot analysis of RUNX1 expression in K-562.

[Protocol Download](#)

Western Blot (Recombinant protein)

[Protocol Download](#)

Immunohistochemistry (Formalin/PFA-fixed paraffin-embedded sections)

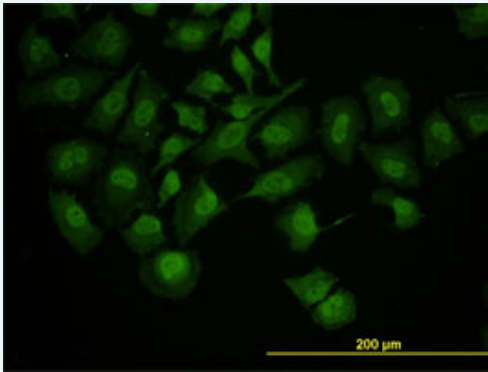


[enlarge this image](#)

Immunoperoxidase of monoclonal antibody to RUNX1 on formalin-fixed paraffin-embedded human placenta. [antibody concentration 3 ug/ml]

[Protocol Download](#)

Immunofluorescence

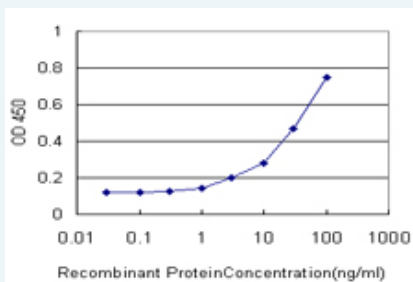


[enlarge this image](#)

Immunofluorescence of monoclonal antibody to RUNX1 on HeLa cell. [antibody concentration 10 ug/ml]

[Protocol Download](#)

Sandwich ELISA (Recombinant protein)



Detection limit for recombinant GST tagged RUNX1 is approximately 1ng/ml as a capture antibody.

ELISA

Gene Information

Entrez GeneID: [861](#)**GeneBank
Accession#:** [NM_001001890](#)**Protein
Accession#:** [NP_001001890.1](#)**Gene Name:** RUNX1**Gene Alias:** AML1,AML1-EVI-1,AML1CR1,CBFA2,EVI-1,PEBP2aB**Gene
Description:** runt-related transcription factor 1**Omim ID:** [151385](#), [180300](#), [601399](#), [601626](#)**Gene Ontology:** [Hyperlink](#)**Gene Summary:** Core binding factor (CBF) is a heterodimeric transcription factor that binds to the core element of many enhancers and promoters. The protein encoded by this gene represents the alpha subunit of CBF and is thought to be involved in the development of normal hematopoiesis. Chromosomal translocations involving this gene are well-documented and have been associated with several types of leukemia. Three transcript variants encoding different isoforms have been found for this gene. [provided by RefSeq]**Other
Designations:** AML1-EVI-1 fusion protein,acute myeloid leukemia 1,aml1 oncogene,core-binding factor, runt domain, alpha subunit 2**Gene Pathway**

[Acute myeloid leukemia](#) [Chronic myeloid leukemia](#) [Pathways in cancer](#)**Related Disease**

[Arthritis](#), [Psoriatic Arthritis](#), [Rheumatoid Arthritis](#) [Asthma](#) [Asthma](#) [Blast Crisis](#)
[Cardiovascular Diseases](#) [Colitis](#), [Ulcerative](#) [Crohn Disease](#) [Crohn's disease](#)
[Diabetes Mellitus](#), [Type 1](#) [Diabetes Mellitus](#), [Type 2](#) [Disease Progression](#)
[Disease Susceptibility](#) [Edema](#) [Genetic Predisposition to Disease](#) [Immune System Diseases](#)
[Leukemia](#), [chronic myeloid](#) [Leukemia](#), [Myelocytic](#), [Acute](#) [Leukemia](#), [Myeloid](#), [Acute](#)

... see more