



SZABO SCANDIC

Part of Europa Biosite

Produktinformation



Forschungsprodukte & Biochemikalien



Zellkultur & Verbrauchsmaterial



Diagnostik & molekulare Diagnostik



Laborgeräte & Service

Weitere Information auf den folgenden Seiten!
See the following pages for more information!



Lieferung & Zahlungsart

siehe unsere [Liefer- und Versandbedingungen](#)

Zuschläge

- Mindermengenzuschlag
- Trockeneiszuschlag
- Gefahrgutzuschlag
- Expressversand

SZABO-SCANDIC HandelsgmbH

Quellenstraße 110, A-1100 Wien

T. +43(0)1 489 3961-0

F. +43(0)1 489 3961-7

mail@szabo-scandic.com

www.szabo-scandic.com

[linkedin.com/company/szaboscandic](https://www.linkedin.com/company/szaboscandic) 

RUNX1T1 purified MaxPab rabbit polyclonal antibody (D01P) MaxPab®

Catalog # : H00000862-D01P

規格 : [100 ug]

[List All](#)

Specification

Product Description: Rabbit polyclonal antibody raised against a full-length human RUNX1T1 protein.

Immunogen: RUNX1T1 (NP_004340.1, 1 a.a. ~ 577 a.a) full-length human protein.

Sequence:
 MPDRTEKHSTMPDSPVDVKTQSRLTPPTMPPPPTTQGAPRTSSFTPTT
 LTNGTSHSPTALNGAPSPNGFSNGPSSSSSSSLANQQLPPACGARQLS
 KLKRFLLTLQQFGNDISPEIGERVRTLVLGLVNSTLTIEEFHSLKQEATNF
 PLRPFVIPFLKANLPLLQRELLHCARLAKQNPAQYLAQHEQLLLDASTTS
 PVDSELLLDVNENGRRTPDRTKENGFDREPLHSEHPSKRPCTISPGQ
 RYSPNNGLSYQPNGLPHPTPPPPQHYRLDDMAIAHHYRDSYRHPSHRDL
 RDRNRPMGLHGTRQEEMIDHRLTDREWAEWVKHLDHLLNCIMDMVEKT
 RRSLTVLRRCQEQADREELNYWIRRYSDAEDLKKGGGSSSSSHSRQQSPV
 NPDPVALDAHREFLHRPASGYVPEEIWKAAEEAVNEVKRQAMTELQKAV
 SEAERKAHDMITTERAKMERTVAEAKRQAAEDALAVINQQEDSSSESCWN
 CGRKASETCSGCNTARYCGSFCQHKDWEKHHHCQTLQAQQQGDTP
 AVSSSVTPNSGAGSPMDTPPAATPRSTTPGTPSTIETTPR

Host: Rabbit

Reactivity: Human

Quality Control Testing: Antibody reactive against mammalian transfected lysate.

Storage Buffer: In 1x PBS, pH 7.4

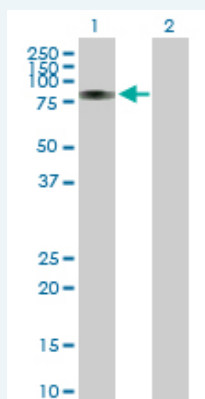
Storage Instruction: Store at -20°C or lower. Aliquot to avoid repeated freezing and thawing.

MSDS: [Download](#)

Datasheet: [Download](#)

Applications

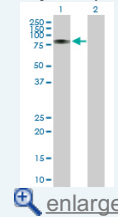
Western Blot (Transfected lysate)



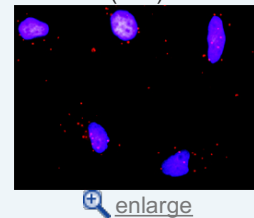
Western Blot analysis of RUNX1T1 expression in transfected 293T cell line (H00000862-T01) by RUNX1T1 MaxPab polyclonal antibody.

Application Image

Western Blot (Transfected lysate)



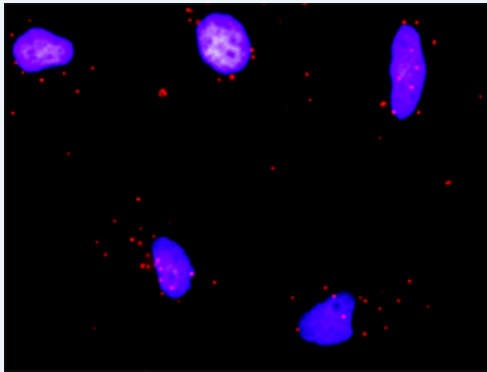
In situ Proximity Ligation Assay (Cell)



Lane 1: RUNX1T1 transfected lysate(64.40 KDa).
Lane 2: Non-transfected lysate.

 [Protocol Download](#)

In situ Proximity Ligation Assay (Cell)



Proximity Ligation Analysis of protein-protein interactions between RUNX1T1 and HDAC1. HeLa cells were stained with anti-RUNX1T1 rabbit purified polyclonal 1:1200 and anti-HDAC1 mouse monoclonal antibody 1:50. Each red dot represents the detection of protein-protein interaction complex, and nuclei were counterstained with DAPI (blue).

Gene Information

Entrez GeneID: [862](#)

**GeneBank
Accession#:** [NM_004349.2](#)

**Protein
Accession#:** [NP_004340.1](#)

Gene Name: RUNX1T1

Gene Alias: AML1T1,CBFA2T1,CDR,ETO,MGC2796,MTG8,MTG8b,ZMYND2

**Gene
Description:** runt-related transcription factor 1; translocated to, 1 (cyclin D-related)

Omim ID: [133435](#)

Gene Ontology: [Hyperlink](#)

Gene Summary: The protein encoded by this gene is a putative zinc finger transcription factor and oncoprotein. In acute myeloid leukemia, especially in the M2 subtype, the t(8;21)(q22;q22) translocation is one of the most frequent karyotypic abnormalities. The translocation produces a chimeric gene made up of the 5'-region of the RUNX1 gene fused to the 3'-region of this gene. The chimeric protein is thought to associate with the nuclear corepressor/histone deacetylase complex to block hematopoietic differentiation. Several transcript variants encoding multiple isoforms have been found for this gene. [provided by RefSeq]

**Other
Designations:** acute myelogenous leukemia 1 translocation 1 protein,acute myelogenous leukemia 1 translocation 1, cyclin-D related,core-binding factor, runt domain, alpha subunit 2; translocated to, 1; cyclin D-related,eight twenty one protein,myeloid translocation gene

Gene Pathway

[Acute myeloid leukemia Pathways in cancer](#)

