



SZABO SCANDIC

Part of Europa Biosite

Produktinformation



Forschungsprodukte & Biochemikalien



Zellkultur & Verbrauchsmaterial



Diagnostik & molekulare Diagnostik



Laborgeräte & Service

Weitere Information auf den folgenden Seiten!
See the following pages for more information!



Lieferung & Zahlungsart

siehe unsere [Liefer- und Versandbedingungen](#)

Zuschläge

- Mindermengenzuschlag
- Trockeneiszuschlag
- Gefahrgutzuschlag
- Expressversand

SZABO-SCANDIC HandelsgmbH

Quellenstraße 110, A-1100 Wien

T. +43(0)1 489 3961-0

F. +43(0)1 489 3961-7

mail@szabo-scandic.com

www.szabo-scandic.com

[linkedin.com/company/szaboscandic](https://www.linkedin.com/company/szaboscandic) 

SERPINA6 (Human) Matched Antibody Pair

Catalog # : H00000866-AP11

規格 : [1 Set]

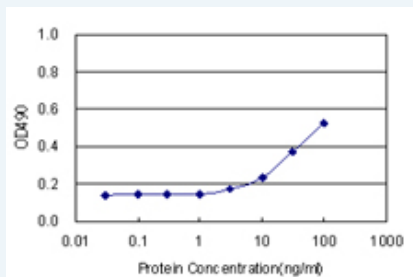
[List All](#)

Specification

Product Description: This antibody pair set comes with matched antibody pair to detect and quantify protein level of human SERPINA6.

Reactivity: Human

Quality Control Testing: Standard curve using recombinant protein (H00000866-P01) as an analyte.



Sandwich ELISA detection sensitivity ranging from 3 ng/ml to 100 ng/ml.

Supplied Product: Antibody pair set content:
 1. Capture antibody: rabbit MaxPab® affinity purified polyclonal anti-SERPINA6 (100 ug)
 2. Detection antibody: mouse monoclonal anti-SERPINA6, IgG1 Kappa (20 ug)
 *Reagents are sufficient for at least 1-2 x 96 well plates using recommended protocols.

Storage Instruction: Store reagents of the antibody pair set at -20°C or lower. Please aliquot to avoid repeated freeze thaw cycle. Reagents should be returned to -20°C storage immediately after use.

MSDS:  [Download](#)

Applications

ELISA Pair (Recombinant protein)

 [Protocol Download](#)

Gene Information

Entrez GeneID: [866](#)

Gene Name: SERPINA6

Gene Alias: CBG

Gene Description: serpin peptidase inhibitor, clade A (alpha-1 antiproteinase, antitrypsin), member 6

Omim ID: [122500](#)

Gene Ontology: [Hyperlink](#)

Application Image

ELISA Pair (Recombinant protein)

Gene Summary: This gene encodes an alpha-globulin protein with corticosteroid-binding properties. This is the major transport protein for glucocorticoids and progestins in the blood of most vertebrates. The gene localizes to a chromosomal region containing several closely related serine protease inhibitors which may have evolved by duplication events. [provided by RefSeq]

Other Designations: corticosteroid binding globulin,serine (or cysteine) proteinase inhibitor, clade A (alpha-1 antiproteinase, antitrypsin), member 6,transcortin

Related Disease

[Abortion, Habitual](#) [alpha 1-Antitrypsin Deficiency](#) [Arthritis, Juvenile Rheumatoid](#) [Asthma](#) [Asthma Cardiovascular Diseases](#) [Chronic Disease](#) [Diabetes Mellitus, Type 2](#) [Ductus Arteriosus, Patent](#) [Edema](#) [Fatigue Syndrome, Chronic](#) [Genetic Predisposition to Disease](#) [Infant, Premature, Diseases](#) [Infertility, Female](#) [Lymphoma, Non-Hodgkin](#) [Mental Disorders](#) [Musculoskeletal Diseases](#) [Obesity](#) [Obesity](#)

... see more

[服務條款](#) | [隱私權政策](#) | [著作及商標](#) | [網站地圖](#)

©2016 亞諾法生技股份有限公司 Abnova Corporation. 版權所有.