



# SZABO SCANDIC

Part of Europa Biosite

## Produktinformation



Forschungsprodukte & Biochemikalien



Zellkultur & Verbrauchsmaterial



Diagnostik & molekulare Diagnostik



Laborgeräte & Service

Weitere Information auf den folgenden Seiten!  
See the following pages for more information!



### Lieferung & Zahlungsart

siehe unsere [Liefer- und Versandbedingungen](#)

### Zuschläge

- Mindermengenzuschlag
- Trockeneiszuschlag
- Gefahrgutzuschlag
- Expressversand

### SZABO-SCANDIC HandelsgmbH

Quellenstraße 110, A-1100 Wien

T. +43(0)1 489 3961-0

F. +43(0)1 489 3961-7

[mail@szabo-scandic.com](mailto:mail@szabo-scandic.com)

[www.szabo-scandic.com](http://www.szabo-scandic.com)

[linkedin.com/company/szaboscandic](https://www.linkedin.com/company/szaboscandic) 

**SERPINA6 purified MaxPab mouse polyclonal antibody (B01P)** MaxPab®

Catalog # : H00000866-B01P

規格 : [ 50 ug ]

[List All](#)

**Specification**

**Product Description:** Mouse polyclonal antibody raised against a full-length human SERPINA6 protein.

**Immunogen:** SERPINA6 (NP\_001747.2, 1 a.a. ~ 405 a.a) full-length human protein.

**Sequence:**  
 MPLLLYTCLLWLPTSGLWTVQAMPNAAYVNMSNHHRGLASANVDFAF  
 SLYKHLVALSPKKNIFISPVISMALAMLSLGTGCHTRAQLLQGLGFNLTE  
 RSETEIHQGFQHLHQLFAKSDTSLEMTMGNALFLDGSLELLESFSADIKH  
 YYEVLAMNFQDWATASRQINSYVKNKTQGKVDLFSGLDSPAILVLVN  
 YIFFKGTWTQPFDLASTREENFYVDETTVVKVPMMLQSSTISYLHDAELP  
 CQLVQMNIVGNGTVFFILPDKGKMNTVIAALSRDTINRWSAGLTSSQVD  
 LYIPKVTISGVYDLGDVLEEMGIADLFTNQANFSRITQDAQLKSSKVHKA  
 VLQLNEEGVDTAGSTGVTNLNLTSPKIILRFNQPFIMIFDHF TWSSLFLARV  
 MNPV


**Host:** Mouse

**Reactivity:** Human

**Quality Control Testing:** Antibody reactive against mammalian transfected lysate.

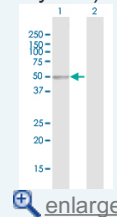
**Storage Buffer:** In 1x PBS, pH 7.4


**Storage Instruction:** Store at -20°C or lower. Aliquot to avoid repeated freezing and thawing.

**Datasheet:**  [Download](#)

**Application Image**

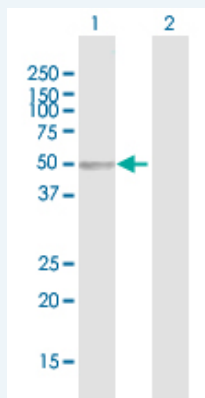
Western Blot (Transfected lysate)



 [enlarge](#)

**Applications**


**Western Blot (Transfected lysate)**



Western Blot analysis of SERPINA6 expression in transfected 293T cell line ([H00000866-T01](#)) by SERPINA6 MaxPab polyclonal antibody.

Lane 1: SERPINA6 transfected lysate(44.55 KDa).

Lane 2: Non-transfected lysate.

 [Protocol Download](#)

## Gene Information

---

**Entrez GeneID:** [866](#)

---

**GeneBank  
Accession#:** [NM\\_001756.3](#)

---

**Protein  
Accession#:** [NP\\_001747.2](#)

---

**Gene Name:** SERPINA6

---

**Gene Alias:** CBG

---

**Gene  
Description:** serpin peptidase inhibitor, clade A (alpha-1 antiproteinase, antitrypsin), member 6

---

**Omim ID:** [122500](#)

---

**Gene Ontology:** [Hyperlink](#)

---

**Gene Summary:** This gene encodes an alpha-globulin protein with corticosteroid-binding properties. This is the major transport protein for glucocorticoids and progestins in the blood of most vertebrates. The gene localizes to a chromosomal region containing several closely related serine protease inhibitors which may have evolved by duplication events. [provided by RefSeq]

---

**Other  
Designations:** corticosteroid binding globulin,serine (or cysteine) proteinase inhibitor, clade A (alpha-1 antiproteinase, antitrypsin), member 6,transcortin

---

## Related Disease

---

[Abortion, Habitual](#) [alpha 1-Antitrypsin Deficiency Arthritis](#) [Juvenile Rheumatoid Asthma](#) [Asthma](#) [Cardiovascular Diseases](#) [Chronic Disease](#) [Diabetes Mellitus, Type 2](#) [Ductus Arteriosus, Patent](#) [Edema](#) [Fatigue Syndrome](#) [Chronic](#) [Genetic Predisposition to Disease](#) [Infant, Premature, Diseases](#) [Infertility, Female](#) [Lymphoma, Non-Hodgkin](#) [Mental Disorders](#) [Musculoskeletal Diseases](#) [Obesity](#) [Obesity](#)

... see more