



# SZABO SCANDIC

Part of Europa Biosite

## Produktinformation



Forschungsprodukte & Biochemikalien



Zellkultur & Verbrauchsmaterial



Diagnostik & molekulare Diagnostik



Laborgeräte & Service

Weitere Information auf den folgenden Seiten!  
See the following pages for more information!



### Lieferung & Zahlungsart

siehe unsere [Liefer- und Versandbedingungen](#)

### Zuschläge

- Mindermengenzuschlag
- Trockeneiszuschlag
- Gefahrgutzuschlag
- Expressversand

### SZABO-SCANDIC HandelsgmbH

Quellenstraße 110, A-1100 Wien

T. +43(0)1 489 3961-0

F. +43(0)1 489 3961-7

[mail@szabo-scandic.com](mailto:mail@szabo-scandic.com)

[www.szabo-scandic.com](http://www.szabo-scandic.com)

[linkedin.com/company/szaboscandic](https://www.linkedin.com/company/szaboscandic) 

**SERPINA6 purified MaxPab rabbit polyclonal antibody (D01P)** MaxPab®

Catalog # : H00000866-D01P

規格 : [ 100 ug ]

List All

**Specification**

**Product Description:** Rabbit polyclonal antibody raised against a full-length human SERPINA6 protein.

**Immunogen:** SERPINA6 (NP\_001747.2, 1 a.a. ~ 405 a.a) full-length human protein.

**Sequence:**  
 MPLLLYTCLLWLPTSGLWTVQAMPNAAYVNMSNHRGLASANVDFAF  
 SLYKHLVALSPKKNIFISPVISMALAMLSLGTGCHTRAQLLQGLGFNLTE  
 RSETEIHQGFQHLHQLFAKSDTSLEMTMGNALFLDGSLELLESFSADIKH  
 YYESEVLAMNFQDWATASRQINSYVKNKTQGKVDLFSGLDSPAILVLVN  
 YIFFKGTWTQPFDLASTREENFYVDETTVVKVPMMLQSSTISYLHDAELP  
 CQLVQMNYVGNQTVFFILPDKGKMNTVIAALSRDTINRWSAGLTSSQVD  
 LYIPKVTISGVYDLGDVLEEMGIADLFTNQANFSRITQDAQLKSSKVHKA  
 VLQLNEEGVDTAGSTGVTNLNLTSPKIILRFNQPFIMIFDHF TWSSLFLARV  
 MNPV


**Host:** Rabbit


**Reactivity:** Human

**Quality Control Testing:** Antibody reactive against mammalian transfected lysate.

**Storage Buffer:** In 1x PBS, pH 7.4

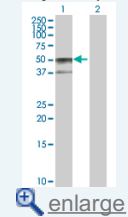
**Storage Instruction:** Store at -20°C or lower. Aliquot to avoid repeated freezing and thawing.

**MSDS:**  [Download](#)

**Datasheet:**  [Download](#)

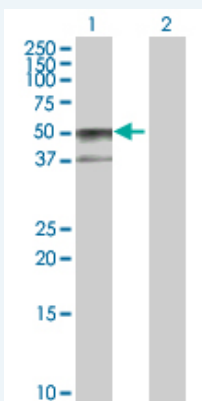
**Application Image**

Western Blot (Transfected lysate)



**Applications**

**Western Blot (Transfected lysate)**



Western Blot analysis of SERPINA6 expression in transfected 293T cell line (H00000866-T01) by SERPINA6 MaxPab polyclonal antibody.

Lane 1: SERPINA6 transfected lysate(45.10 KDa).  
 Lane 2: Non-transfected lysate.

## Gene Information

---

**Entrez GeneID:** [866](#)

**GeneBank Accession#:** [NM\\_001756.3](#)

**Protein Accession#:** [NP\\_001747.2](#)

**Gene Name:** SERPINA6

**Gene Alias:** CBG

**Gene Description:** serpin peptidase inhibitor, clade A (alpha-1 antiproteinase, antitrypsin), member 6

**Omim ID:** [122500](#)

**Gene Ontology:** [Hyperlink](#)

**Gene Summary:** This gene encodes an alpha-globulin protein with corticosteroid-binding properties. This is the major transport protein for glucocorticoids and progestins in the blood of most vertebrates. The gene localizes to a chromosomal region containing several closely related serine protease inhibitors which may have evolved by duplication events. [provided by RefSeq]

**Other Designations:** corticosteroid binding globulin,serine (or cysteine) proteinase inhibitor, clade A (alpha-1 antiproteinase, antitrypsin), member 6,transcortin

## Related Disease

---

[Abortion, Habitual](#) [alpha 1-Antitrypsin Deficiency](#) [Arthritis, Juvenile Rheumatoid](#) [Asthma](#) [Asthma](#) [Cardiovascular Diseases](#) [Chronic Disease](#) [Diabetes Mellitus, Type 2](#) [Ductus Arteriosus, Patent](#) [Edema](#) [Fatigue Syndrome, Chronic](#) [Genetic Predisposition to Disease](#) [Infant, Premature, Diseases](#) [Infertility, Female](#) [Lymphoma, Non-Hodgkin](#) [Mental Disorders](#) [Musculoskeletal Diseases](#) [Obesity](#) [Obesity](#)

... see more