



# SZABO SCANDIC

Part of Europa Biosite

## Produktinformation



Forschungsprodukte & Biochemikalien



Zellkultur & Verbrauchsmaterial



Diagnostik & molekulare Diagnostik



Laborgeräte & Service

Weitere Information auf den folgenden Seiten!  
See the following pages for more information!



### Lieferung & Zahlungsart

siehe unsere [Liefer- und Versandbedingungen](#)

### Zuschläge

- Mindermengenzuschlag
- Trockeneiszuschlag
- Gefahrgutzuschlag
- Expressversand

### SZABO-SCANDIC HandelsgmbH

Quellenstraße 110, A-1100 Wien

T. +43(0)1 489 3961-0

F. +43(0)1 489 3961-7

[mail@szabo-scandic.com](mailto:mail@szabo-scandic.com)

[www.szabo-scandic.com](http://www.szabo-scandic.com)

[linkedin.com/company/szaboscandic](https://www.linkedin.com/company/szaboscandic) 

## SERPINA6 monoclonal antibody (M04), clone 3B12

Catalog # : H00000866-M04

規格 : [ 100 ug ]

[List All](#)

### Specification

**Product Description:** Mouse monoclonal antibody raised against a full length recombinant SERPINA6.

**Immunogen:** SERPINA6 (AAH58021, 23 a.a. ~ 405 a.a) full-length recombinant protein with GST tag. MW of the GST tag alone is 26 KDa.

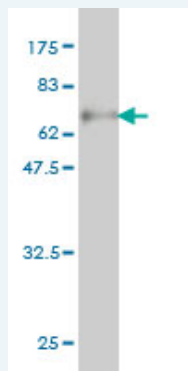
**Sequence:** MDPNAAVYVNMNSNHRGLASANVDFAFSLYKHLVALSPKKNIFISPVSISMA  
LAML.SLGT.CGH.TRAQL.LQGL.GFN.LTERSETEIH.QGF.QHL.HQL.FAKSDTS  
LEMTMG.NAL.FLD.GSLE.LLESF.SADIK.HY.ESEVL.AMNF.QDW.ATASR.QINS  
YVKNKT.QGK.VDLF.SGLD.SPAIL.VLVNY.IFF.KGT.WT.QPFD.LASTREEN.FYV  
DETT.VWK.VP.MML.QSST.ISYL.HDAEL.PCQL.VQM.NY.VGNGT.VFF.ILP.DK.GK  
MNT.VIAAL.SRDT.IN.RWS.AGLT.SSQ.VDL.YIP.KVT.ISG.VYD.LGD.VLEEM.GIAD  
LFT.NQAN.FSRIT.QDAQ.LKSSK.VVH.KAVL.QL.NEE.GVDT.AGST.GVTL.NL.NTS  
KPIIL.RFN.QPFI.MIFD.HFT.WSSL.FLAR.VM.NPV

**Host:** Mouse

**Reactivity:** Human

**Isotype:** IgG1 Kappa

**Quality Control Testing:** Antibody Reactive Against Recombinant Protein.



Western Blot detection against Immunogen (67.87 KDa) .

**Storage Buffer:** In 1x PBS, pH 7.4

**Storage Instruction:** Store at -20°C or lower. Aliquot to avoid repeated freezing and thawing.

**MSDS:** [Download](#)

**Datasheet:** [Download](#)

### Applications

**Western Blot (Recombinant protein)**

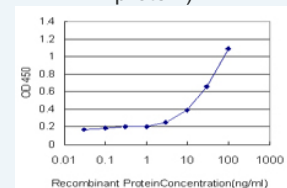
[Protocol Download](#)

**Sandwich ELISA (Recombinant protein)**

### Application Image

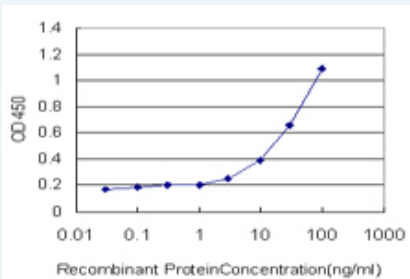
Western Blot (Recombinant protein)

Sandwich ELISA (Recombinant protein)



[enlarge](#)

ELISA



Detection limit for recombinant GST tagged SERPINA6 is approximately 1ng/ml as a capture antibody.

 [Protocol Download](#)

## ELISA

### Gene Information

**Entrez GeneID:** [866](#)

**GeneBank** [BC058021](#)

**Accession#:**

**Protein** [AAH58021](#)

**Accession#:**

**Gene Name:** SERPINA6

**Gene Alias:** CBG

**Gene Description:** serpin peptidase inhibitor, clade A (alpha-1 antiproteinase, antitrypsin), member 6

**Omim ID:** [122500](#)

**Gene Ontology:** [Hyperlink](#)

**Gene Summary:** This gene encodes an alpha-globulin protein with corticosteroid-binding properties. This is the major transport protein for glucocorticoids and progestins in the blood of most vertebrates. The gene localizes to a chromosomal region containing several closely related serine protease inhibitors which may have evolved by duplication events. [provided by RefSeq]

**Other Designations:** corticosteroid binding globulin,serine (or cysteine) proteinase inhibitor, clade A (alpha-1 antiproteinase, antitrypsin), member 6,transcortin

### Related Disease

[Abortion, Habitual](#) [alpha 1-Antitrypsin Deficiency](#) [Arthritis, Juvenile Rheumatoid](#) [Asthma](#) [Asthma](#) [Cardiovascular Diseases](#) [Chronic Disease](#) [Diabetes Mellitus, Type 2](#) [Ductus Arteriosus, Patent](#) [Edema](#) [Fatigue Syndrome, Chronic](#) [Genetic Predisposition to Disease](#) [Infant, Premature, Diseases](#) [Infertility, Female](#) [Lymphoma, Non-Hodgkin](#) [Mental Disorders](#) [Musculoskeletal Diseases](#) [Obesity](#) [Obesity](#)

... see more