



SZABO SCANDIC

Part of Europa Biosite

Produktinformation



Forschungsprodukte & Biochemikalien



Zellkultur & Verbrauchsmaterial



Diagnostik & molekulare Diagnostik



Laborgeräte & Service

Weitere Information auf den folgenden Seiten!
See the following pages for more information!



Lieferung & Zahlungsart

siehe unsere [Liefer- und Versandbedingungen](#)

Zuschläge

- Mindermengenzuschlag
- Trockeneiszuschlag
- Gefahrgutzuschlag
- Expressversand

SZABO-SCANDIC HandelsgmbH

Quellenstraße 110, A-1100 Wien

T. +43(0)1 489 3961-0

F. +43(0)1 489 3961-7

mail@szabo-scandic.com

www.szabo-scandic.com

[linkedin.com/company/szaboscandic](https://www.linkedin.com/company/szaboscandic) 

SERPINA6 monoclonal antibody (M05), clone 3C12

Catalog # : H00000866-M05

規格 : [100 ug]

[List All](#)

Specification

Product Description: Mouse monoclonal antibody raised against a full length recombinant SERPINA6.

Immunogen: SERPINA6 (AAH58021, 23 a.a. ~ 405 a.a) full-length recombinant protein with GST tag. MW of the GST tag alone is 26 KDa.

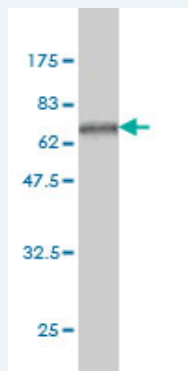
Sequence: MDPNAAAYVNMSNHRGLASANVDFAFSLYKHLVALSPKKNIFISPVISIMALAMLSLGTGCGHTRAQLLQGLGFNLTERSETEIHQGFQHLHQLFAKSDTSLLEMTMGNALFLDGSLELLESFSADIKHYESEVLAMNFQDWATASRQINSYVKNKTQGGKVDLFSGLDSPAILVLVNYIFFKGTWTQPFDLASTREENFYVDETT VVKVPMMLQSSTISYLHDAELPCQLVQMNYVGNVTFFILPDKGKMNTVIAALSRDTINRWSAGLTSSQVDLYIPKVTISGVYDLGDVLEEMGIADLFTNQANFSRITQDAQLKSSKVVHKAVLQLNEEGVDTAGSTGVTLNLTSKPIILRFNQPFIMIFDHFTWSSLFLARVMNPV

Host: Mouse

Reactivity: Human

Isotype: IgG1 Kappa

Quality Control Testing: Antibody Reactive Against Recombinant Protein.



Western Blot detection against Immunogen (67.87 KDa) .

Storage Buffer: In 1x PBS, pH 7.4

Storage Instruction: Store at -20°C or lower. Aliquot to avoid repeated freezing and thawing.

MSDS: [Download](#)

Datasheet: [Download](#)

Applications

Western Blot (Recombinant protein)

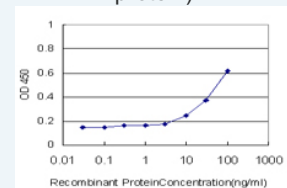
[Protocol Download](#)

Sandwich ELISA (Recombinant protein)

Application Image

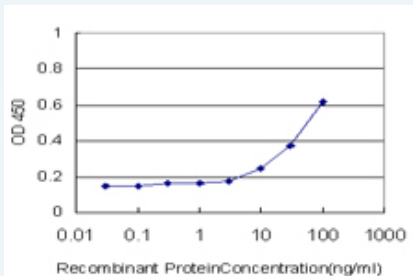
Western Blot (Recombinant protein)

Sandwich ELISA (Recombinant protein)



[enlarge](#)

ELISA



Detection limit for recombinant GST tagged SERPINA6 is approximately 3ng/ml as a capture antibody.

 [Protocol Download](#)

ELISA

Gene Information

Entrez GeneID: [866](#)

GeneBank [BC058021](#)

Accession#:

Protein [AAH58021](#)

Accession#:

Gene Name: SERPINA6

Gene Alias: CBG

Gene Description: serpin peptidase inhibitor, clade A (alpha-1 antiproteinase, antitrypsin), member 6

Omim ID: [122500](#)

Gene Ontology: [Hyperlink](#)

Gene Summary: This gene encodes an alpha-globulin protein with corticosteroid-binding properties. This is the major transport protein for glucocorticoids and progestins in the blood of most vertebrates. The gene localizes to a chromosomal region containing several closely related serine protease inhibitors which may have evolved by duplication events. [provided by RefSeq]

Other Designations: corticosteroid binding globulin,serine (or cysteine) proteinase inhibitor, clade A (alpha-1 antiproteinase, antitrypsin), member 6,transcortin

Related Disease

[Abortion, Habitual](#) [alpha 1-Antitrypsin Deficiency](#) [Arthritis, Juvenile Rheumatoid](#) [Asthma](#) [Asthma](#) [Cardiovascular Diseases](#) [Chronic Disease](#) [Diabetes Mellitus, Type 2](#) [Ductus Arteriosus, Patent](#) [Edema](#) [Fatigue Syndrome, Chronic](#) [Genetic Predisposition to Disease](#) [Infant, Premature, Diseases](#) [Infertility, Female](#) [Lymphoma, Non-Hodgkin](#) [Mental Disorders](#) [Musculoskeletal Diseases](#) [Obesity](#) [Obesity](#)

... see more