



SZABO SCANDIC

Part of Europa Biosite

Produktinformation



Forschungsprodukte & Biochemikalien



Zellkultur & Verbrauchsmaterial



Diagnostik & molekulare Diagnostik



Laborgeräte & Service

Weitere Information auf den folgenden Seiten!
See the following pages for more information!



Lieferung & Zahlungsart

siehe unsere [Liefer- und Versandbedingungen](#)

Zuschläge

- Mindermengenzuschlag
- Trockeneiszuschlag
- Gefahrgutzuschlag
- Expressversand

SZABO-SCANDIC HandelsgmbH

Quellenstraße 110, A-1100 Wien

T. +43(0)1 489 3961-0

F. +43(0)1 489 3961-7

mail@szabo-scandic.com

www.szabo-scandic.com

[linkedin.com/company/szaboscandic](https://www.linkedin.com/company/szaboscandic) 

CBL MaxPab mouse polyclonal antibody (B01) MaxPab®

Catalog # : H00000867-B01

規格 : [50 uL]

[List All](#)

Specification

Product Description: Mouse polyclonal antibody raised against a full-length human CBL protein.

Immunogen: CBL (NP_005179.2, 1 a.a. ~ 906 a.a) full-length human protein.

Sequence:
 MAGNVKSSGAGGGSGSGGGSGGGLIGLMKDAFQPHHHHHHLSPHP
 PGTVDKMKMEKCKWKLMDKVRLCQNPKLALKNPPYILDLLPDTYQHLR
 TILSRYEGKMETLGENEYFRVFMENLMKKTQKTISLFKEGKERMYEENS
 QPRRNLTKLSLIFSHMLAELKGIFFPSGLFQGDTRITKADAAEFWRKAFG
 EKTIVPWKSFRQALHEVHPISGLEAMALKSTIDLTCNDYISVFEDIFTRL
 FQPWSSLLRNWNSLAVTHPGYMAFLTIDEVKARLQKFIHKPGSYIFRLS
 CTRLGQWAIGYVTADGNLQTIHFNKPLFQALIDGREGFYLFDPGRNQ
 PDLTGLCEPTPQDHIKVTQEYELYCEMGSTFQLCKICAENDKDVKIEPC
 GHLMCTSCLTSWQSEGGQCPFCRCEIKGTEPIVDFDPRGSGSLLR
 QGAEGAPSPNYDDDDERADDTLFMMKELAGAKVERPPSPFMAPQA
 SLPPVPPRLDLLPQRVCVPSSASALGTASKAASGSLHKDKPLVPPTLR
 DLPPPPPPDRPYSVGAESRPQRRPLCTPGDCPSRDKLPPVPSSRLGD
 SWLPRPIPKVPVSAPSSSDPWTGRELTNRHSLPFLPSQMEPRPDVPR
 GSTFSLDTSMSMNSSPLVGPECDHPKIKPSSANAIYSLAARPLVPKLP
 GEQCEGEEDTEYMTSPSSRPLRPLDTSQSSRACDCDQIDSCITYEAMYN
 IQSQAPSITESSTFGEENLAAAHANTGPEESENEDDGYDVPKPPVAVLA
 RRTLSDISNASSFGWLSLDGDPNTNTEGSQVPERPPKPPRRINSE
 KAGSCQQGSGPAASAATASPQLSSEIENLMSQGYSDIQKALVIAQNNI
 EMAKNILREFVSISSPAHVAT

Host: Mouse

Reactivity: Human

Quality Control Testing: Antibody reactive against mammalian transfected lysate.

Storage Buffer: No additive

Storage Instruction: Store at -20°C or lower. Aliquot to avoid repeated freezing and thawing.

Note: For IHC and IF applications, antibody purification with Protein A will be needed prior to use.

MSDS: [Download](#)

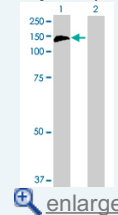
Datasheet: [Download](#)

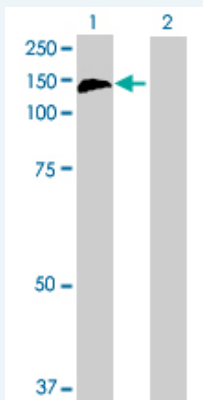
Applications

Western Blot (Transfected lysate)

Application Image

Western Blot (Transfected lysate)





Western Blot analysis of CBL expression in transfected 293T cell line ([H00000867-T01](#)) by CBL MaxPab polyclonal antibody.

Lane 1: CBL transfected lysate(99.66 KDa).
Lane 2: Non-transfected lysate.

Protocol Download

Gene Information

Entrez GeneID: [867](#)

GeneBank Accession#: [NM_005188.2](#)

Protein Accession#: [NP_005179.2](#)

Gene Name: CBL

Gene Alias: C-CBL,CBL2,RNF55

Gene Description: Cas-Br-M (murine) ecotropic retroviral transforming sequence

Omim ID: [165360](#)

Gene Ontology: [Hyperlink](#)

Gene Summary: The cbl oncogene was first identified as part of a transforming retrovirus which induces mouse pre-B and pro-B cell lymphomas. As an adaptor protein for receptor protein-tyrosine kinases, it positively regulates receptor protein-tyrosine kinase ubiquitination in a manner dependent upon its variant SH2 and RING finger domains. Ubiquitination of receptor protein-tyrosine kinases terminates signaling by marking active receptors for degradation. [provided by RefSeq]

Other Designations: oncogene CBL2

Gene Pathway

[Chronic myeloid leukemia](#) [Endocytosis](#) [ErbB signaling pathway](#) [Insulin signaling pathway](#) [Jak-STAT signaling pathway](#) [Pathways in cancer](#) [T cell receptor signaling pathway](#) [Ubiquitin mediated proteolysis](#)

Related Disease

[Diabetes Mellitus, Type 2](#) [Disease Progression](#) [Genetic Predisposition to Disease](#) [Leukemia, Myelomonocytic](#) [Chronic Tobacco Use Disorder](#)

