



SZABO SCANDIC

Part of Europa Biosite

Produktinformation



Forschungsprodukte & Biochemikalien



Zellkultur & Verbrauchsmaterial



Diagnostik & molekulare Diagnostik



Laborgeräte & Service

Weitere Information auf den folgenden Seiten!
See the following pages for more information!



Lieferung & Zahlungsart

siehe unsere [Liefer- und Versandbedingungen](#)

Zuschläge

- Mindermengenzuschlag
- Trockeneiszuschlag
- Gefahrgutzuschlag
- Expressversand

SZABO-SCANDIC HandelsgmbH

Quellenstraße 110, A-1100 Wien

T. +43(0)1 489 3961-0

F. +43(0)1 489 3961-7

mail@szabo-scandic.com

www.szabo-scandic.com

[linkedin.com/company/szaboscandic](https://www.linkedin.com/company/szaboscandic) 

CBL purified MaxPab rabbit polyclonal antibody (D01P) MaxPab®

Catalog # : H00000867-D01P

規格 : [100 ug]

[List All](#)

Specification

Product Description: Rabbit polyclonal antibody raised against a full-length human CBL protein.

Immunogen: CBL (NP_005179.2, 1 a.a. ~ 906 a.a) full-length human protein.

Sequence:
 MAGNVKSSGAGGGSGSGSGSGLIGLMKDAFQPHHHHHHLSPHP
 PGTVDKMMVEKCWKLMDKVRLCQNPKLALKNPPYILDLLPDTYQHLR
 TILSRYEGKMETLGENEYFRVFMENLMKKTQQTISLFKEGKERMYEENS
 QPRRNLTKLSLIFSHMLAELKGIFFPSGLFQGDTRITKADAAEFWRKAFG
 EKTIVPWKSFRQALHEVHPISGLEAMALKSTIDLTCNDYISVFEDIFTRL
 FQPWSSLLRNWNSLAVTHPGYMAFLTYDEVKARLQKFIHKPGSYIFRLS
 CTRLGQWAIGYVTADGNLQTIHKNKPLFQALIDGREGFYLPDGRNQ
 PDLTGLCEPTPQDHIKVTQEYELYCEMGSTFQLCKICAENDKDKVIEPC
 GHLMCTSCLTSWQESGQGCPCRCCEIKGTEPIVWDPFDPRGSGSLLR
 QGAEGAPSPNYDDDDDERADDTLFMMKELAGAKVERPPSPFSMAPQA
 SLPPVPPRLDLLPQRVCVPSSASALGTASKAASGSLHKDKLPVPPTLR
 DLPPPPPPDRPYSVGAESRPQRRPLCTPGDCPSRDKLPPVPSSRLGD
 SWLPRPIKVPVSAVSSSDPWTGRELTNRHSLPFLPSQMEPRPDVPR
 GSTFSLDTSMSMNSSPLVGPECDHPKIKPSSANAIYSLAARPLVPKLP
 GEQCEGEEDTEYMTSPSSRPLRPLDTSQSSRACDCQIDSCITYEAMYN
 IQSQAPSITESSTFGEGLNAAAHANTGPEESENEDDGYDVPKPPVAVLA
 RRTLSDISNASSSFGWLSLDGDPNTNTEGSQVPERPPKPPRRINSE
 KAGSCQQGSGPAASAATASPQLSSEIENLMSQGYQDIQKALVIAQNNI
 EMAKNILREFVSISSPAHVAT

Host: Rabbit

Reactivity: Human, Mouse

Quality Control Testing: Antibody reactive against mammalian transfected lysate.

Storage Buffer: In 1x PBS, pH 7.4

Storage Instruction: Store at -20°C or lower. Aliquot to avoid repeated freezing and thawing.

MSDS: [Download](#)

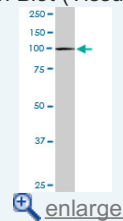
Datasheet: [Download](#)

Applications

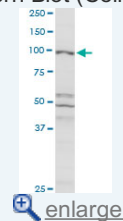
Western Blot (Tissue lysate)

Application Image

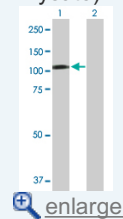
Western Blot (Tissue lysate)



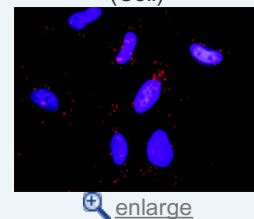
Western Blot (Cell lysate)

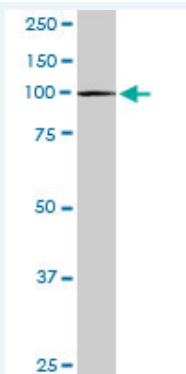


Western Blot (Transfected lysate)



In situ Proximity Ligation Assay (Cell)

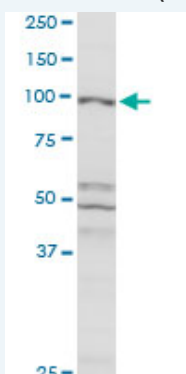




CBL MaxPab rabbit polyclonal antibody. Western Blot analysis of CBL expression in mouse spleen.

 [Protocol Download](#)

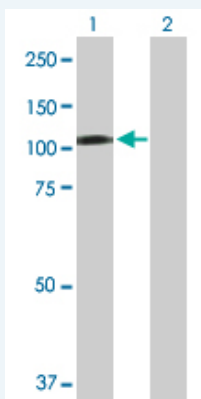
Western Blot (Cell lysate)



CBL MaxPab rabbit polyclonal antibody. Western Blot analysis of CBL expression in MCF-7.

 [Protocol Download](#)


Western Blot (Transfected lysate)



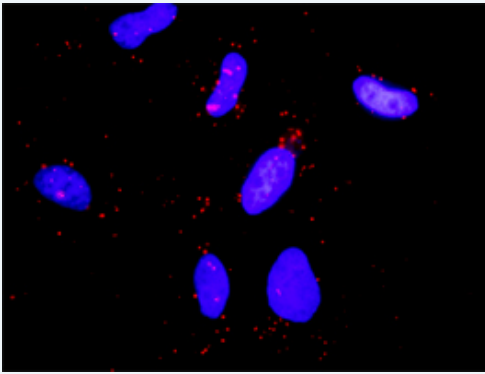
Western Blot analysis of CBL expression in transfected 293T cell line ([H00000867-T02](#)) by CBL MaxPab polyclonal antibody.

Lane 1: CBL transfected lysate(99.60 KDa).

Lane 2: Non-transfected lysate.

 [Protocol Download](#)

In situ Proximity Ligation Assay (Cell)



Proximity Ligation Analysis of protein-protein interactions between CBL and PLCG1. HeLa cells were stained with anti-CBL rabbit purified polyclonal 1:1200 and anti-PLCG1 mouse monoclonal antibody 1:50. Each red dot represents the detection of protein-protein interaction complex, and nuclei were counterstained with DAPI (blue).

Gene Information

Entrez GeneID: [867](#)

GeneBank Accession#: [NM_005188.2](#)

Protein Accession#: [NP_005179.2](#)

Gene Name: CBL

Gene Alias: C-CBL,CBL2,RNF55

Gene Description: Cas-Br-M (murine) ecotropic retroviral transforming sequence

Omim ID: [165360](#)

Gene Ontology: [Hyperlink](#)

Gene Summary: The cbl oncogene was first identified as part of a transforming retrovirus which induces mouse pre-B and pro-B cell lymphomas. As an adaptor protein for receptor protein-tyrosine kinases, it positively regulates receptor protein-tyrosine kinase ubiquitination in a manner dependent upon its variant SH2 and RING finger domains. Ubiquitination of receptor protein-tyrosine kinases terminates signaling by marking active receptors for degradation. [provided by RefSeq]

Other Designations: oncogene CBL2

Gene Pathway

[Chronic myeloid leukemia](#) [Endocytosis](#) [ErbB signaling pathway](#) [Insulin signaling pathway](#) [Jak-STAT signaling pathway](#) [Pathways in cancer](#) [T cell receptor signaling pathway](#) [Ubiquitin mediated proteolysis](#)

Related Disease

[Diabetes Mellitus, Type 2](#) [Disease Progression](#) [Genetic Predisposition to Disease](#) [Leukemia, Myelomonocytic, Chronic](#) [Tobacco Use Disorder](#)