



SZABO SCANDIC

Part of Europa Biosite

Produktinformation



Forschungsprodukte & Biochemikalien



Zellkultur & Verbrauchsmaterial



Diagnostik & molekulare Diagnostik



Laborgeräte & Service

Weitere Information auf den folgenden Seiten!
See the following pages for more information!



Lieferung & Zahlungsart

siehe unsere [Liefer- und Versandbedingungen](#)

Zuschläge

- Mindermengenzuschlag
- Trockeneiszuschlag
- Gefahrgutzuschlag
- Expressversand

SZABO-SCANDIC HandelsgmbH

Quellenstraße 110, A-1100 Wien

T. +43(0)1 489 3961-0

F. +43(0)1 489 3961-7

mail@szabo-scandic.com

www.szabo-scandic.com

[linkedin.com/company/szaboscandic](https://www.linkedin.com/company/szaboscandic)

CBL monoclonal antibody (M01A), clone 6D12

Catalog # : H00000867-M01A

規格 : [200 uL]

[List All](#)

Specification

Product Description: Mouse monoclonal antibody raised against a partial recombinant CBL.

Immunogen: CBL (NP_005179, 736 a.a. ~ 835 a.a) partial recombinant protein with GST tag. MW of the GST tag alone is 26 KDa.

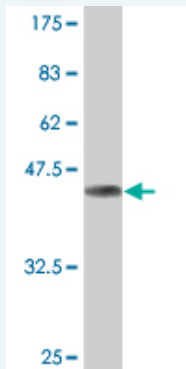
Sequence: NIQSQAPSITESSTFGEGNLAHAHANTGPEESENEDDGYDVPKPPVPAVL
ARRTLSDISNASSSFGWLSLDGDPTTNVTEGSQVPERPPKPFRRINSE
R

Host: Mouse

Reactivity: Human

Isotype: IgG1 Kappa

Quality Control Testing: Antibody Reactive Against Recombinant Protein.



Western Blot detection against Immunogen (36.74 KDa) .

Storage Buffer: In ascites fluid

Storage Instruction: Store at -20°C or lower. Aliquot to avoid repeated freezing and thawing.

MSDS: [Download](#)

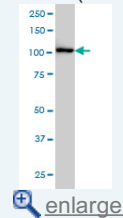
Datasheet: [Download](#)

Applications

Western Blot (Cell lysate)

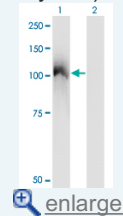
Application Image

Western Blot (Cell lysate)



[enlarge](#)

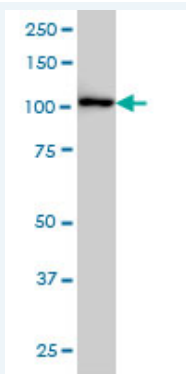
Western Blot (Transfected lysate)



[enlarge](#)

Western Blot (Recombinant protein)

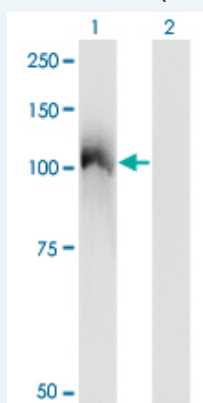
ELISA



CBL monoclonal antibody (M01A), clone 6D12 Western Blot analysis of CBL expression in K-562 (Cat # L009V1).

 [Protocol Download](#)

Western Blot (Transfected lysate)



Western Blot analysis of CBL expression in transfected 293T cell line by CBL monoclonal antibody (M01A), clone 6D12.

Lane 1: CBL transfected lysate (Predicted MW: 99.6 KDa).

Lane 2: Non-transfected lysate.

 [Protocol Download](#)

Western Blot (Recombinant protein)

 [Protocol Download](#)

ELISA

Gene Information

Entrez GeneID: [867](#)

GeneBank [NM_005188](#)
Accession#:

Protein [NP_005179](#)
Accession#:

Gene Name: CBL

Gene Alias: C-CBL,CBL2,RNF55

Gene Description: Cas-Br-M (murine) ecotropic retroviral transforming sequence

Omim ID: [165360](#)

Gene Ontology: [Hyperlink](#)

Gene Summary: The cbl oncogene was first identified as part of a transforming retrovirus which induces mouse pre-B and pro-B cell lymphomas. As an adaptor

protein for receptor protein-tyrosine kinases, it positively regulates receptor protein-tyrosine kinase ubiquitination in a manner dependent upon its variant SH2 and RING finger domains. Ubiquitination of receptor protein-tyrosine kinases terminates signaling by marking active receptors for degradation. [provided by RefSeq]

Other oncogene CBL2

Designations:

Gene Pathway

[Chronic myeloid leukemia](#) [Endocytosis](#) [ErbB signaling pathway](#) [Insulin signaling pathway](#) [Jak-STAT signaling pathway](#) [Pathways in cancer](#) [T cell receptor signaling pathway](#) [Ubiquitin mediated proteolysis](#)

Related Disease

[Diabetes Mellitus, Type 2](#) [Disease Progression](#) [Genetic Predisposition to Disease](#) [Leukemia, Myelomonocytic](#) [Chronic Tobacco Use Disorder](#)

[服務條款](#) | [隱私權政策](#) | [著作及商標](#) | [網站地圖](#)

©2020 亞諾法生技股份有限公司 Abnova Corporation. 版權所有.