



# SZABO SCANDIC

Part of Europa Biosite

## Produktinformation



Forschungsprodukte & Biochemikalien



Zellkultur & Verbrauchsmaterial



Diagnostik & molekulare Diagnostik



Laborgeräte & Service

Weitere Information auf den folgenden Seiten!  
See the following pages for more information!



### Lieferung & Zahlungsart

siehe unsere [Liefer- und Versandbedingungen](#)

### Zuschläge

- Mindermengenzuschlag
- Trockeneiszuschlag
- Gefahrgutzuschlag
- Expressversand

### SZABO-SCANDIC HandelsgmbH

Quellenstraße 110, A-1100 Wien

T. +43(0)1 489 3961-0

F. +43(0)1 489 3961-7

[mail@szabo-scandic.com](mailto:mail@szabo-scandic.com)

[www.szabo-scandic.com](http://www.szabo-scandic.com)

[linkedin.com/company/szaboscandic](https://www.linkedin.com/company/szaboscandic) 

## SERPINH1 monoclonal antibody (M01), clone 1D2-1A6

Catalog # : H00000871-M01

規格 : [ 100 ug ]

List All

### Specification

**Product Description:** Mouse monoclonal antibody raised against a full length recombinant SERPINH1.

**Immunogen:** SERPINH1 (AAH14623.1, 1 a.a. ~ 418 a.a) full-length recombinant protein with GST tag. MW of the GST tag alone is 26 KDa.

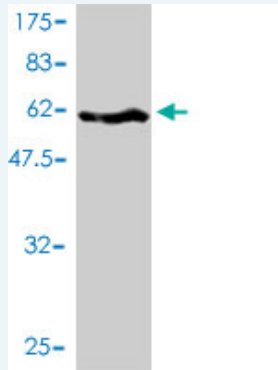
**Sequence:** MRSLLLLSAFCLLEAALAAEVKPKAAAAAPGTAEKLSPKAATLAERSAGL  
AFSLYQAMAKDQAVENILVSPVWVASSLGLVSLGGKATTASQAKAVLSAE  
QLRDEEVHAGLGELLRSLSNSTARNTWKLGSRLYGPSSVSFADDFVR  
SSKQHYNCEHSKINFRDKRSALQSINEWAAQTTDGKLPVETKDVETDGL  
ALLVNAMFFKPHWDEKFHHKMVDNRGFMVTRSYTVGVMMMHRTGLYN  
YYDDEKEKLQIVEMPLAHLKSSLILMPHIVEPLERLEKLLTKEQLKIWMGK  
MQKKAVAIISLPKGVVEVTHDLQKHLAAGLGLTEAIDKNKADLSRMSGKDL  
YLASVFHATAFELDTDGNPFDQDIYGREELRSPKLFYADHPFIFLVRDTQ  
SGSLLFIGRLVVRPKGDKMRDEL

**Host:** Mouse

**Reactivity:** Human, Rat

**Isotype:** IgG1 kappa

**Quality Control Testing:** Antibody Reactive Against Recombinant Protein.



Western Blot detection against Immunogen (71.72 KDa) .

**Storage Buffer:** In 1x PBS, pH 7.4

**Storage Instruction:** Store at -20°C or lower. Aliquot to avoid repeated freezing and thawing.

**MSDS:** [Download](#)

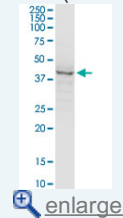
**Datasheet:** [Download](#)

### Applications

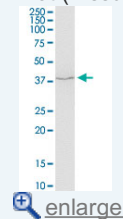
Western Blot (Tissue lysate)

### Application Image

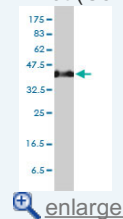
Western Blot (Tissue lysate)



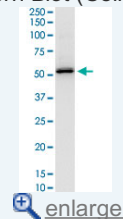
Western Blot (Tissue lysate)



Western Blot (Cell lysate)

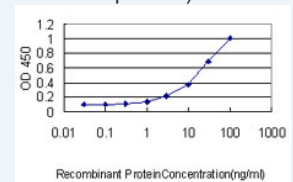


Western Blot (Cell lysate)



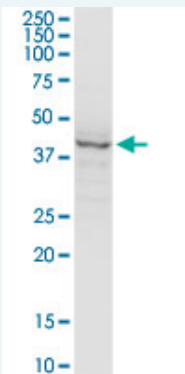
Western Blot (Recombinant protein)

Sandwich ELISA (Recombinant protein)



[enlarge](#)

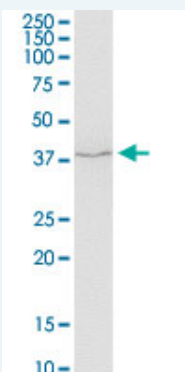
ELISA



SERPINH1 monoclonal antibody (M01), clone S2. Western Blot analysis of SERPINH1 expression in human pancreas.

 [Protocol Download](#)

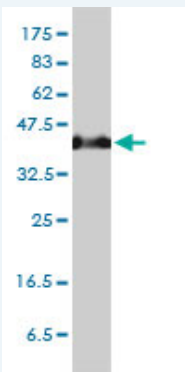
#### Western Blot (Tissue lysate)



SERPINH1 monoclonal antibody (M01), clone S2. Western Blot analysis of SERPINH1 expression in rat brain.

 [Protocol Download](#)

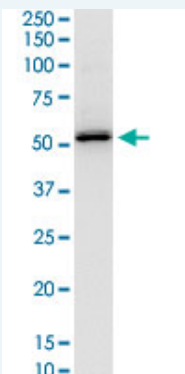
#### Western Blot (Cell lysate)



SERPINH1 monoclonal antibody (M01), clone S2 Western Blot analysis of SERPINH1 expression in HeLa ( Cat # L013V1 ).

 [Protocol Download](#)

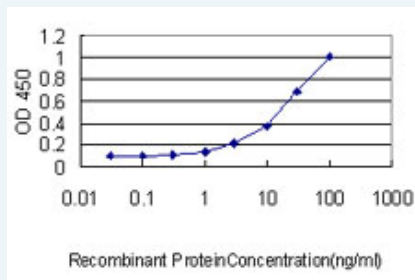
#### Western Blot (Cell lysate)



SERPINH1 monoclonal antibody (M01), clone S2. Western Blot analysis of SERPINH1 expression in MCF-7.

**Western Blot (Recombinant protein)**

**Sandwich ELISA (Recombinant protein)**



Detection limit for recombinant GST tagged SERPINH1 is approximately 0.1ng/ml as a capture antibody.

**ELISA**

**Gene Information**

**Entrez GeneID:** [871](#)

**GeneBank** [BC014623](#)  
**Accession#:**

**Protein** [AAH14623.1](#)  
**Accession#:**

**Gene Name:** SERPINH1

**Gene Alias:** AsTP3,CBP1,CBP2,HSP47,PIG14,PPROM,RA-A47,SERPINH2,gp46

**Gene Description:** serpin peptidase inhibitor, clade H (heat shock protein 47), member 1, (collagen binding protein 1)

**Omim ID:** [600943](#), [610504](#)

**Gene Ontology:** [Hyperlink](#)

**Gene Summary:** This gene encodes a member of the serpin superfamily of serine proteinase inhibitors. Its expression is induced by heat shock. The protein localizes to the endoplasmic reticulum lumen and binds collagen; thus it is thought to be a molecular chaperone involved in the maturation of collagen molecules. Autoantibodies to this protein have been found in patients with rheumatoid arthritis. [provided by RefSeq]

**Other Designations:** arsenic-transactivated protein 3,colligin-1,colligin-2,proliferation-inducing gene 14,rheumatoid arthritis antigen A-47,serine (or cysteine) proteinase inhibitor, clade H (heat shock protein 47), member 1, (collagen binding protein 1),serine (or cysteine)

**Related Disease**

[Birth Weight](#) [Connective Tissue Diseases](#) [Fetal Diseases](#)  
[Fetal Membranes](#), [Premature Rupture](#) [Genetic Predisposition to Disease](#) [Infection](#)  
[Inflammation](#) [Musculoskeletal Diseases](#) [Pregnancy Complications](#), [Hematologic](#)  
[Premature Birth](#) [Skin Diseases](#)

