



SZABO SCANDIC

Part of Europa Biosite

Produktinformation



Forschungsprodukte & Biochemikalien



Zellkultur & Verbrauchsmaterial



Diagnostik & molekulare Diagnostik



Laborgeräte & Service

Weitere Information auf den folgenden Seiten!
See the following pages for more information!



Lieferung & Zahlungsart

siehe unsere [Liefer- und Versandbedingungen](#)

Zuschläge

- Mindermengenzuschlag
- Trockeneiszuschlag
- Gefahrgutzuschlag
- Expressversand

SZABO-SCANDIC HandelsgmbH

Quellenstraße 110, A-1100 Wien

T. +43(0)1 489 3961-0

F. +43(0)1 489 3961-7

mail@szabo-scandic.com

www.szabo-scandic.com

[linkedin.com/company/szaboscandic](https://www.linkedin.com/company/szaboscandic) 

SERPINH1 293T Cell Transient Overexpression Lysate(Denatured)

Catalog # : H00000871-T01

規格 : [100 uL]

[List All](#)

Specification

Transfected Cell Line: 293T

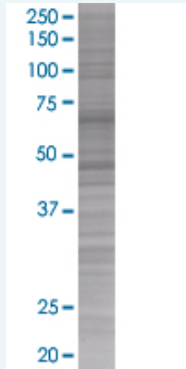
Plasmid: pCMV-SERPINH1 full-length

Host: Human

Theoretical MW (kDa): 46.4

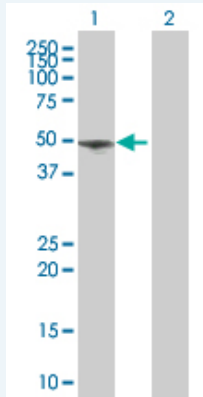
Quality Control Testing: Transient overexpression cell lysate was tested with Anti-SERPINH1 antibody (H00000871-B01) by Western Blots.

SDS-PAGE Gel



SERPINH1 transfected lysate

Western Blot



Lane 1: SERPINH1 transfected lysate (46.4 KDa).

Lane 2: Non-transfected lysate.

Storage Buffer: 1X Sample Buffer (50 mM Tris-HCl, 2% SDS, 10% glycerol, 300 mM 2-mercaptoethanol, 0.01% Bromophenol blue)

Storage Instruction: Store at -80°C. Aliquot to avoid repeated freezing and thawing.

MSDS:  [Download](#)

Applications

Western Blot

Gene Information

Entrez GeneID: [871](#)

GeneBank [NM_001235](#)
Accession#:

Protein [NP_001226](#)
Accession#:

Gene Name: SERPINH1

Gene Alias: AsTP3,CBP1,CBP2,HSP47,PIG14,PPROM,RA-A47,SERPINH2,gp46

Gene Description: serpin peptidase inhibitor, clade H (heat shock protein 47), member 1, (collagen binding protein 1)

Omim ID: [600943](#), [610504](#)

Gene Ontology: [Hyperlink](#)

Gene Summary: This gene encodes a member of the serpin superfamily of serine proteinase inhibitors. Its expression is induced by heat shock. The protein localizes to the endoplasmic reticulum lumen and binds collagen; thus it is thought to be a molecular chaperone involved in the maturation of collagen molecules. Autoantibodies to this protein have been found in patients with rheumatoid arthritis. [provided by RefSeq]

Other Designations: arsenic-transactivated protein 3,colligin-1,colligin-2,proliferation-inducing gene 14,rheumatoid arthritis antigen A-47,serine (or cysteine) proteinase inhibitor, clade H (heat shock protein 47), member 1, (collagen binding protein 1),serine (or cysteine)

Related Disease

[Birth Weight](#) [Connective Tissue Diseases](#) [Fetal Diseases](#)
[Fetal Membranes](#), [Premature Rupture](#) [Genetic Predisposition to Disease](#) [Infection](#)
[Inflammation](#) [Musculoskeletal Diseases](#) [Pregnancy Complications](#), [Hematologic](#)
[Premature Birth](#) [Skin Diseases](#)

[服務條款](#) | [隱私權政策](#) | [著作及商標](#) | [網站地圖](#)

©2016 亞諾法生技股份有限公司 Abnova Corporation. 版權所有.